

## PARTICOLARI IN METALLO E MATERIALI SPECIALI



Via Don Sibilloni , 20A - 43040 Felegara (PR) - Italy

Tel. e Fax +39.0525.432088

<http://www.tecnogor.it> e-mail: [info@tecnogor.it](mailto:info@tecnogor.it)

REV. 01

**SOMMARIO**

<b>Parte I.....</b>	<b>4</b>
C007 - MARTINETTO PNEUMATICO .....	5
C008 - COMPLESSIVO PINZA .....	6
C009 - COMANDO-APERTURA.....	7
C010 - RUBINETTO .....	8
C011 - FALSA BOTTIGLIA.....	9
C032 - RULLO MARTINETTO.....	10
C047 - SUPPORTO COCLEA FOLLE .....	11
M1018 - PROFILO .....	12
<b>Parte II.....</b>	<b>15</b>
C026 - RUBINETTO .....	16
C069 - SUPPORTO E PINZA .....	17
M155 - SUPPORTO.....	18
M156 - PINZA .....	18
M156-1 - PINZA.....	19
M156-2 - RECUPERO PARTICOLARE FORCELLA .....	19
M552-1 - PINZA.....	20
M552-2 - PINZA.....	20
M593 - TUBO DI RITORNO ARIA .....	21
M594 - CONO PER VALVOLA .....	21
M596 - CANULA DI RIEMPIMENTO .....	22
M597 - MOLLA .....	22
M598 - GUARNIZIONE.....	23
M771 - CANNUCCIA .....	23
M830 - MOLLA .....	24
M887 - PROFILO .....	24
M888 - PROFILO .....	25
M898-2 - SETTORE.....	25
M959 - SOFFIETTO.....	26
M973 - TENUTA .....	26
M974 - STELLA .....	27
M975 - STELLA .....	27
M982 - PROFILO .....	28
M983 - PROFILO .....	28
M1022 - OTTURATORE .....	29
M1023 - STELLA .....	29
M1058 - TENUTA .....	30
M1064 - PERNO.....	30
M1119 - LEVA .....	31
M1120 - GUIDA .....	31
M1197 - MANTICE .....	32
M1227 - MANTICE .....	32
M1238 - RULLO.....	33
M1249 - PIATTELLO .....	33
M1322 - PINZA .....	34
M1362 - STELLA .....	34
M1370 - PARTICOLARE TAPPATORE.....	35
M1377 - GUARNIZIONE.....	35
M1385 - GUARNIZIONE.....	36
M1407 - PINZA .....	36
MARTINETTO .....	37
M1407-1 - PINZA.....	39
M1408 - VITE.....	39
M1408-1 - VITE .....	40
M1430 - UGELLO.....	40
M1434 - SUPPORTO.....	41
M2011 - PINZA SOFFIATRICE .....	41
M2012 - PINZA SOFFIATRICE .....	42
<b>Parte III.....</b>	<b>43</b>
C058 - TRASMISSIONE .....	44
M576 - GUIDA .....	45
M1189 - MOZZO (ORIGINALE).....	45
M1189-1 - MOZZO (MODIFICATO).....	46
M1190 - RUOTA DENTATA .....	46
M1190-1 - RUOTA DENTATA .....	47
M1191 - RUOTA DENTATA .....	47

M1191-1 - RUOTA DENTATA .....	48
M1193 - MOZZO .....	48
M1194 - ALBERO .....	49
<b>Parte IV .....</b>	<b>50</b>
C048 - VALVOLA A TRE VIE SOFFIATRICE .....	51
C070 - VALVOLA SOFFIAGGIO VSP152122 .....	52
M475 - TENUTA .....	53
M476 - TENUTA .....	53
M477 - TAZZA .....	55
M478 - ANELLO .....	55
M479 - TAZZA .....	56
M489 - BOCCOLA .....	56
M493 - PARACOLPI .....	57
M494 - AMMORTIZZATORE .....	57
M495 - AMMORTIZZATORE .....	58
M927 - LEVA .....	58
M499 - LEVA .....	59
M501 - GUIDA ASTA .....	59
M502 - DISTANZIALE .....	60
M503 - ASTA STIRO .....	60
M538 - PUNTALE .....	61
M580 - MANINA ESPULSIONE .....	62
M581 - MANINA ESPULSIONE .....	62
M582 - MOZZO .....	63
M585 - BOCCOLA .....	63
M586 - MOLLA .....	64
M938 - BOCCOLA .....	64
M939 - BOCCOLA .....	65
SPINA .....	66
PARTICOLARI SPINA .....	67
M1188 - ASTA DI STIRO .....	68
M1462 - ASTA DI STIRO bott. 0,5 Lt .....	68
M1463 - ASTA DI STIRO bott. 1,5 Lt .....	69
SUPPORTO STAMPO .....	69
SUPPORTO STAMPO .....	70
<b>Parte V .....</b>	<b>71</b>
M151 - LAMELLA .....	72
M151-1 - LAMELLA DI PASSAGGIO .....	72
M160 - LAMELLA .....	73
M160-1 - LAMELLA .....	73
M160-2 - LAMELLA .....	74
M1117 - LAMELLA .....	74
M1118 - LAMELLA .....	75
M1437 - LAMELLA .....	75
<b>Parte VI .....</b>	<b>76</b>
C021 - SUPPORTO SPRUZZO ROTANTE .....	77
CESTELLI .....	78
C039 - SUPPORTO SPRUZZO ROTANTE .....	79
<b>Parte VII .....</b>	<b>80</b>
M1055 - RULLO .....	81
M3012-2 - MANICOTTO .....	81
M3014 - MEMBRANA .....	82
M3016 - CANOTTO ANTIFRIZIONE .....	82
M3017 - COLLARE .....	83
M3021 - MOLLA .....	83
<b>Parte VIII .....</b>	<b>84</b>
C033 - GRUPPO PINZA .....	85
C052 - PINZA SCIAQUATRICE .....	86
KIT RUBINETTO VE .....	87
STELLA DI COMANDO .....	88
M116 - LAMA .....	88
M128 - LAMA .....	89
M332 - SOFFIETTO .....	89
M418 - FALSA BOTTIGLIA .....	90
M422 - FALSA BOTTIGLIA .....	90

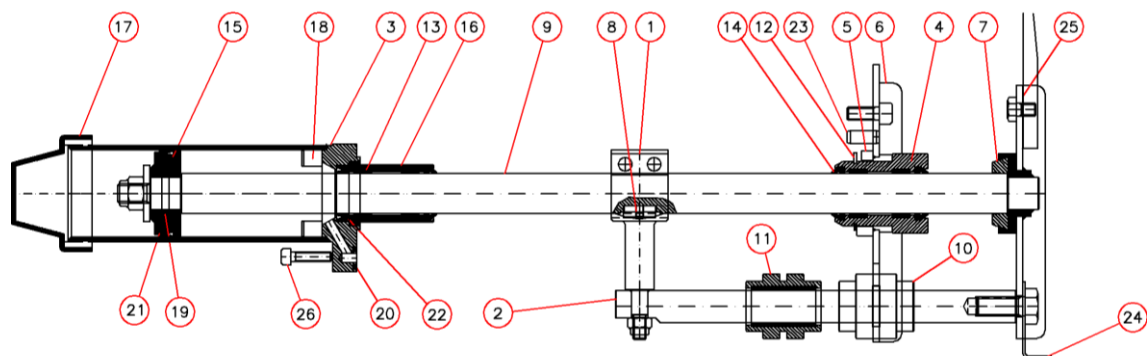
M799 - MOLLA .....	91
M922 - CUTTER .....	91
M923 - LAMA.....	92
M980 - RULLO ETICHETTATRICE .....	92
M992 - LAMA.....	93
M1025 - RULLO.....	93
M1107 - GUARNIZIONE PISTONE .....	94
M1229 - TUBO GONFIABILE PER DEPALETTIZZATORI .....	94
M1276 - UGELLO FILTRO .....	95



## Parte I

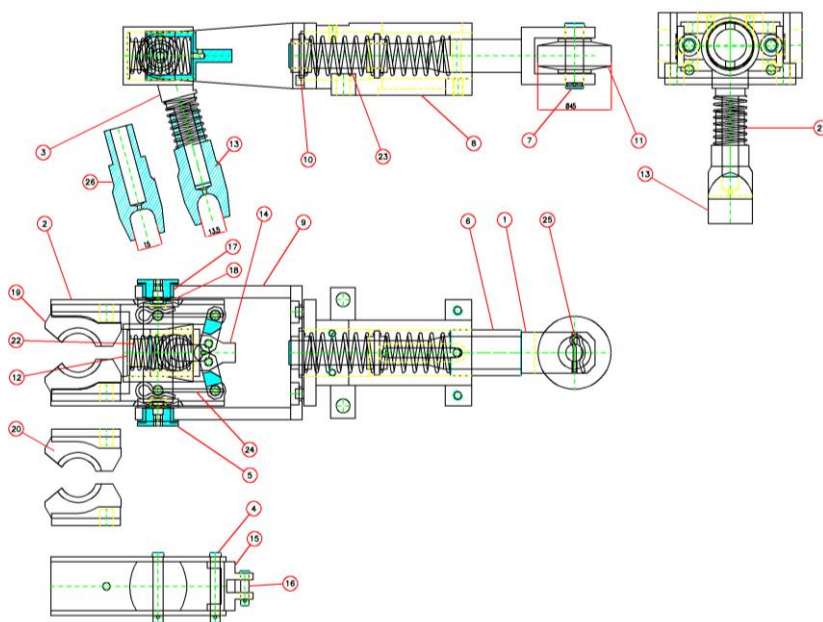


**C007 - MARTINETTO PNEUMATICO**

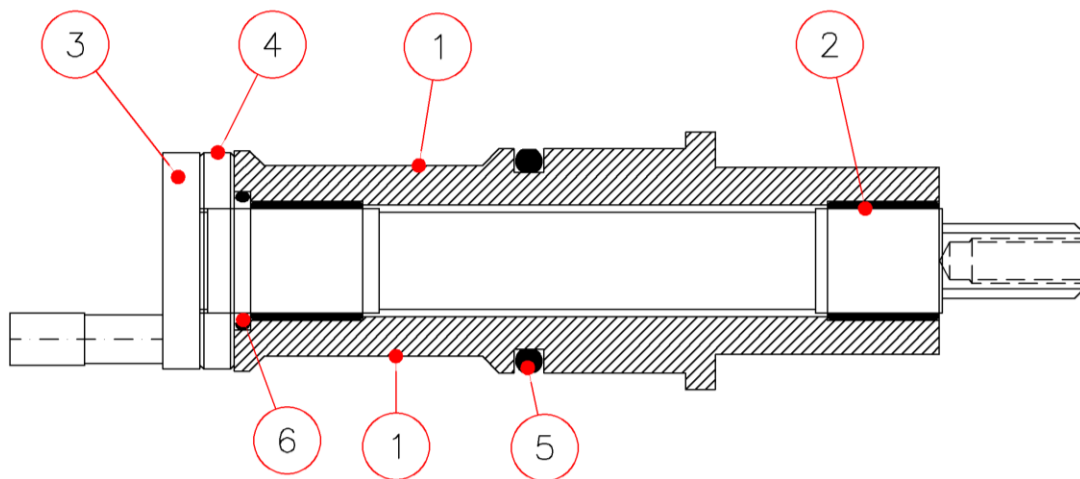


Pos.	Codice	Descrizione	qta
1	M335	SLITTA	1
2	M336	ALBERO	1
3	M337	CAMICIA	1
4	M338	BOCCOLA	1
5	M339	DISTANZIERE	1
6	M340	SUPPORTO	1
7	M341	ANELLO DI ARRESTO	1
8	M342	CHIAVETTA	1
9	M343	ALBERO CENTRALE	1
10	M344 A	BOCCOLA	1
11	M344-B	BOCCOLA	1
12	-	ANELLO	1
13	-	ANELLO	4
14	M345	ANELLO	3
15	M365	PISTONE	1
16	M366	BOCCOLA	1
17	M367	COPERCHIO	1
18	M368	ANELLO	1
19	OR	GUARNIZIONE	1
20	OR	GUARNIZIONE	1
21	-	GUARNIZIONE	1
22	-	ANELLO	1
23	M1270	PERNO	1
24	M1271	TASTATORE	1
25	M867	PIASTRINA SPESSORE LIVELLO	2
26	-	KIT BULLONERIA	1
	-	VITE T.E.	1
	-	VITE T.C.E.I.	2
	-	VITE T.E.	2
	-	VITE T.C.E.I.	2
	-	DADO AUTOBLOCCANTE	1
	-	DADO AUTOBLOCCANTE	1
	-	RONDELLA	1

**C008 - COMPLESSIVO PINZA**

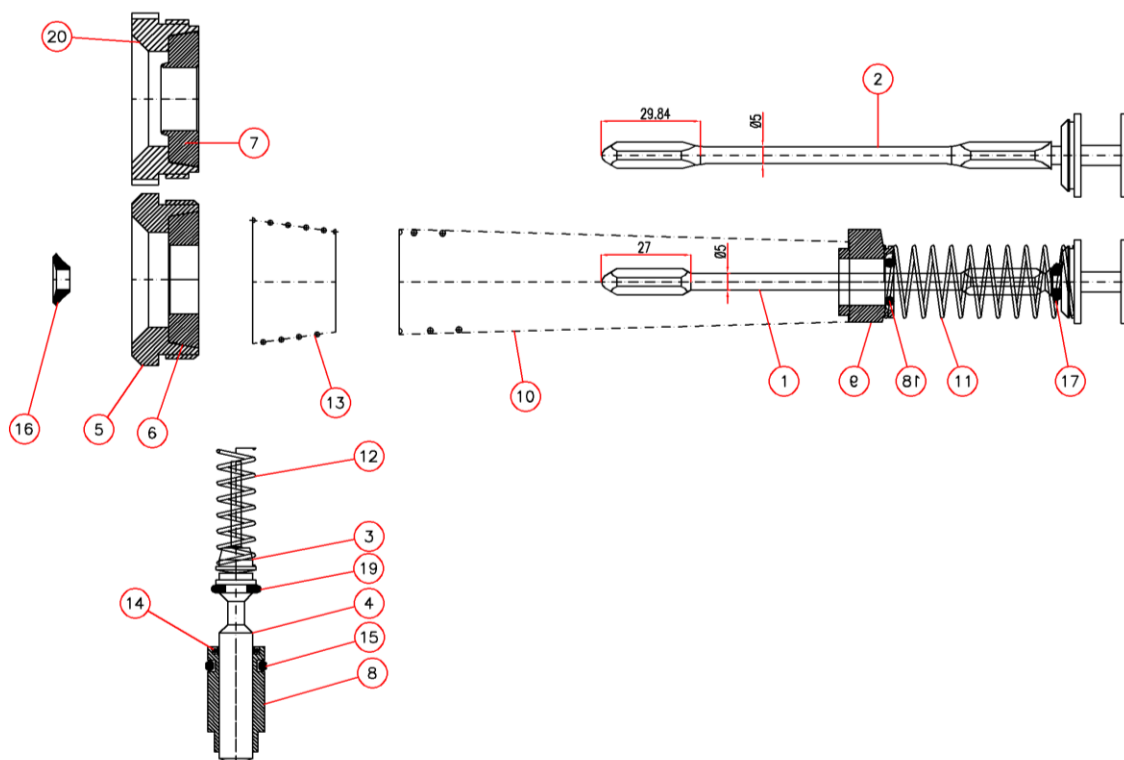


Pos.	Codice	Descrizione	qta
1	M347	CURSORE	1
2	M348	FORCELLA	2
3	M349	CORPO	1
4	M350	PERNO	4
5	M351	PERNO	2
6	M352	BOCCOLA	1
7	M353	PERNO	1
8	M354	CORPO PINZA	1
9	M355	FORCELLA	1
10	M356	BOCCOLA	2
11	M357	RULLO	1
12	M358	BOCCOLA	1
13	M359	GUIDA Ø12	1
14	M360-1	CURSORE	1
15	M361	FORCELLA	2
16	M362	PERNO	2
17	M363	BOCCOLA	2
18	M364	RONDELLA	2
19	M385	TASSELLO	2
20	M385 B	TASSELLO	2
21	M637-1	MOLLA	1
22	M674	MOLLA	1
23	M675	MOLLA	2
24	-	MOLLA	3
26	M406	GUIDA Ø15	1

**C009 - COMANDO-APERTURA**

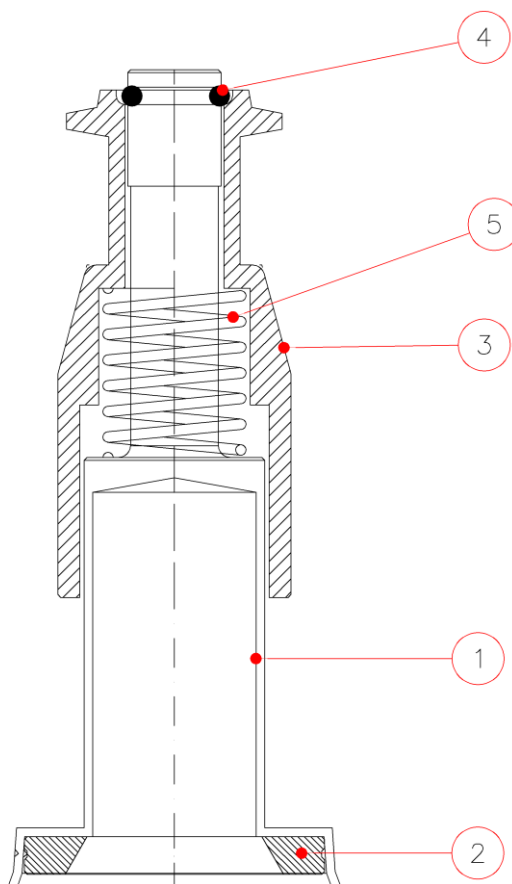
Pos.	Codice	Descrizione	qta
1	M381	CORPO	1
2	M382	CUSCINETTO A SECCO	2
3	M383	ALBERO	1
4	M384	RONDELLA	1
5	OR	GUARNIZIONE	1
6	M416 + OR	ANELLO	1

**C010 - RUBINETTO**

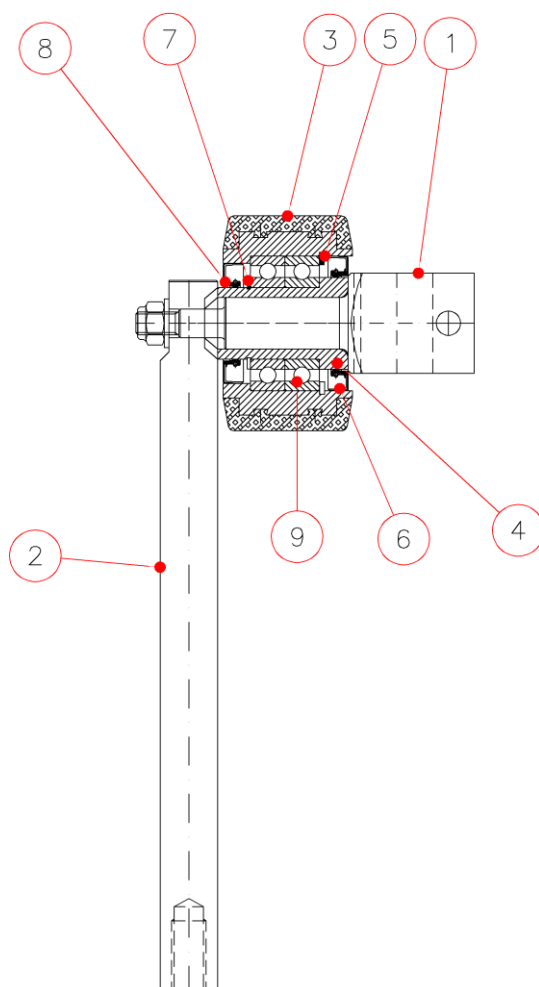


Pos.	Codice	Descrizione	qta
1	M369	STELO GAS	1
2	M369-1	STELO GAS RINFORZATO	1
3	M371	PERNO	1
4	M372	STELO VALVOLA	2
5	M373	CAMPANELLA	1
6	M374	GURNIZIONE	1
7	M287-1	IMBOCCATURA	1
8	M375	BOCCOLA	2
9	M376	PREMIMOLLA	1
10	M377	MOLLA	1
11	M378	MOLLA	1
12	M379	MOLLA	2
13	M380	MOLLA	1
14	M409	ANELLO GLYD	2
15	OR	GUARNIZIONE	2
16	M386	DEFLETTORE Ø da richiedere al cliente	1
17	M389	GUARNIZIONE	1
18	OR	GUARNIZIONE	1
19	5110-530	GUARNIZIONE	1
20	M373-1	CAMPANELLA	1



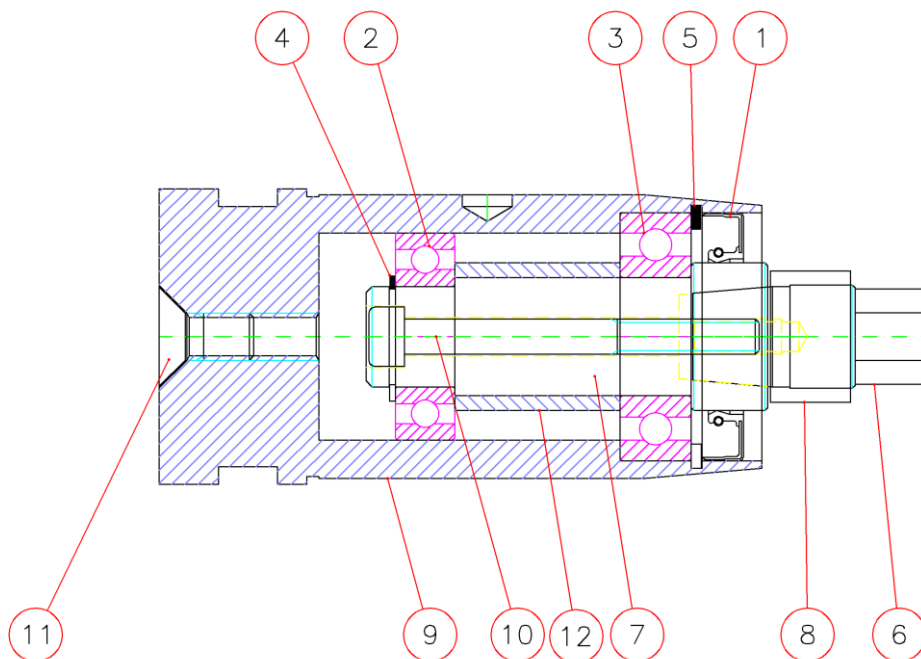
**C011 - FALSA BOTTIGLIA**

Pos.	Codice	Descrizione	qta
1	M390	FALSA BOTTIGLIA	1
2	M391	GUARNIZIONE	1
3	M392	BOCCOLA	1
4	OR	GUARNIZIONE	1
5		MOLLA	1

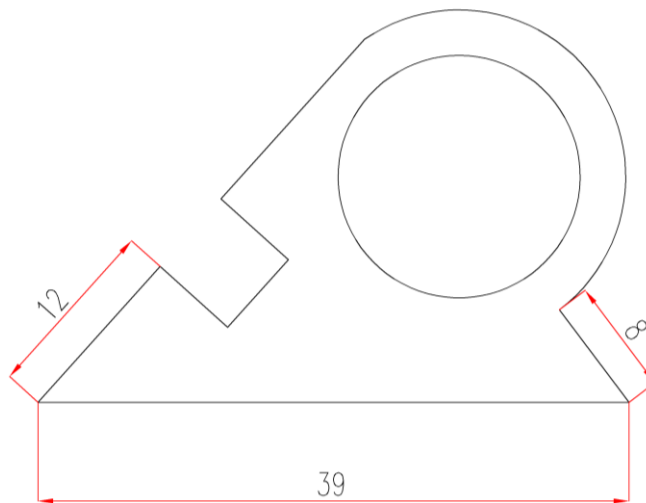
**C032 - RULLO MARTINETTO**

Pos.	Codice	Descrizione	Materiale	qta
1	M335	SLITTA	AISI 304	1
2	M336	ALBERO	AISI 304	1
3	M701	RULLO		1
4	M702	BOCCOLA	AISI 304	1
5		SEEGER	AISI 304	1
6		PARAOLIO	NBR	1
7		SEEGER	AISI 304	1
8		PARAOLIO	NBR	1
9		CUSC.		2

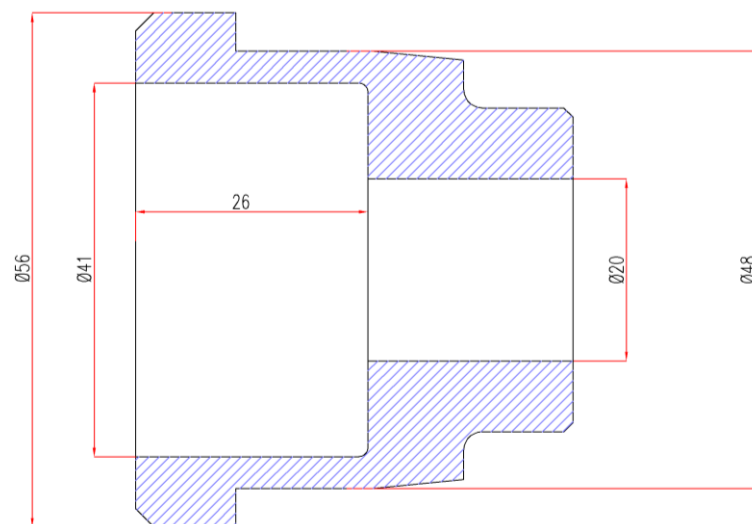


**C047 - SUPPORTO COCLEA FOLLE**

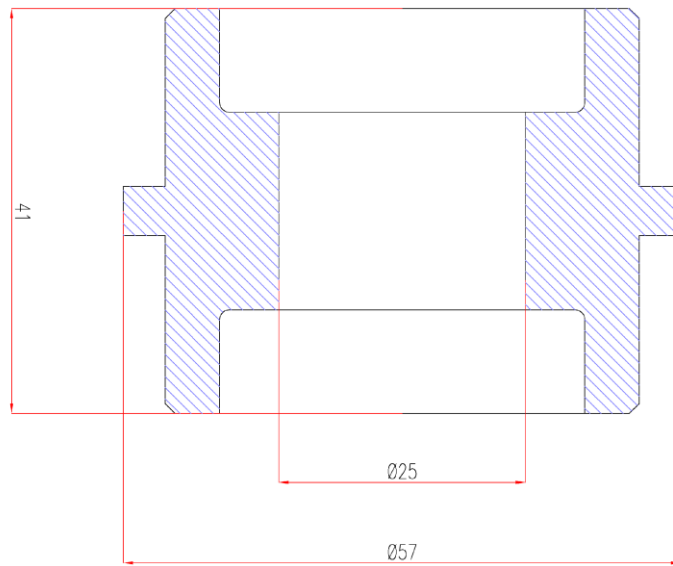
Pos.	Codice	Descrizione	qta
1	25x40x7	CORTECO	1
2	6003-2RS	CUSCINETTO	1
3	6004-2RS	CUSCINETTO	1
4	E 17	SEEGER	1
5	I 42	SEEGER	1
6	M1009	PERNETTO PRESA ESAGONALE	1
7	M1010	PERNO PRESA ESAGONALE	1
8	M1011	BOCCOLA	1
9	M1012	MANICOTTO	1
10	M6x60	VITE T.C.E.I. INOX	1
11	M8x16	VITE T.P.S.E.I. INOX	1
12	M1013	DISTANZIERE	1

**M1018 - PROFILO**

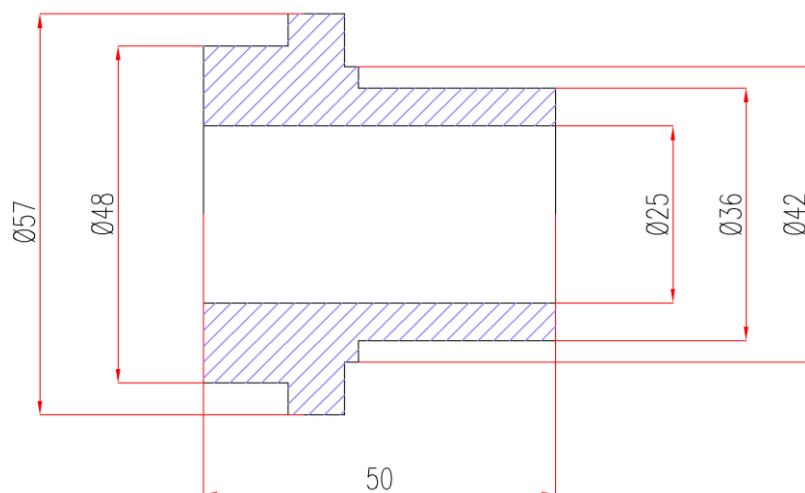
Descrizione
PROFILO PROTEZIONE

**M1345 - PISTONE**

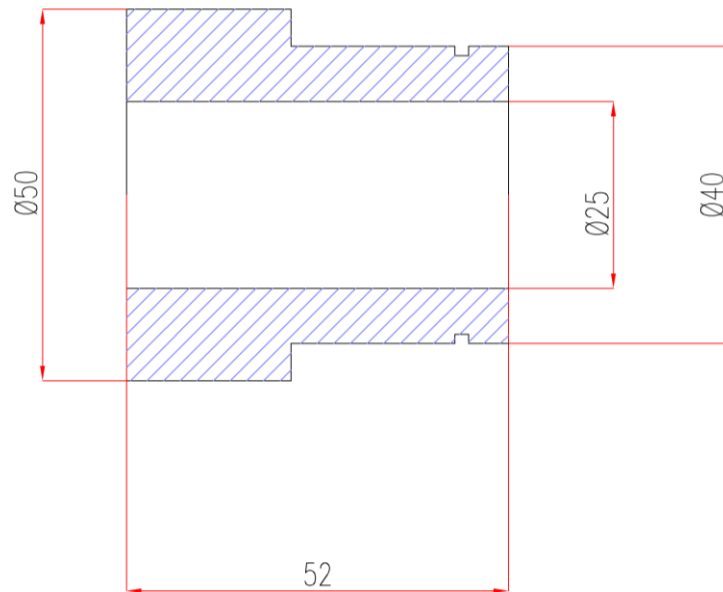
Descrizione	Materiale
PISTONE	DERLIN BIANCO

**M1346 - BOCCOLA**

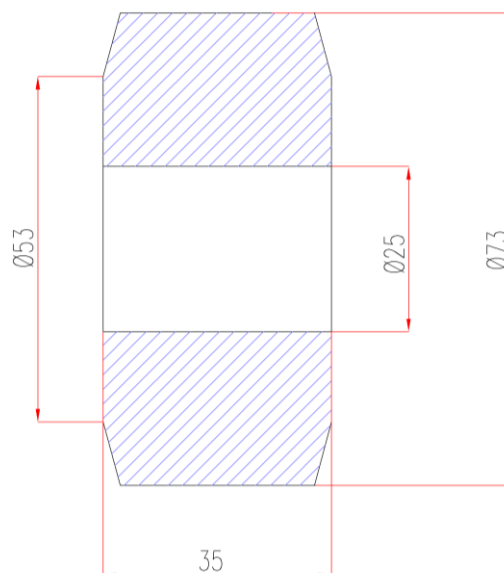
Descrizione	Materiale
BOCCOLA DI CENTRAGGIO	DERLIN BIANCO

**M1349 - BOCCOLA**

Descrizione	Materiale
BOCCOLA	TUFCOT

**M1350 - BOCCOLA**

Descrizione	Materiale
BOCCOLA	TUFCOT

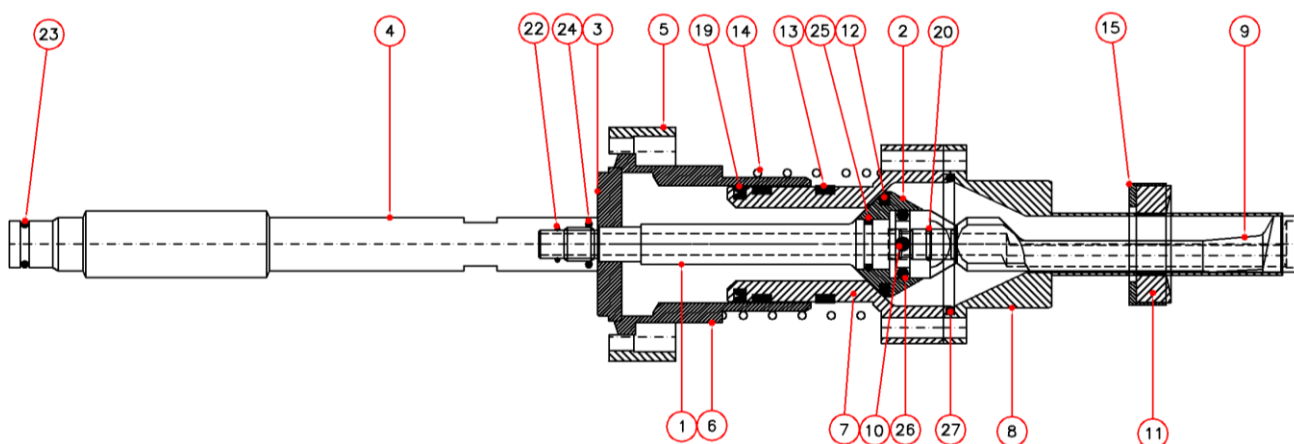
**M1351 - RULLO**

Descrizione	Materiale
RULLO	RESINA ACETALLICA

## Parte II

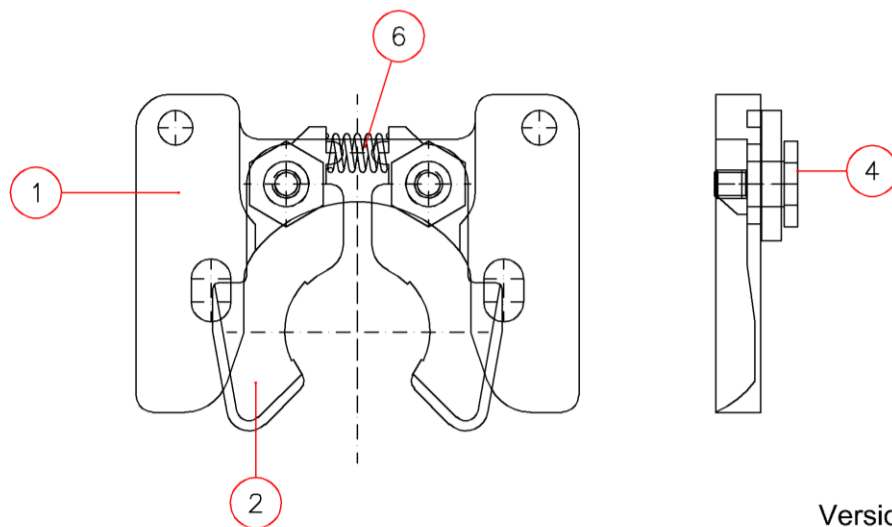


**C026 - RUBINETTO**

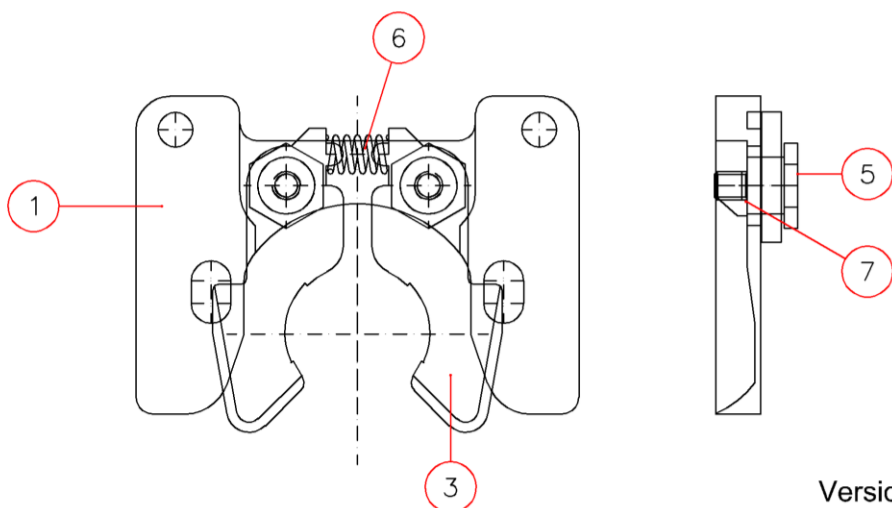


Pos.	Codice	Codice Macchina	Descrizione	Materiale	qta
1	M954	TG 1-800-78-366-0	CONO PER VALVOLA	AISI 304	1
2	M634	TG 1-324-51-203-0	BUSSOLA	AISI 304	1
3	M630	TG 8-900-03-547-2	BUSSOLA DI GUIDA	AISI 304	1
4	M633	TG 1-800-78-653-7	BARRA	AISI 304	1
5	M629	TG 1-321-51-045-1	PIASTRA DI FISSAGGIO	AISI 304	1
6	M631	TG 1-324-51-220-0	GUIDA	AISI 304	1
7	M632	TG 1-324-51-223-0	ARCO DI GUIDA	AISI 304	1
8	M596	TG 8-321-51-018-4	CANULA DI RIEMPIMENTO	AISI 304	1
9	M593	TG 8-321-51-018-5	TUBO DI RITORNO ARIA	ALLUMINIO	1
10		TG 0-406-01-800-2	SFERA Ø4 INOX	AISI 304	3
11	M599	TG 1-308-51-338-0	GOMMA DI PRESSIONE	GOMMA NERA	1
12	M598	TG 1-326-51-018-0	GUARNIZIONE	EPDM / 60 Sh	1
13		TG 1-308-51-036-0	ANELLO DI GUIDA PISTONE		2
14	M597	TG 1-099-04-566-0	MOLLA DI PRESSIONE	AISI 304	1
15	M595	TG 8-308-51-041-3	TAPPO	AISI 304	1
19		TG 0-900-02-261-6	ANELLO CON SCANALATURA		1
20		TG 0-900-02-280-7	OR		1
22		TG 0-900-02-261-5	OR		1
23		TG 0-900-02-751-1	OR		1
24		TG 0-900-02-751-1	OR		1
25		TG 0-900-04-304-4	OR		1
26		TG 0-900-06-027-1	OR		1
27		TG 0-900-06-024-6	OR		1

**C069 - SUPPORTO E PINZA**



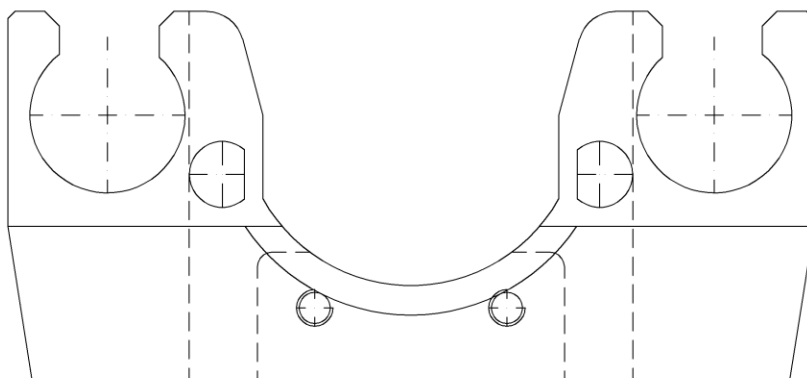
Versione Pek



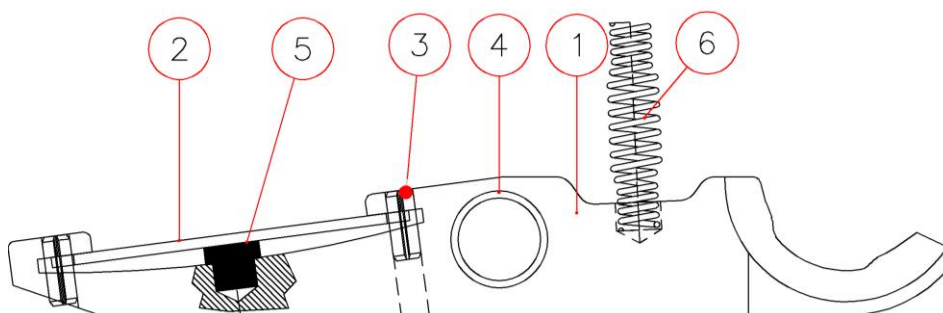
Versione Inox

Pos.	Codice	Codice Macchina	Descrizione	Materiale	qta
1	M1434	TG 0-901-31-063-5	SUPPORTO	AISI 304	1
2	M1407-1	TG 0-901-30-169-9	MORSETTO	PEEK / INOX	1
3	M1407	TG 0-901-30-172-1	MORSETTO	AISI / PEEK	1
4	M1408-1	TG 1-128-52-067-0	VITE MORSETTO	PEEK / AISI	1
5	M1408	TG 1-128-52-067-0	VITE MORSETTO	AISI / PEEK	1
6	M1465	TG 0-900-79-428-6	MOLLA DI PRESSIONE	AISI 302	1
7		TG 1-128-52-073-0	BOCCOLA		2



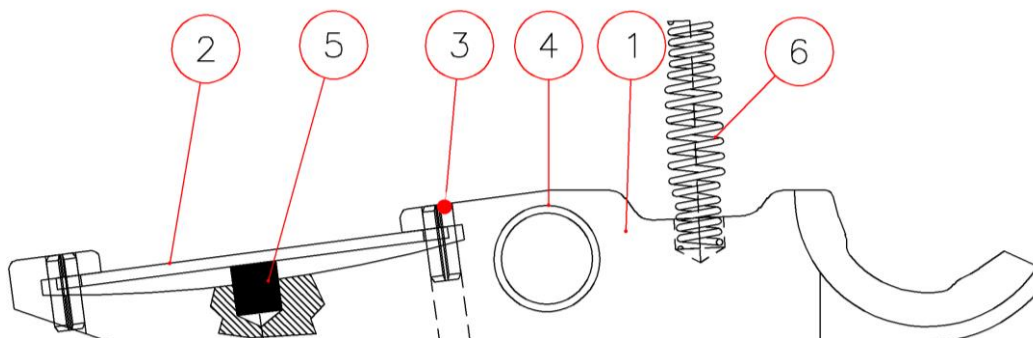
**M155 - SUPPORTO**

Pos.	Descrizione	Materiale	qta
1	SUPPORTO	AISI 304	1

**M156 - PINZA**

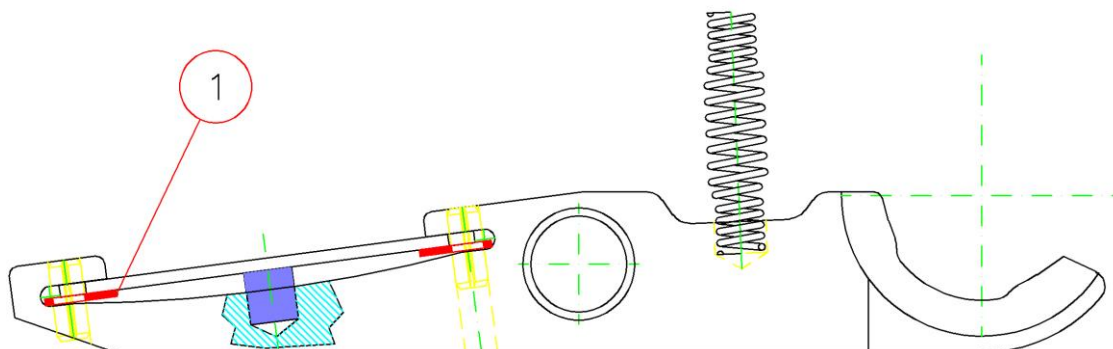
Pos.	Codice	Codice Macchina	Descrizione	Materiale	qta
1		TG 0-901-53-205-2	MORSETTO	AISI 304	1
1		TG 0-901-53-205-3	MORSETTO	AISI 304	1
2	M1450	TG 0-900-78-556-4	MOLLA A LAMINA	AISI 304	2
3		TG 0-723-81-018-2	SPINA ELASTICA	AISI 304	2
4		TG 0-129-90-006-2	BOCCOLA	PTFE	2
5	M1451		PEZZO A PRESSIONE	NBR/75 Sh	2
6	M830	TG 1-099-04-791-0	MOLLA A PRESSIONE	INOX	1

**M156-1 - PINZA**

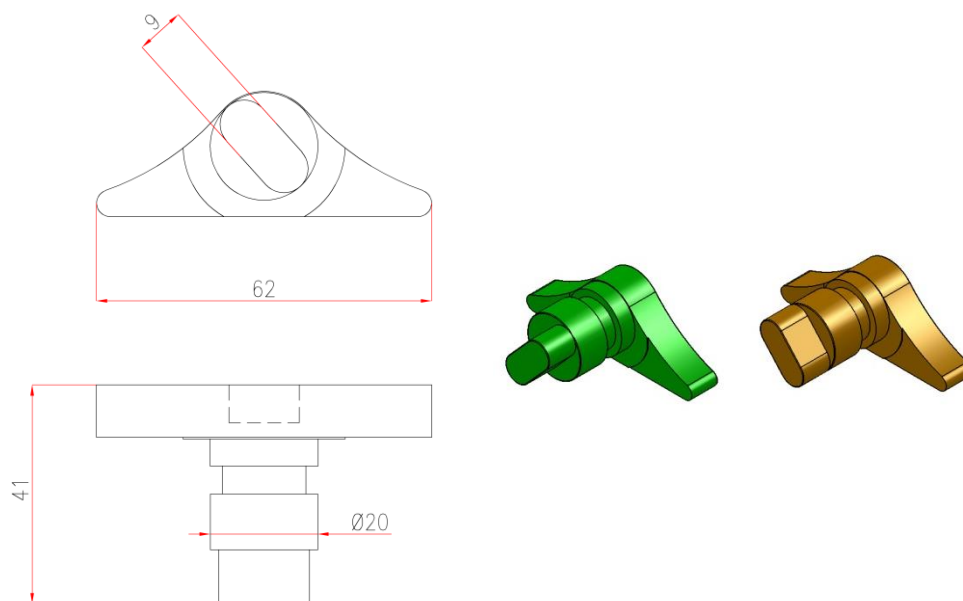


Pos.	Codice	Codice Macchina	Descrizione	Materiale	qta
1		TG 0-902-45-269-7	MORSETTO	AISI 304	1
1		TG 0-902-45-269-7	MORSETTO	AISI 304	1
2	M1450	TG 0-900-78-556-4	MOLLA A LAMINA	AISI 304	2
3		TG 0-723-81-018-2	SPINA ELASTICA	COMMERCIO	2
4		TG 0-129-90-006-2	BOCCOLA	PTFE	2
5	M1449	TG 8-070-25-222-7	PEZZO A PRESSIONE	NBR/75 Sh	2
6	M830	TG 1-099-04-791-0	MOLLA A PRESSIONE	INOX	1

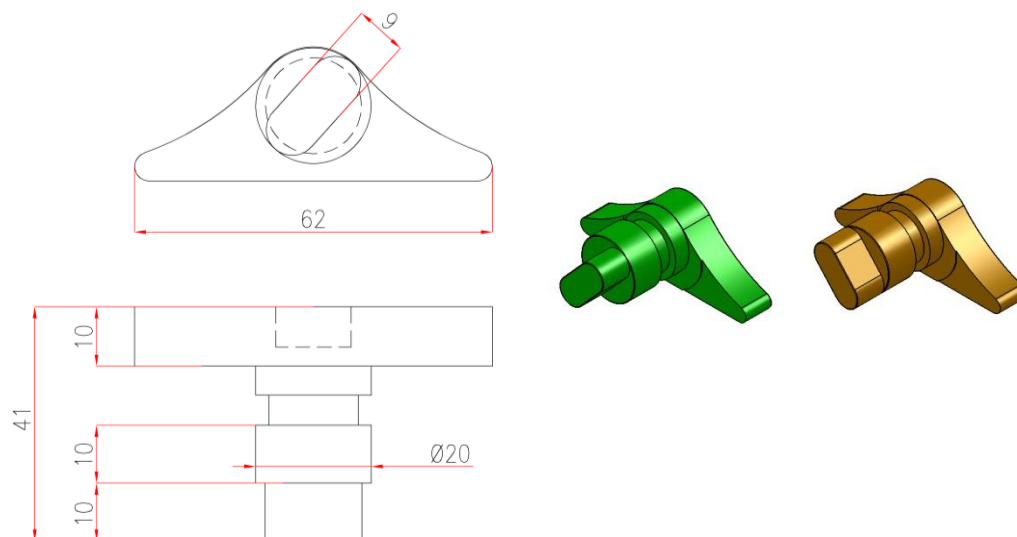
**M156-2 - RECUPERO PARTICOLARE FORCELLA**



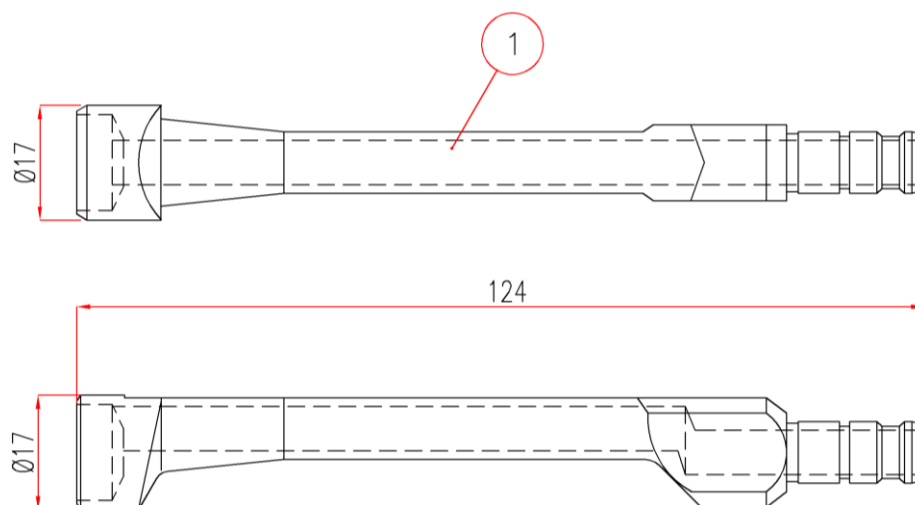
Pos.	Codice	Descrizione	Materiale	qta
1	M1461	SPESSORE	ACCIAIO TEMPRATO	2

**M552-1 - PINZA**

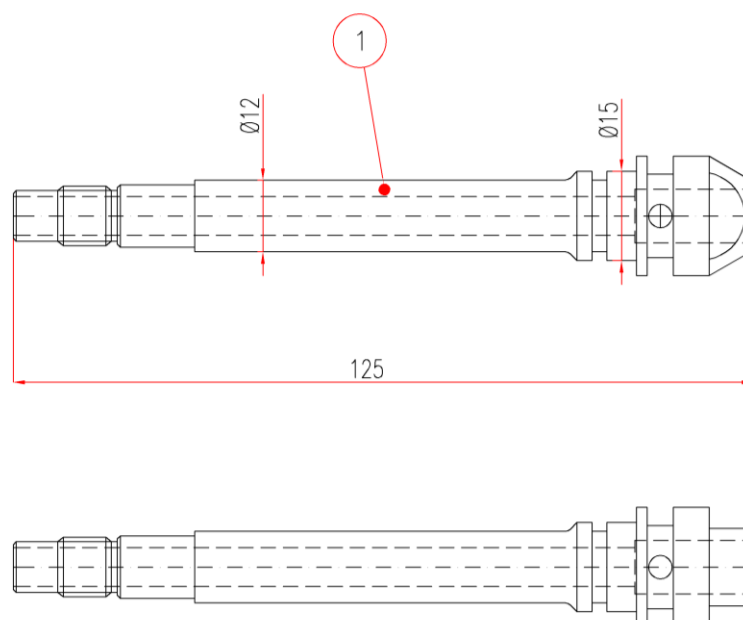
Descrizione	Codice	Materiale
ASSE PERNO STELLA SX	TG 1-070-25-076-1	PEEK

**M552-2 - PINZA**

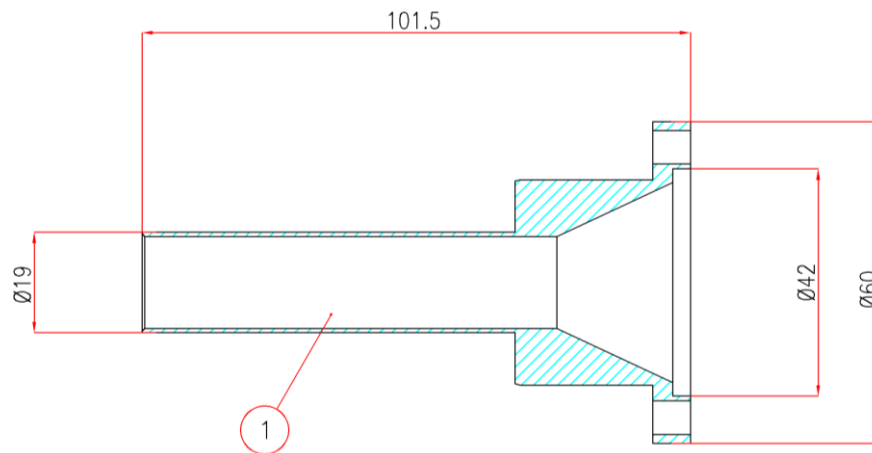
Descrizione	Codice	Materiale
ASSE PERNO STELLA DX	TG 1-070-25-077-1	PEEK

**M593 - TUBO DI RITORNO ARIA**

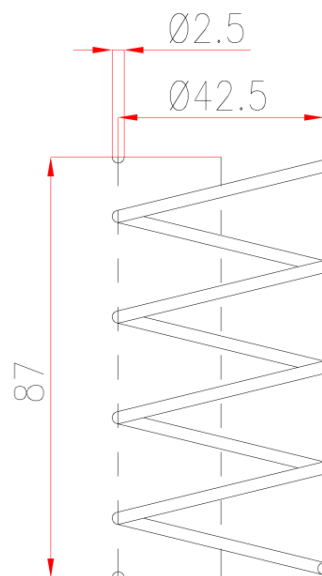
Pos	Codice	Descrizione	Materiale
1	TG 8-321-51-018-5	TUBO DI RITORNO ARIA	AISI 304

**M594 - CONO PER VALVOLA**

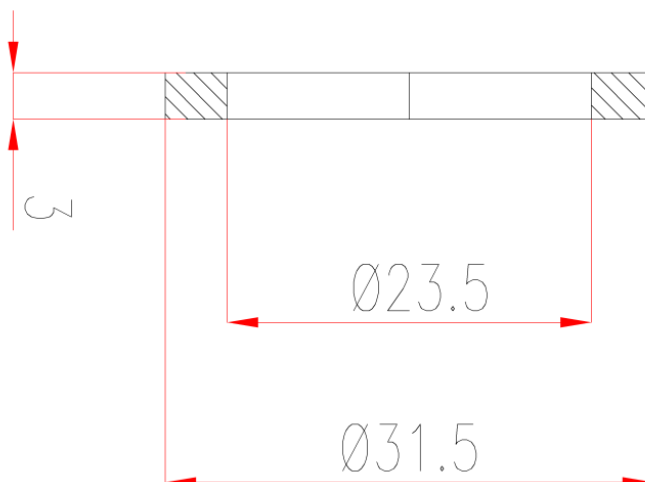
Pos.	Codice	Descrizione	Materiale
1	TG 1-800-78-366-0	CONO PER VALVOLA	AISI 304

**M596 - CANULA DI RIEMPIMENTO**

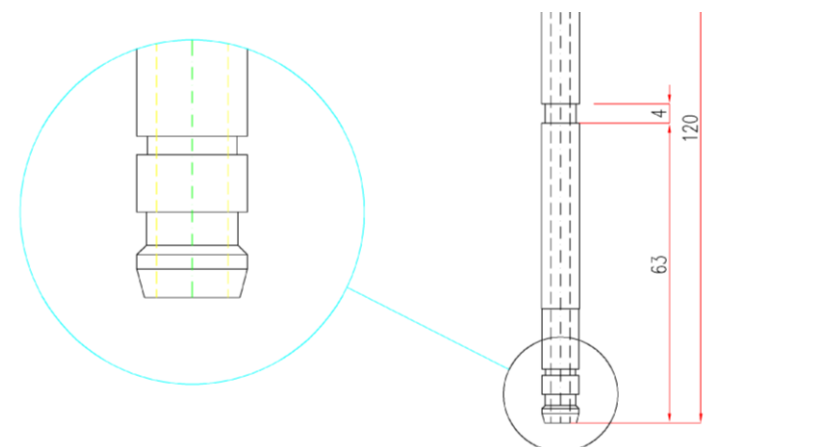
Codice	Descrizione	Materiale
TG 8-321-51-018-4	CANULA DI RIEMPIMENTO	AISI 304

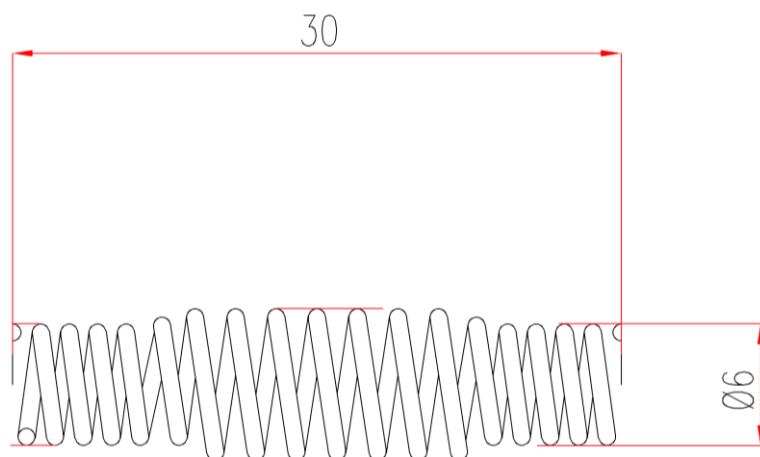
**M597 - MOLLA**

Codice	Descrizione	Materiale
TG 1-099-04-566-0	MOLLA DX TG 1-070-25-077-1	AISI 304

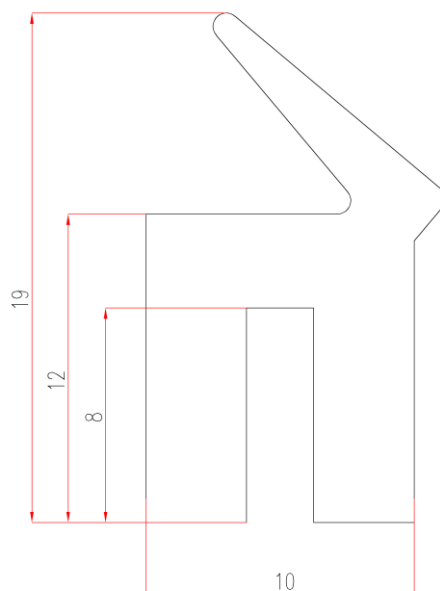
**M598 - GUARNIZIONE**

Pos.	Codice	Materiale
12	TG 1-326-51-018-0	EPDM 60 SH

**M771 - CANNUCCIA**

**M830 - MOLLA**

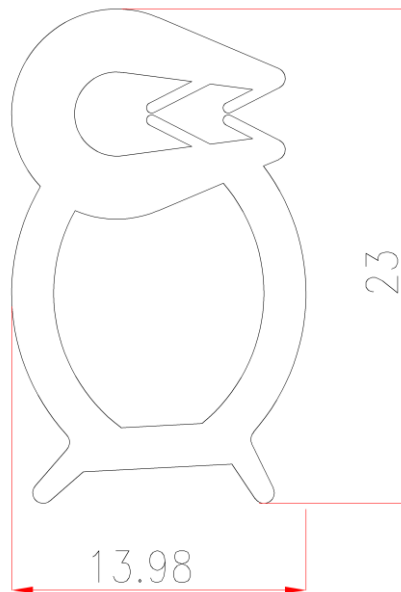
Codice	Materiale
TG 1-099-04-791-0	INOX

**M887 - PROFILO**

Descrizione
PROFILO CARTERATURA

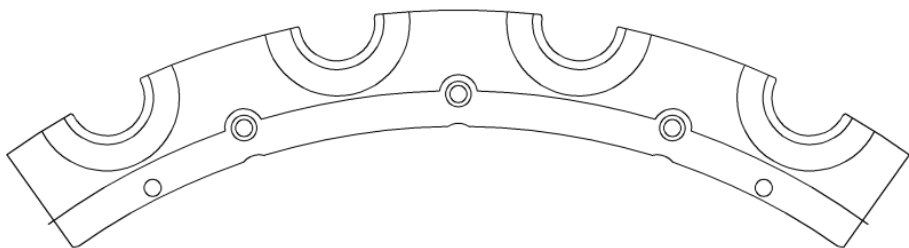


**M888 - PROFILO**

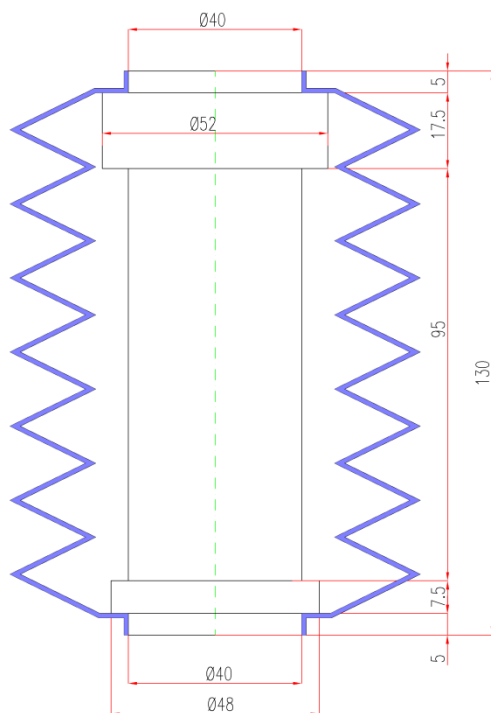
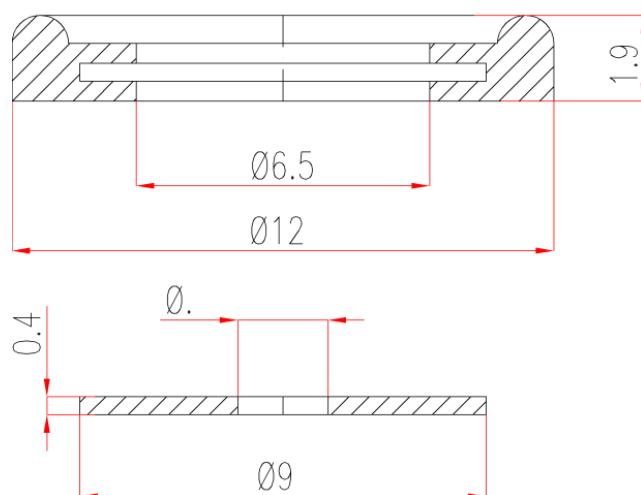


Descrizione
PROFILO CARTERATURA

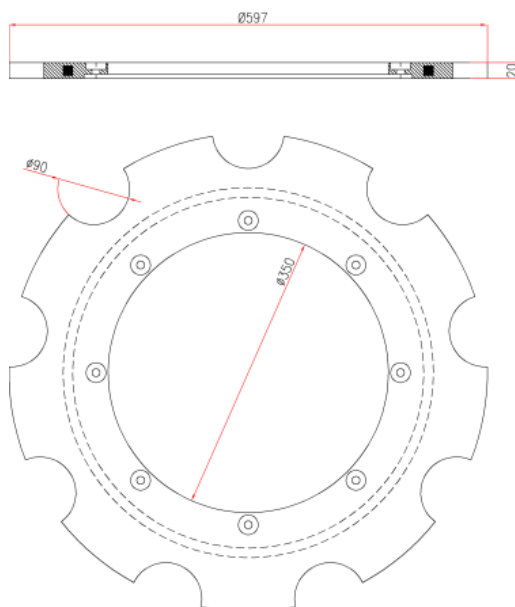
**M898-2 - SETTORE**



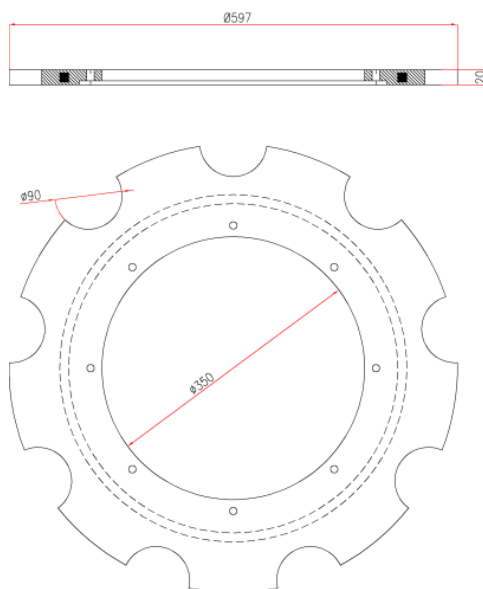
Descrizione	Codice	Materiale
SETTORE TAPPATORE	TG 0-900-57-833-5	AISI 304

**M959 - SOFFIETTO****M973 - TENUTA**

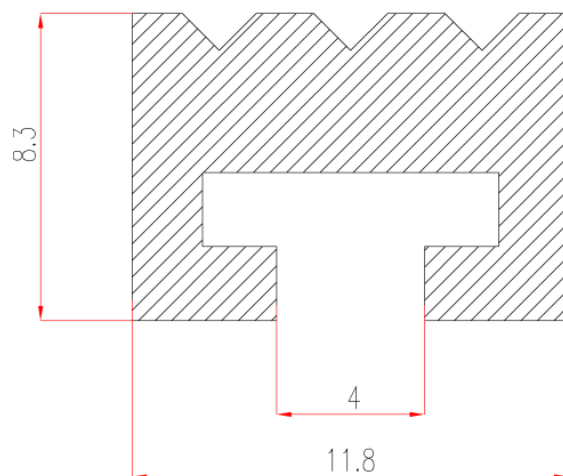
Descrizione	Codice	Materiale
TENUTA VALVOLA RUBINETTO	TG 1-124-50-307-0	EPDM PEROX 60/Sh

**M974 - STELLA**

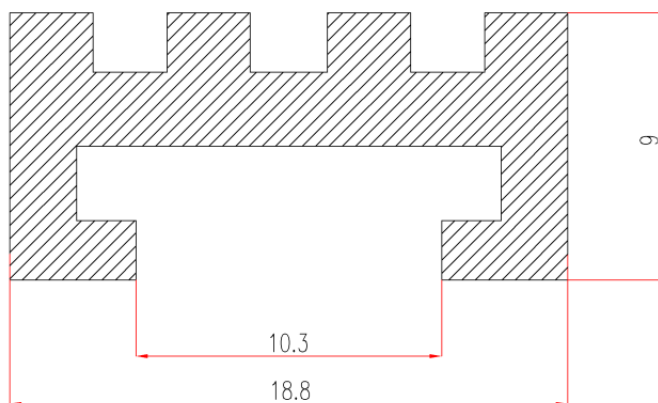
Descrizione	Codice	Materiale
STELLA ETICHETTATRICE SLEEVE	TG 793061 2.1-5	NBR NERO 85-90/Sh

**M975 - STELLA**

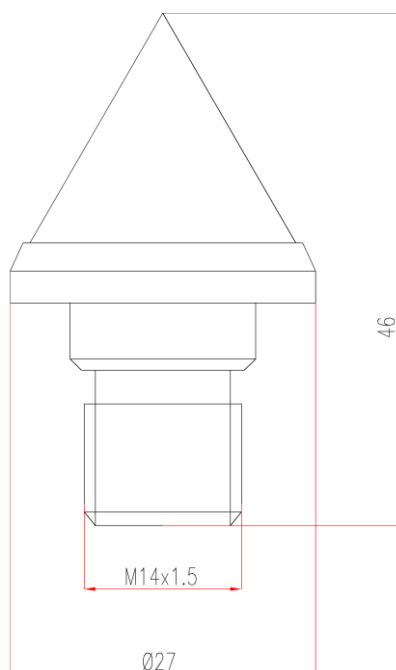
Descrizione	Codice	Materiale
STELLA ETICHETTATRICE SLEEVE	TG 793061 It 1,5	NBR NERO 90/Sh

**M982 - PROFILO**

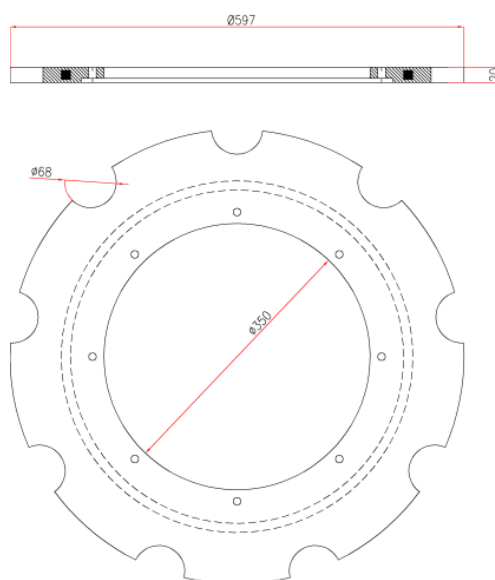
Descrizione	Materiale
PROFILO MANINE PRESA ETICHETTE	PARA NATUR. 50-55/Sh

**M983 - PROFILO**

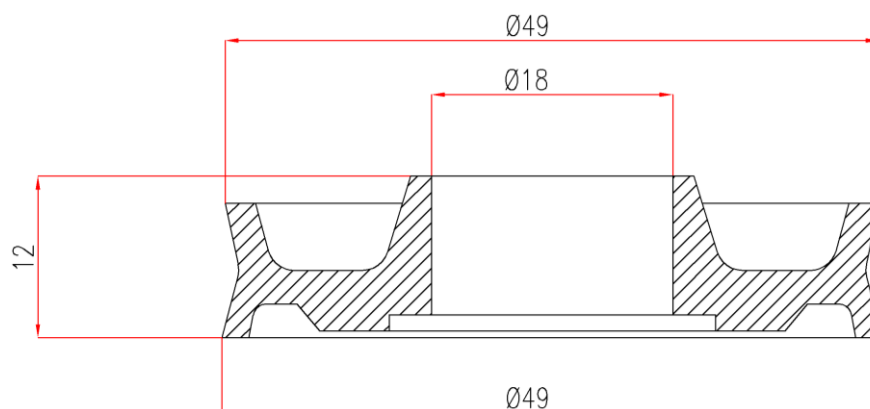
Descrizione	Materiale
PROFILO MANINE PRESA BOTTIGLIE	PARA NATUR. 50-55/Sh

**M1022 - OTTURATORE**

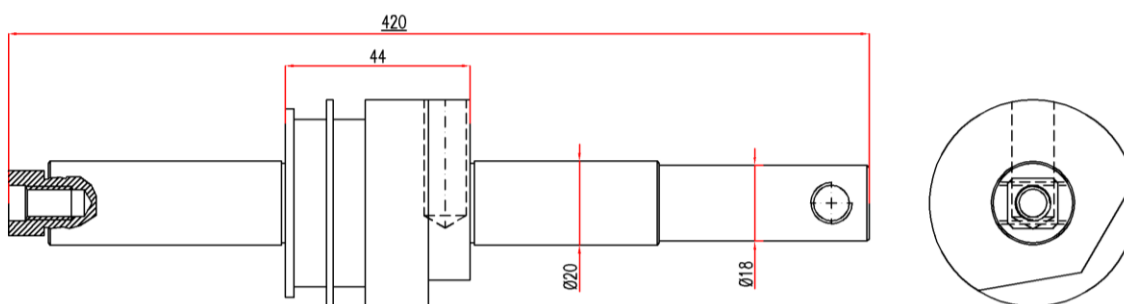
Descrizione	Codice	Materiale
CONO DELLA VALVOLA	TG 8-900-04-341-8	PTFE

**M1023 - STELLA**

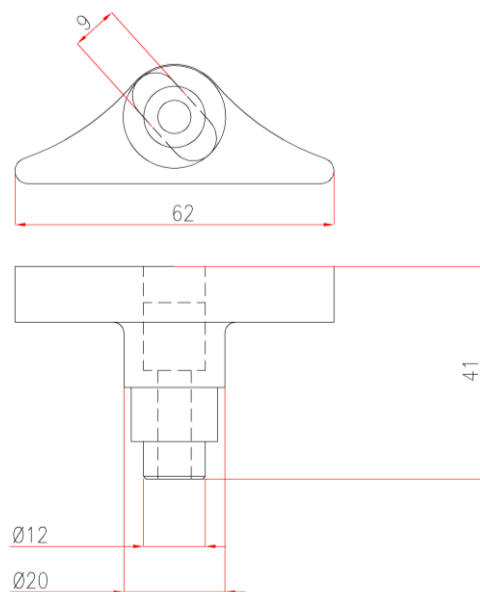
Descrizione	Codice	Materiale
STELLA ETICHETTATRICE SLEEVE	TG 793061 It 0,5	NBR NERO 90/Sh

**M1058 - TENUTA**

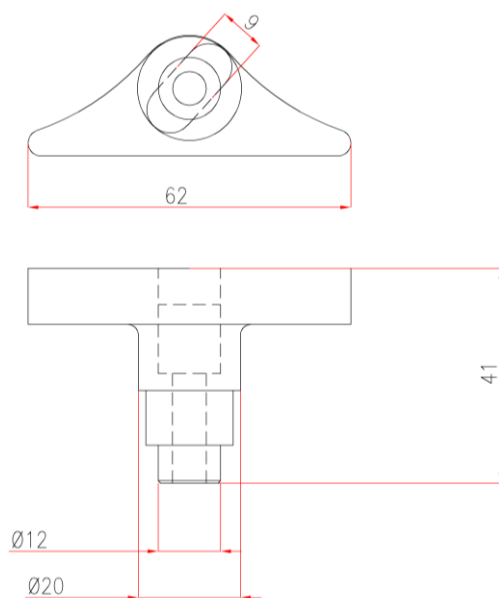
Descrizione	Codice	Materiale
TENUTA PISTONE	TG 1-128-50-237-0	PTFE

**M1064 - PERNO**

Descrizione	Codice	Materiale
PERNO	TG 1-128-52-234-0	AISI 304

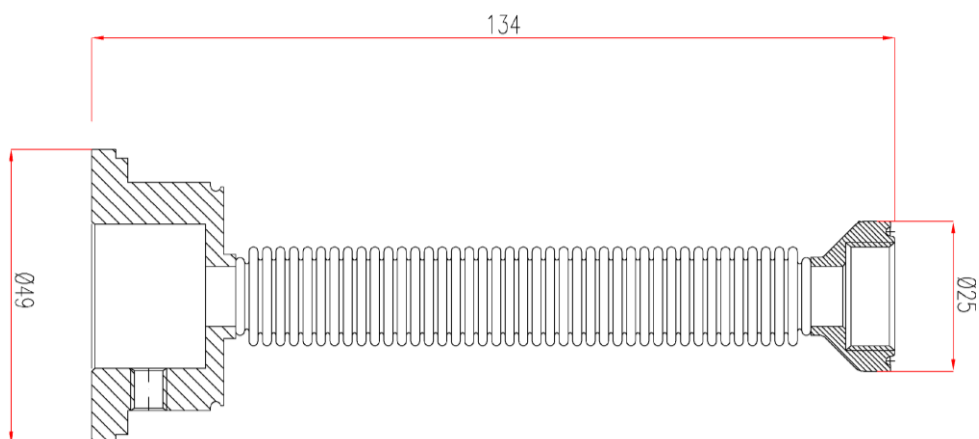
**M1119 - LEVA**

Descrizione	Codice	Materiale
ASSE PERNO STELLA SENSO ANTIORARIO	TG 80700253064	PEEK

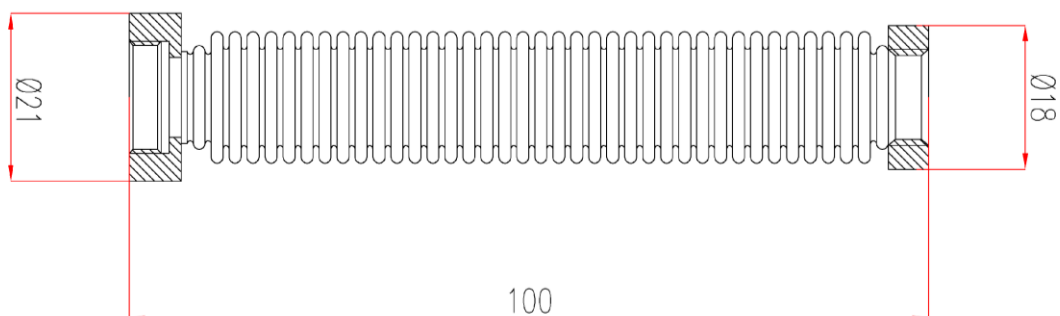
**M1120 - GUIDA**

Descrizione	Codice	Materiale
ASSE PERNO STELLA SENSO ORARIO	TG 80700253065	PEEK

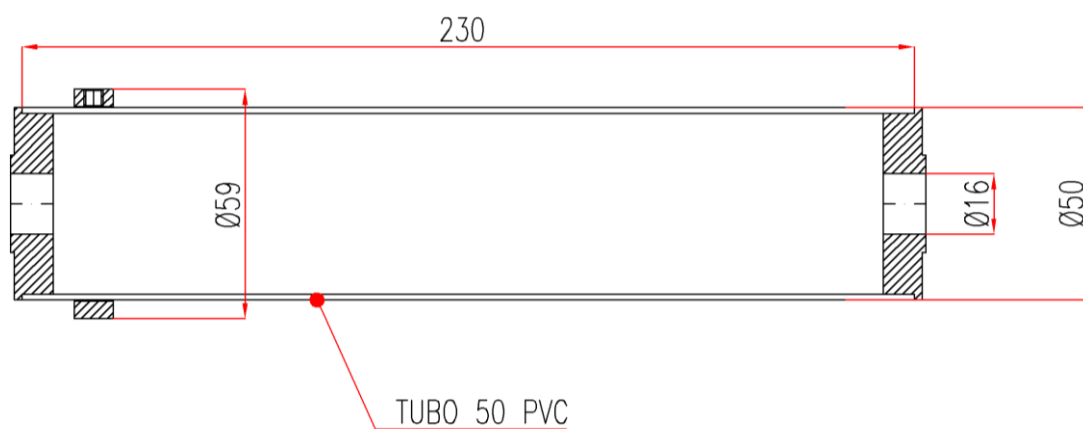


**M1197 - MANTICE**

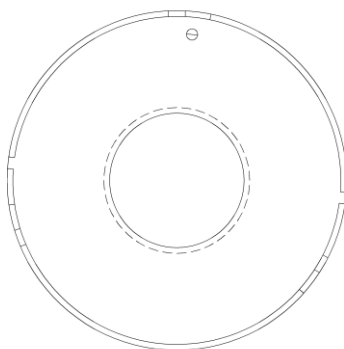
Descrizione	Codice	Materiale
MANTICE	F-0013536 TG 1-128-50-247-0	AISI 304

**M1227 - MANTICE**

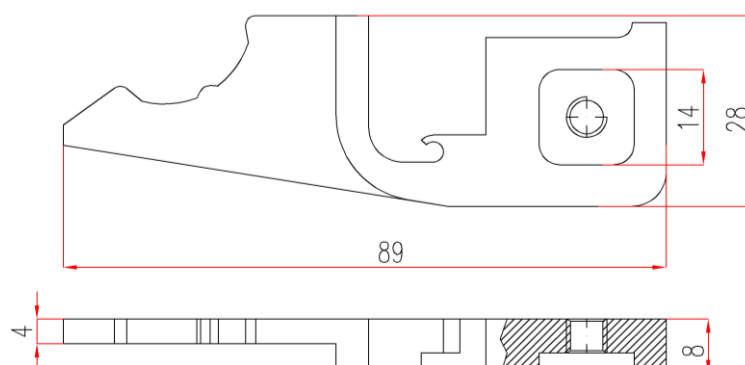
Descrizione	Codice	Materiale
MANTICE	TG 8-900-04-291-0	AISI 304

**M1238 - RULLO**

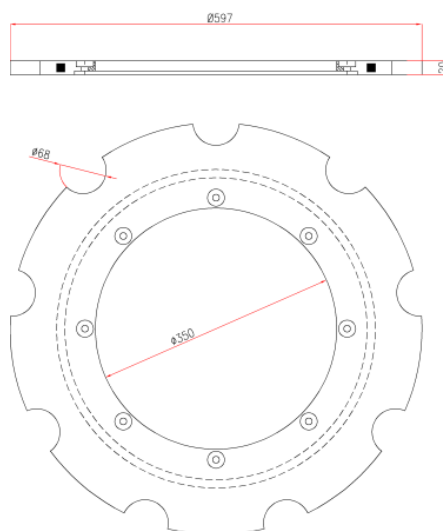
Descrizione
RULLO ETICHETTATRICE

**M1249 - PIATTELLO**

Descrizione	Materiale
DISCO PIATTELLO ETICHETTATRICE	AISI 304

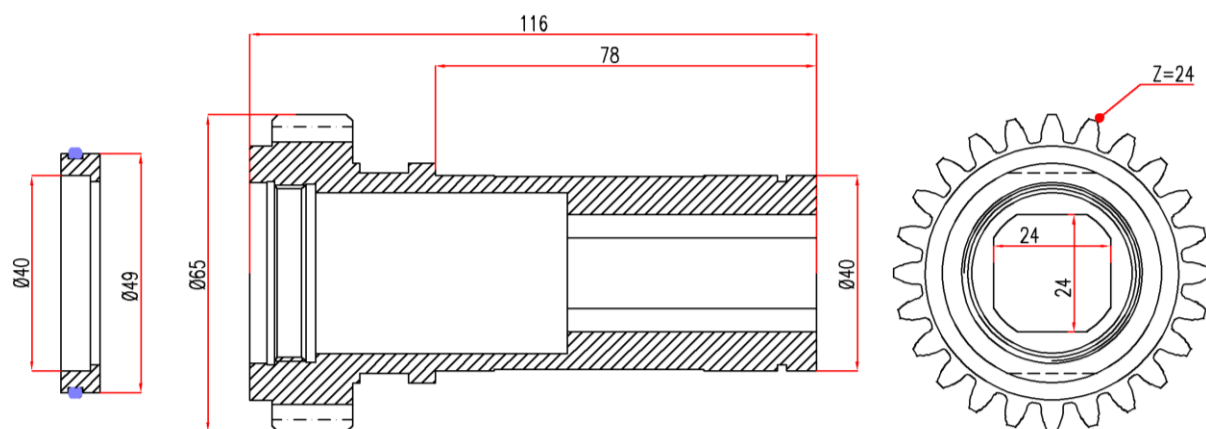
**M1322 - PINZA**

Descrizione	Codice	Materiale
PINZA PRESA BOTTIGLIE	DX TG 0-902-41-869-0 SX TG 0-902-41-869-1	AISI 304

**M1362 - STELLA**

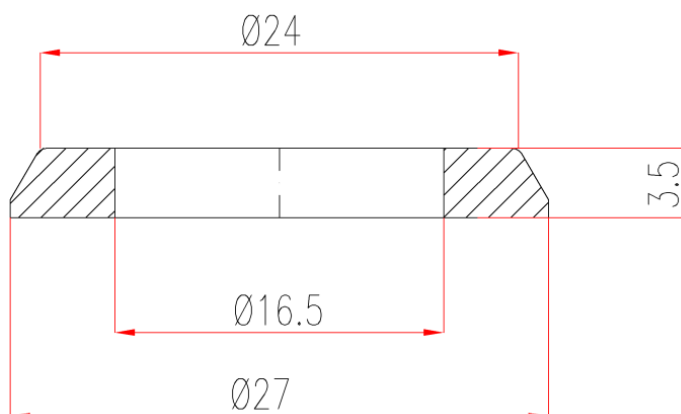
Descrizione	Codice	Materiale
STELLA ETICHETTATRICE SLEEVE It 0,5	TG K793061	NBR NERO 90/Sh

**M1370 - PARTICOLARE TAPPATORE**



Descrizione	Codice
MOZZO	TG 8-900-04-991-6

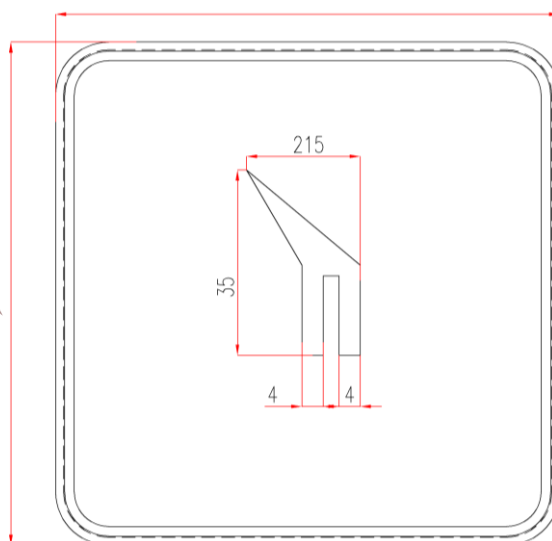
**M1377 - GUARNIZIONE**



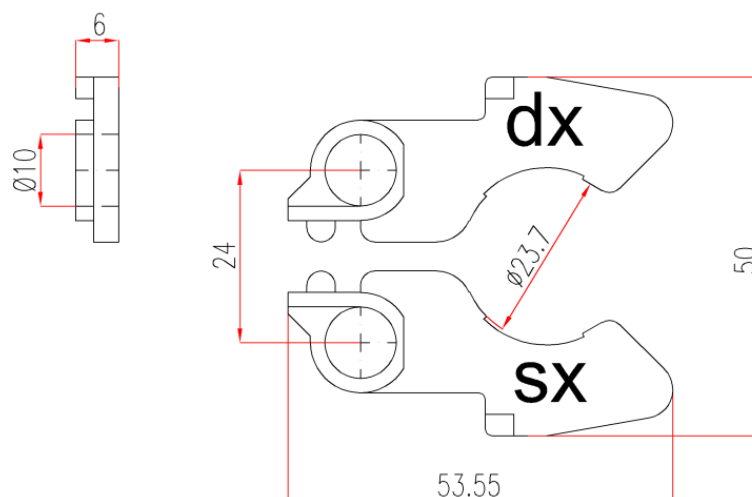
Descrizione
N° 2 OR Øi 21 Ø2 EPDM PEROX
N° 1 OR Øi 21 Ø3 EPDM PEROX
N° 1 OR Øi 13 Ø2 EPDM PEROX

**M1385 - GUARNIZIONE**

Portelle in asettico  
da realizzarsi su  
misura

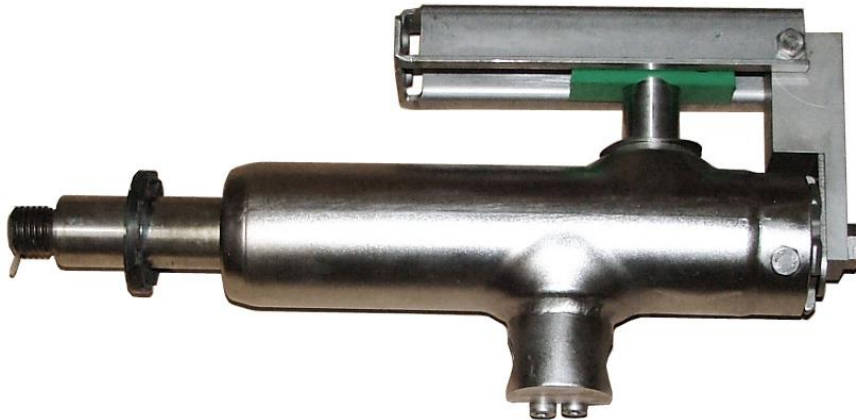


Descrizione
GUARNIZIONE PORTELLE ASETTICO

**M1407 - PINZA**

Descrizione	Codice	Materiale
PINZA PRESA BOTTIGLIE	SX TG 0-901-30-169-9 DX TG 0-901-30-172-1	AISI 304

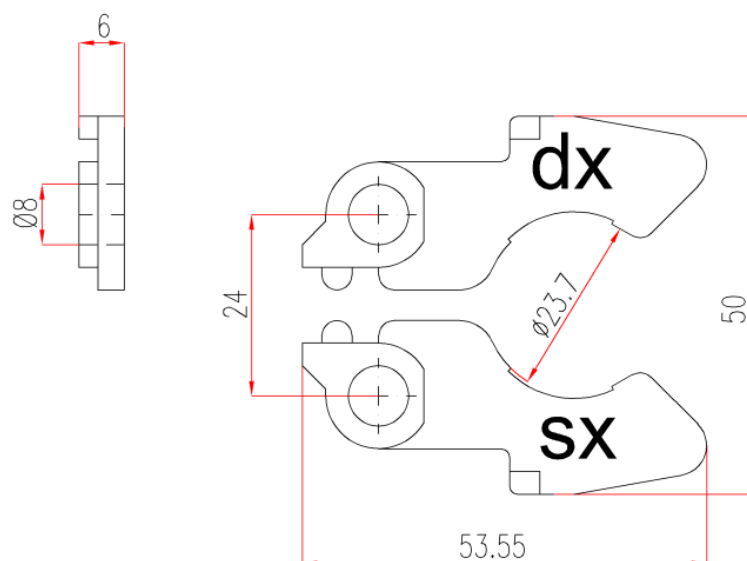
**MARTINETTO**



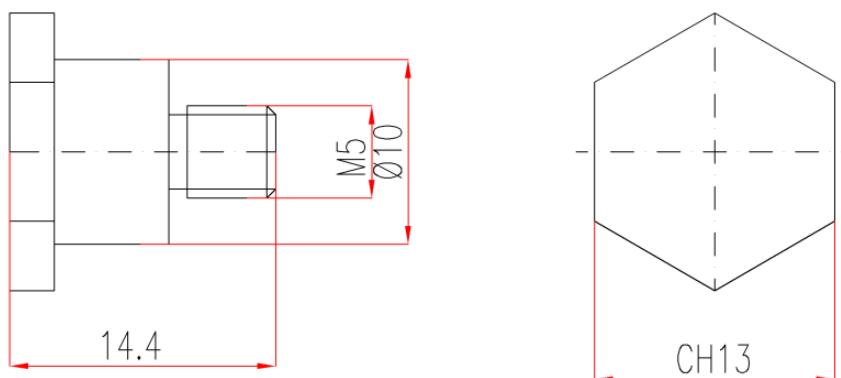
Codice	Materiale
TG 8-126-26-901-5	



Pos.	Codice	Codice Macchina	Descrizione	Materiale	qta
1		TG 1-800-38-393-4	LAMINA DI GUIDA ELEMENTO DI SCIVOLO		
2		TG 0-162-20-239-2	ANELLO TORICO		
3		TG 0-162-20-121-2	ANELLO TORICO		
4		TG 1-123-26-213-0	ANELLO TORICO		
5		TG 0-625-55-524-8	VITE		
6		TG 1-126-26-004-1	BUSSOLA		
7		TG 8-126-26-002-5	BARRA DEL PISTONE		
8		TG 1-123-26-057-0	ELEMENTO DI SCIVOLO		
9		TG 1-099-04-028-0	MOLLA DI PRESSIONE		
10		TG 1-123-26-034-0	PEZZO DI PRESSIONE		
11		TG 1-800-18-909-9	PIASTRA		
12		TG 1-123-26-234-0	RONDELLA		
13		TG 0-681-90-000-0	ROSETTA ELASTICA		
14		TG 0-902-97-715-1	ANELLO RASCHIATORE		
15		TG 8-129-90-566-0	BOCCOLA		
16		TG 1-099-51-090-0	RONDELLA		
17		TG 1-120-26-132-0	RULLO		
18		TG 1-123-26-182-0	ROSETTA DI SICUREZZA		
19		TG 1-123-26-234-0	RONDELLA		
20		TG 1-123-26-130-0	ROSETTA DI SICUREZZA		
21		TG 0-162-14-415-2	ANELLO TORICO		
22		TG 0-902-88-275-8	GUARNIZIONE		
23		TG 0-168-39-991-0	BANDA DI GUIDA		
24		TG 1-123-26-129-1	DISCO DEL PISTONE		
25		TG 0-624-13-922-2	VITE		

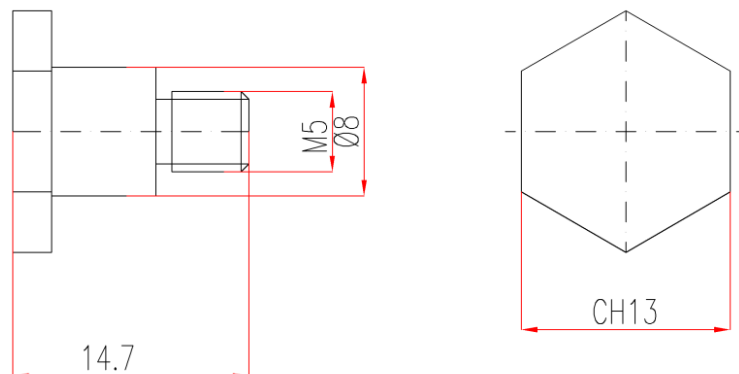
**M1407-1 - PINZA**

Descrizione	Codice	Materiale
PINZA PRESA BOTTIGLIE	SX TG 0-901-30-169-9 DX TG 0-901-30-172-1	PEEK

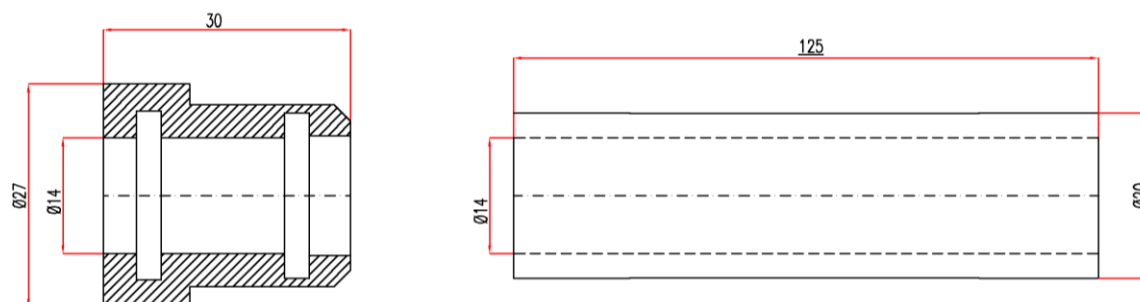
**M1408 - VITE**

Descrizione	Codice	Materiale
VITE PINZA	TG 1-128-52-067-0	INOX



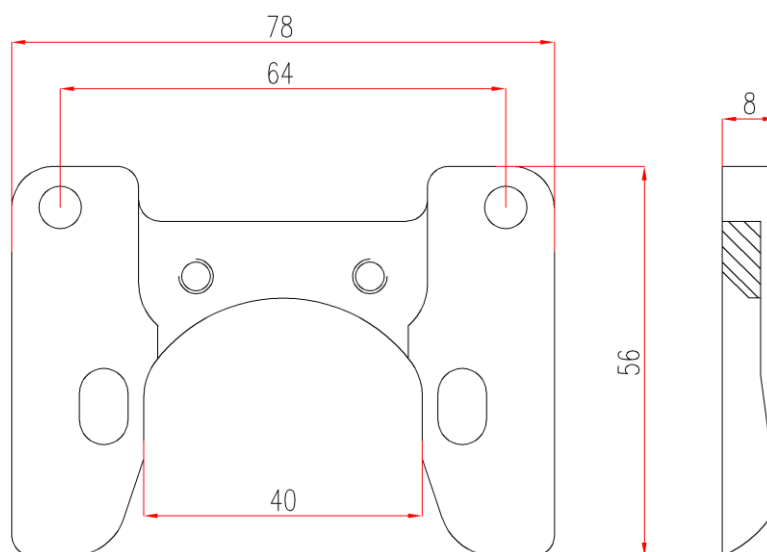
**M1408-1 - VITE**

Descrizione	Codice	Materiale
VITE PINZA	TG 1-128-52-067-0	PEEK

**M1430 - UGELLO**

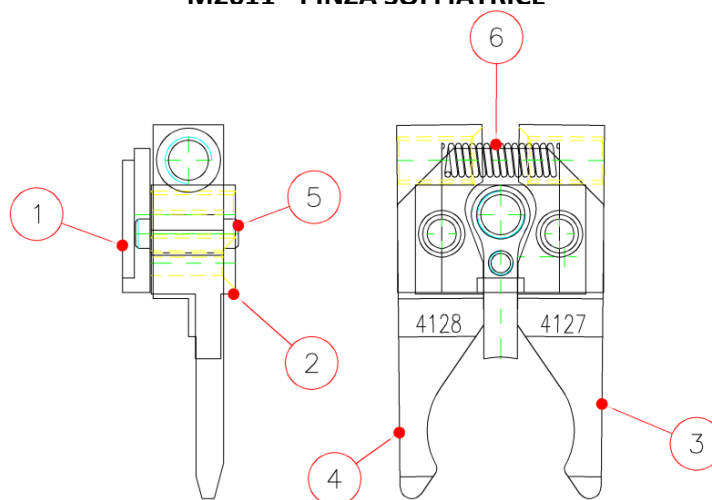
Descrizione	Codice	Materiale
KIT TENUTA ASTE DI STIRO	TG 0-902-70-760-4	PEEK

**M1434 - SUPPORTO**

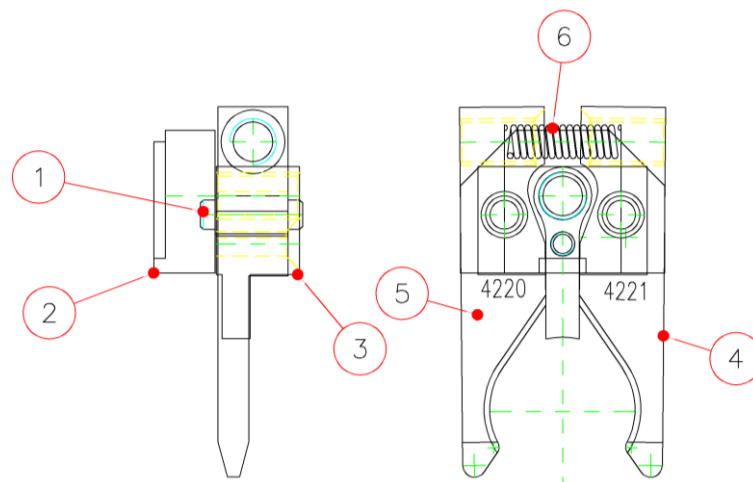


Descrizione	Codice	Materiale
SUPPORTO	TG 0-901-31-063-5	AISI 304

**M2011 - PINZA SOFFIATRICE**

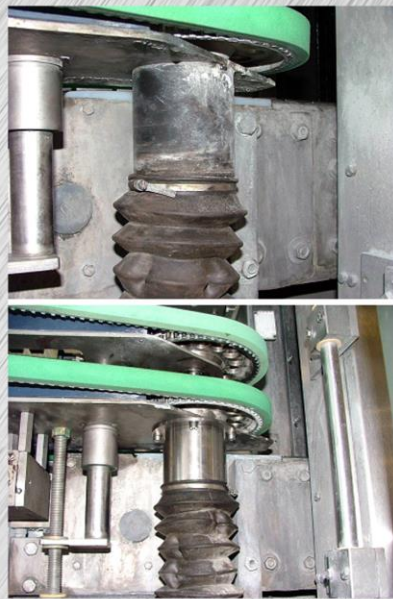


Pos.	Codice	Descrizione	Materiale	qta
1	M510	PIASTRINA	AISI 304	1
2	M511	PIASTRINA	AISI 304	1
3	M512	PINZA	AISI 304	1
4	M513	PINZA	AISI 304	1
5	M514	PERNETTO	AISI 304	2
6		MOLLA	ACCIAIO	1

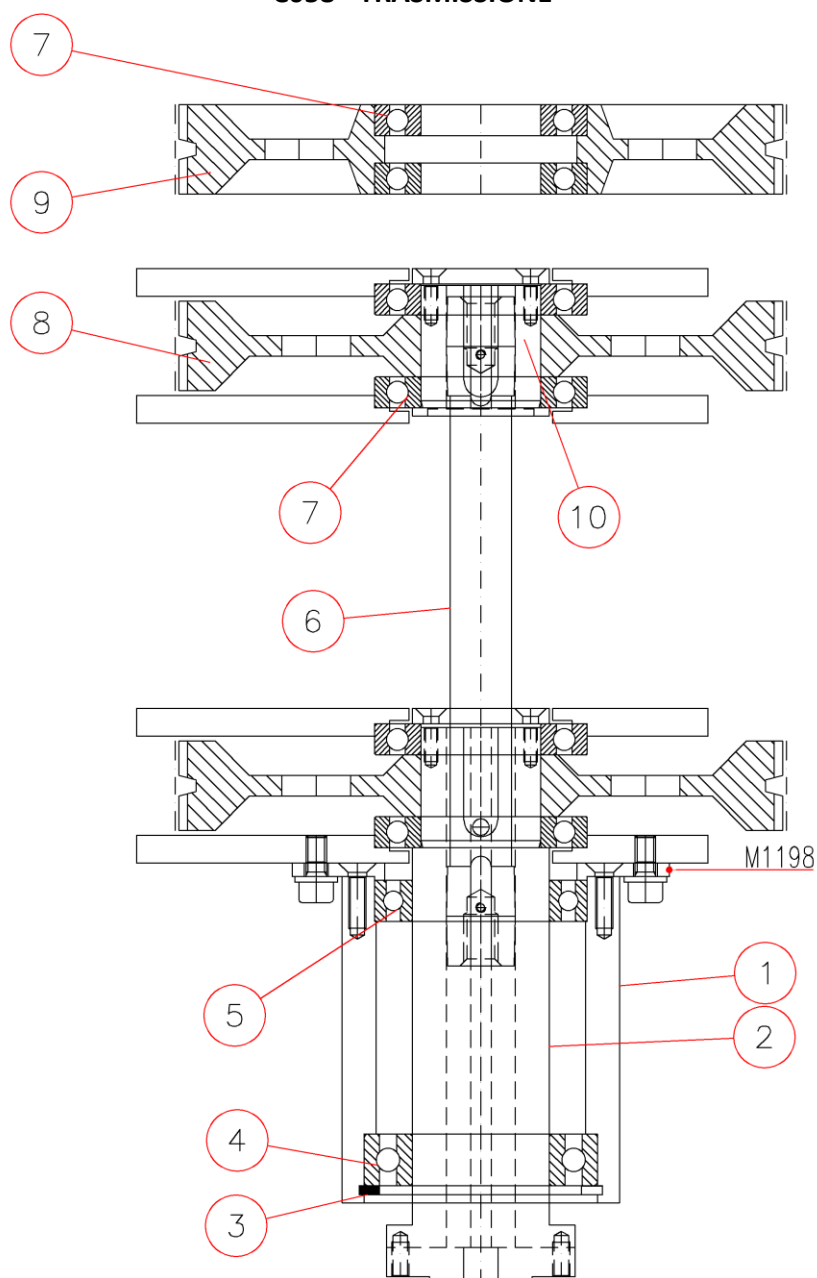
**M2012 - PINZA SOFFIATRICE**

Pos.	Codice	Descrizione	Materiale	qta
1	M514	PERNETTO	AISI 304	2
2	M515	PIASTRINA	AISI 304	1
3	M516	PIASTRINA	AISI 304	1
4	M517	PINZA	AISI 304	1
5	M518	PINZA	AISI 304	1
6		MOLLA	ACCIAIO	1

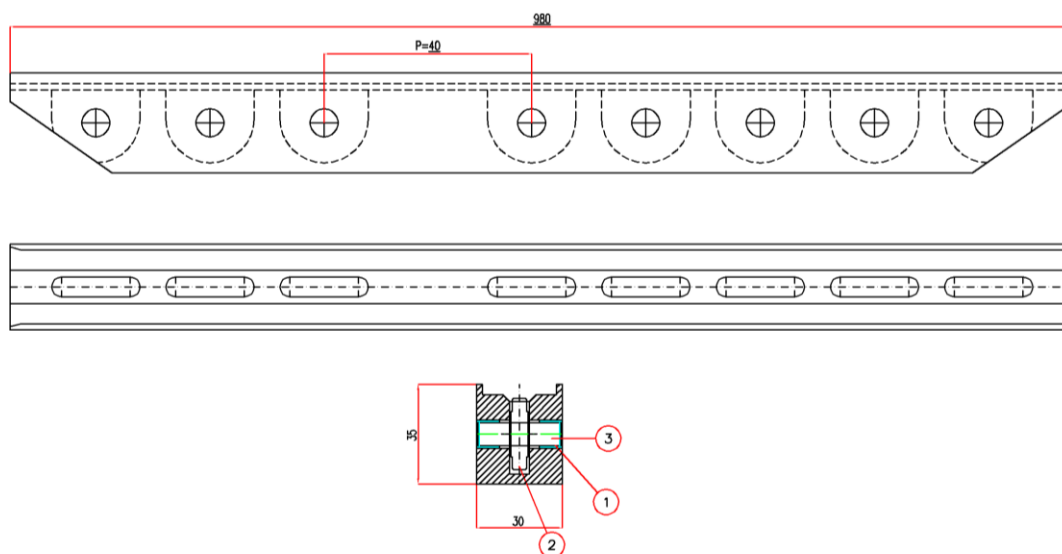
## Parte III



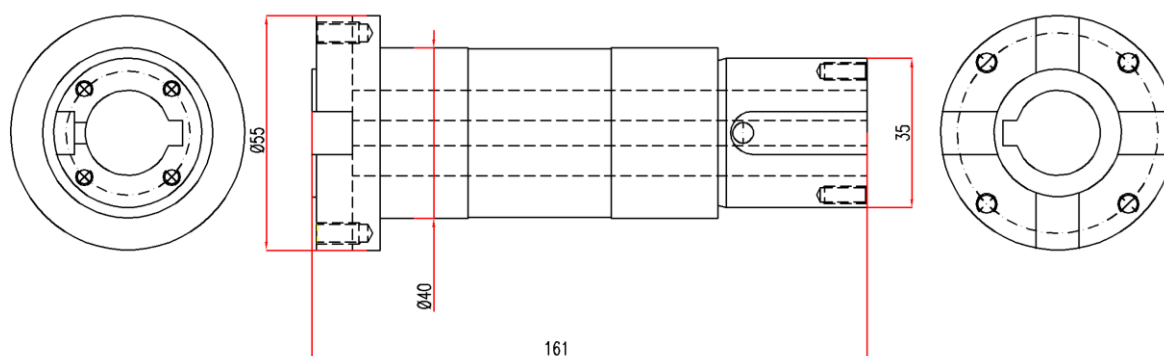
**C058 - TRASMISSIONE**



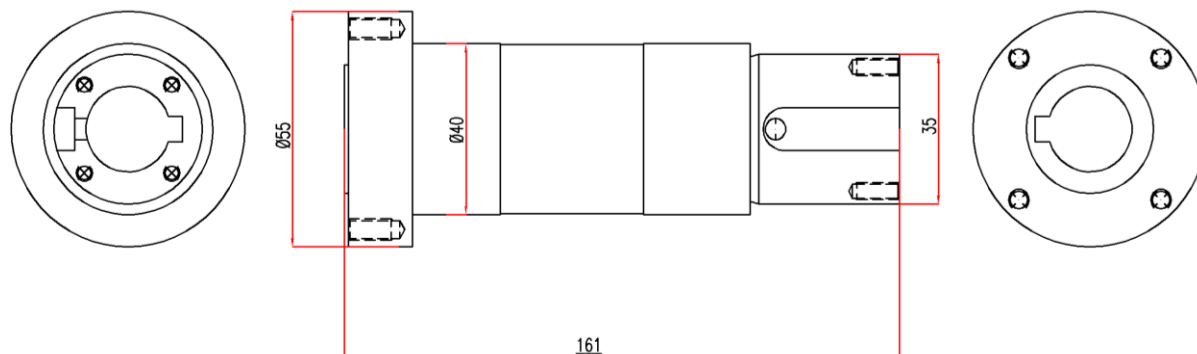
Pos.	Codice	Descrizione	Codice	Materiale
1	M1199	MOZZO		AISI 304
2	M1189	MOZZO	TG 1-712-24-380-0	B14
3		SEEGER I 68		
4		CUSCINETTO 6008 2RS		
5		CUSCINETTO 61908 2RS		
6	M1194	ALBERO	TG 8-712-24-027-6	C40
7		CUSCINETTO 16007 2RS		
8	M191-1		TG 1-712-24-385-1	
9	M190-1		TG 1-712-24-386-1	

**M576 - GUIDA**

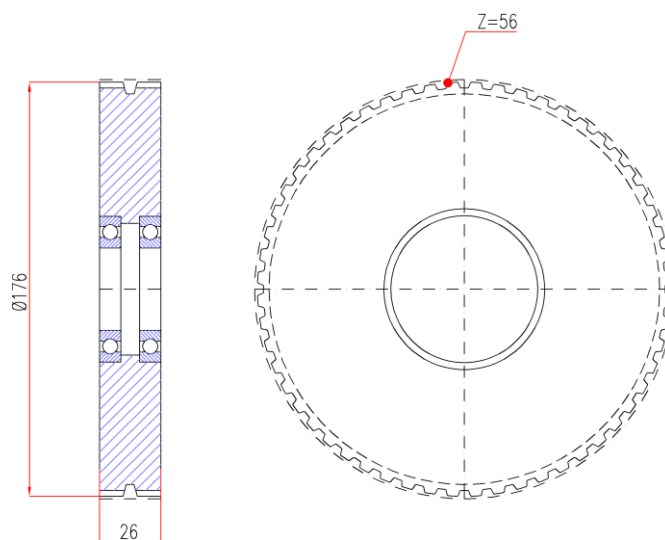
Pos.	Codice	Descrizione	Materiale	qta
1		BOCCOLE IN PLASTICA		24
2	M578	RUOTA	DERLIN	24
3	M577	PERNO RUOTA	AISI 304	50

**M1189 - MOZZO (ORIGINALE)**

Descrizione	Codice	Materiale
PERNO	TG 1-712-24-380-0	B14

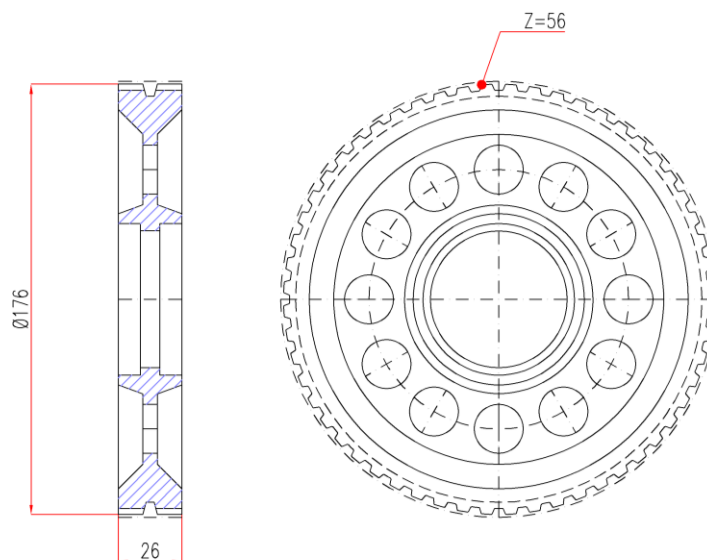
**M1189-1 - MOZZO (MODIFICATO)**

Descrizione	Codice	Materiale
PERNO	TG 1-712-24-380-0	B14

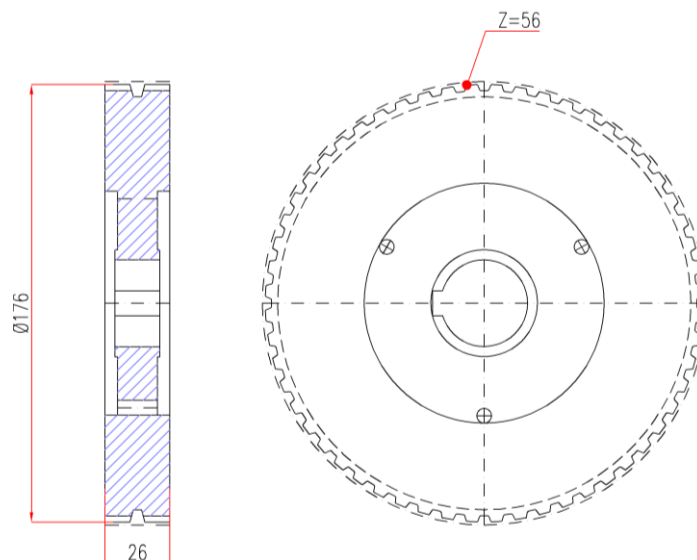
**M1190 - RUOTA DENTATA**

Descrizione	Codice	Materiale
RUOTA DENTATA	TG 1-712-24-386-1	ANTICORODAL



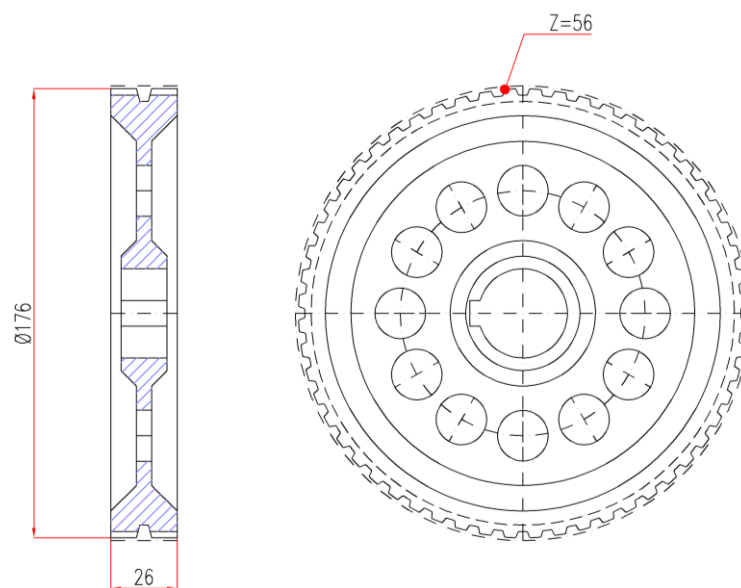
**M1190-1 - RUOTA DENTATA**

Descrizione	Codice	Materiale
RUOTA DENTATA	TG 1-712-24-386-1	INOX

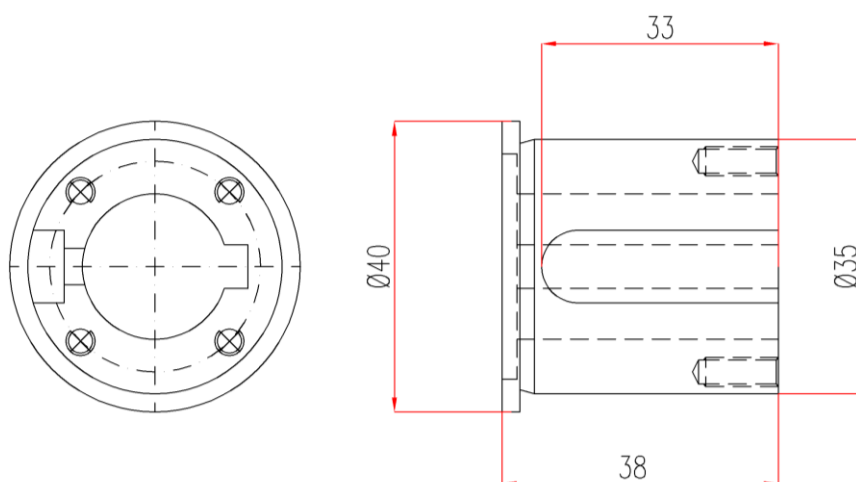
**M1191 - RUOTA DENTATA**

Descrizione	Codice	Materiale
RUOTA DENTATA	TG 1-712-24-385-1	ANTICORODAL



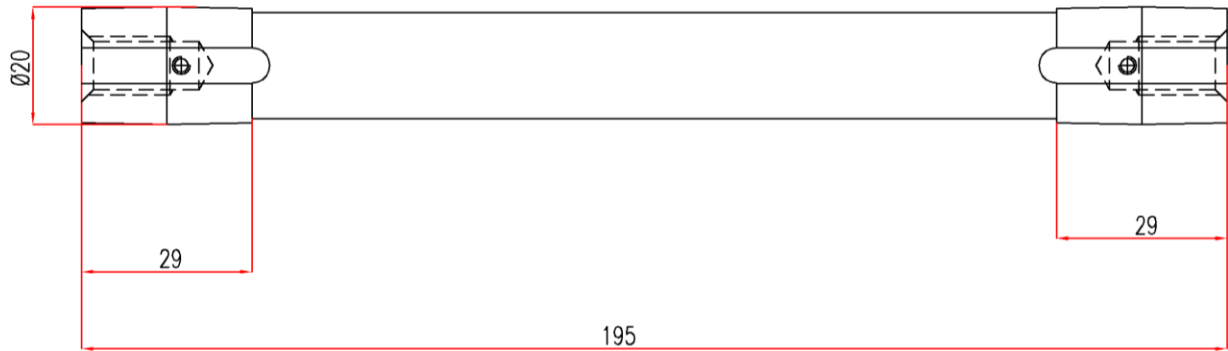
**M1191-1 - RUOTA DENTATA**

Descrizione	Codice	Materiale
RUOTA DENTATA	TG 1-712-24-385-1	AISI 304

**M1193 - MOZZO**

Descrizione	Codice	Materiale
MOZZO	TG 1-712-24-381-0	AISI 304

**M1194 - ALBERO**

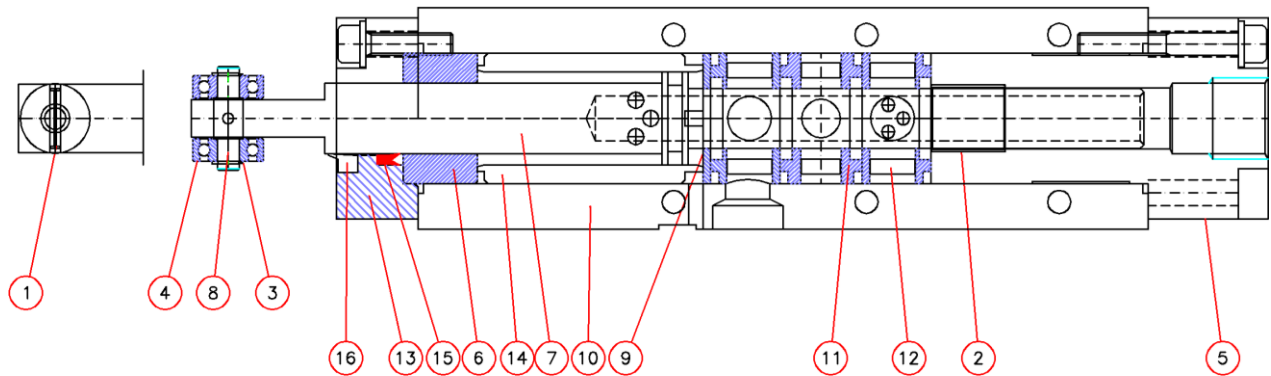


Descrizione	Codice	Materiale
ALBERO	TG 8-712-24-027-6	C40

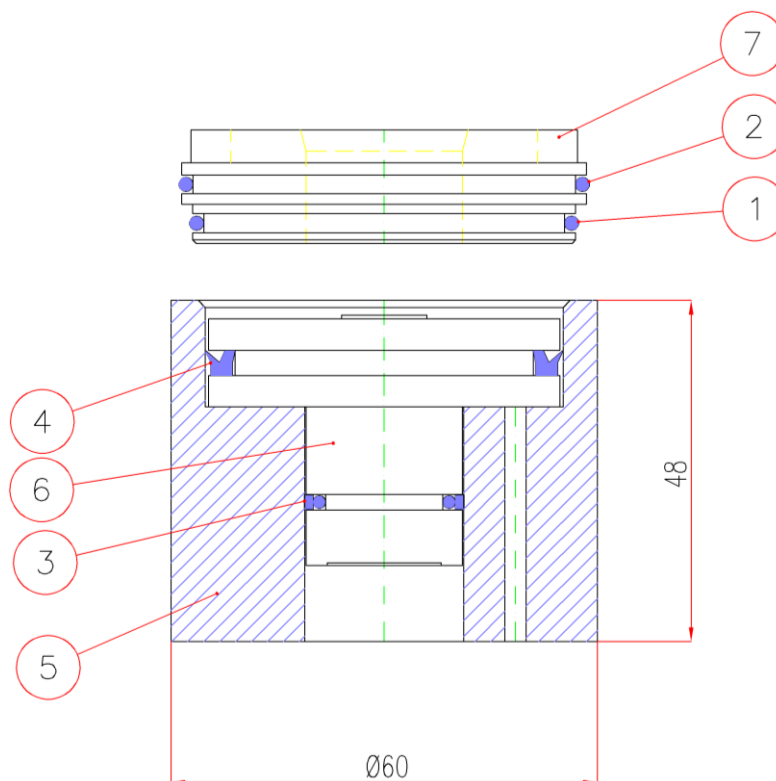
## Parte IV



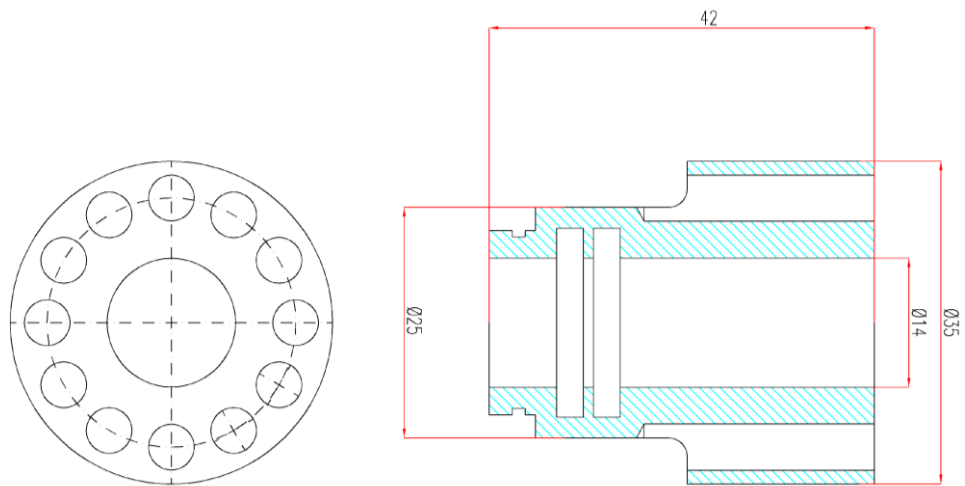
**C048 - VALVOLA A TRE VIE SOFFIATRICE**



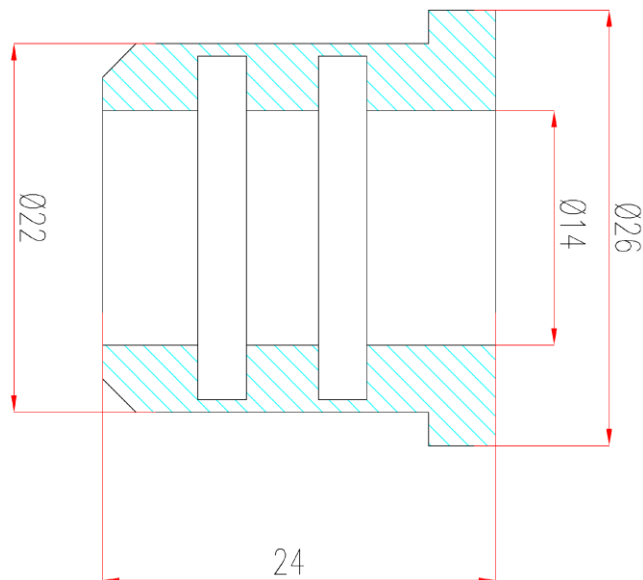
Pos.	Codice	Descrizione	qta
1		SPINA ELAS. 3x16 UNI 6873-71	1
2		BOCCOLA CILINDRICA DU16x18 L=20	1
3		SEEGER E6	2
4		CUSCINETTO 626 2RS	2
5	M1000	TESTATA	1
6	M1001	BOCCOLA	1
7	M1002	ASTA CENTRALE	1
8	M1003	PERNETTO	1
9	M1004	RONDELLA	1
10	M1005	CORPO CENTRALE	1
11	M1019	PROGETTO	1
12	M1020	PROGETTO	2
13	M870	TESTATA	1
14	M999	CURSORE	1
15		TENUTA	1
16		IDROSTOP 24200190	1

**C070 – VALVOLA SOFFIAGGIO VSP152122**

Pos.	Codice	Descrizione	Materiale	qta
		KIT VALVOLA TG 0-902-12-237-8		
1		ORMO480-20		1
2		ORMO540-20		1
3		OR 2068 CAS	VITON ROSSO	1
4		TENUTA CLEANING K1-PN.	HPU ROSSO	1
5	M1467	CORPO VALVOLA PROTEZIONE		1
6	M1468	STELO VALVOLA SOFFIAGGIO		1
7	M1469	TAPPO CHIUSURA VALVOLA		1

**M475 - TENUTA**

Descrizione	Materiale
TENUTA ASTA 16 CAVITA'	PEEK

**M476 - TENUTA**

Descrizione	Materiale
TENUTA ASTA 13 CAVITA'	PEEK

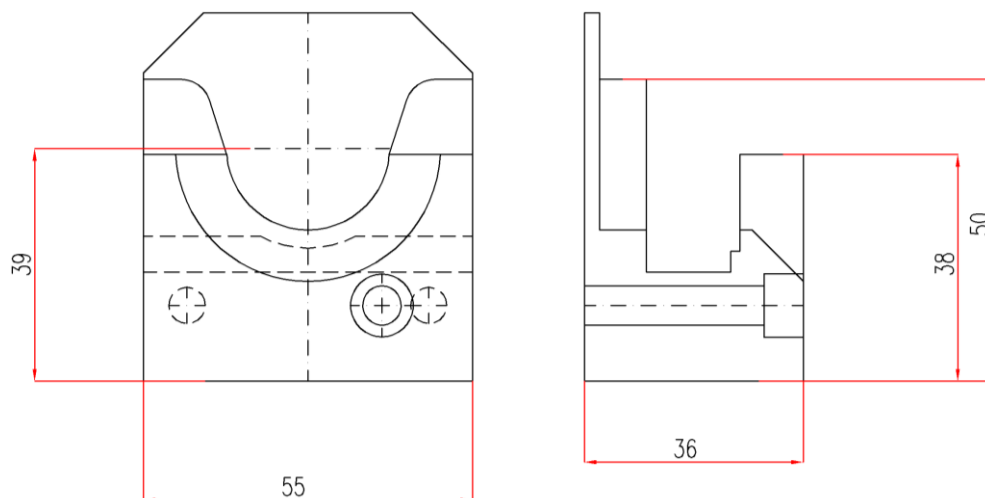
**PINZA**



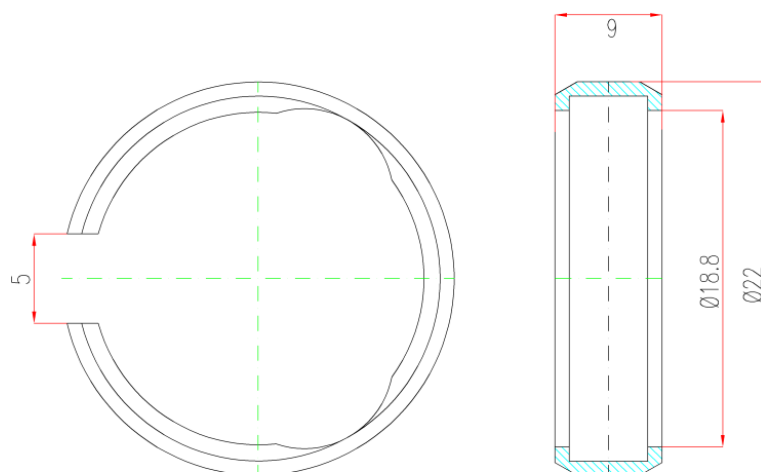
**PINZA**





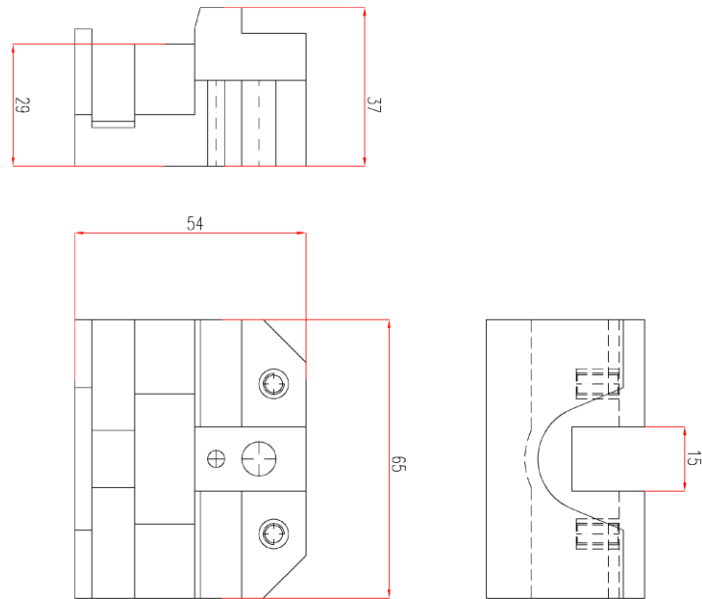
**M477 - TAZZA**

Descrizione	Materiale
TAZZA ENTRATA PREFORMA SENZA PIATTO	POM NERO

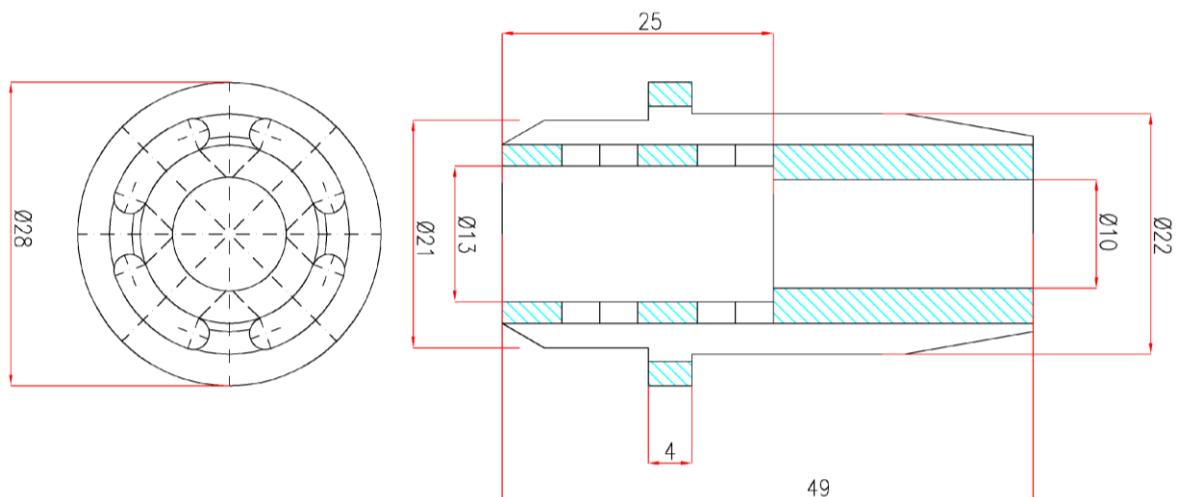
**M478 - ANELLO**

Descrizione	Materiale
ANELLO STELO	AISI 304

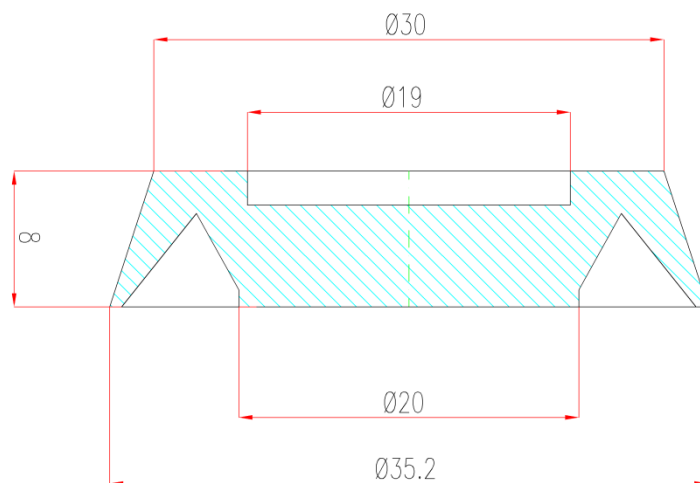
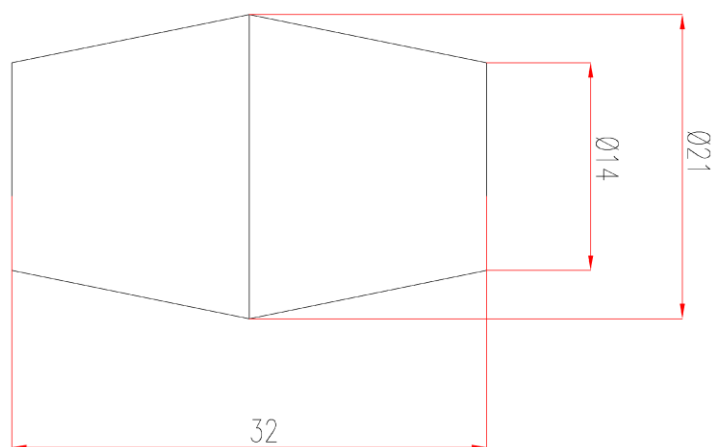


**M479 - TAZZA**

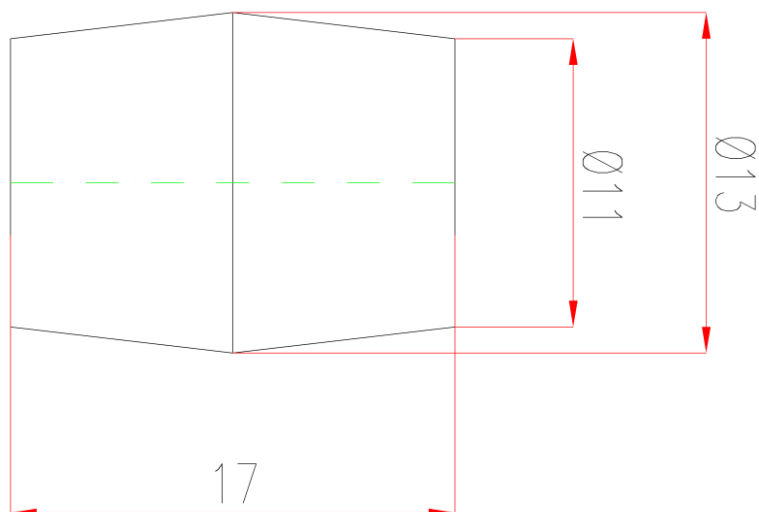
Descrizione	Materiale
TAZZA USCITA PREFORMA CON PIATTO INOX	POM NERO + INOX

**M489 - BOCCOLA**

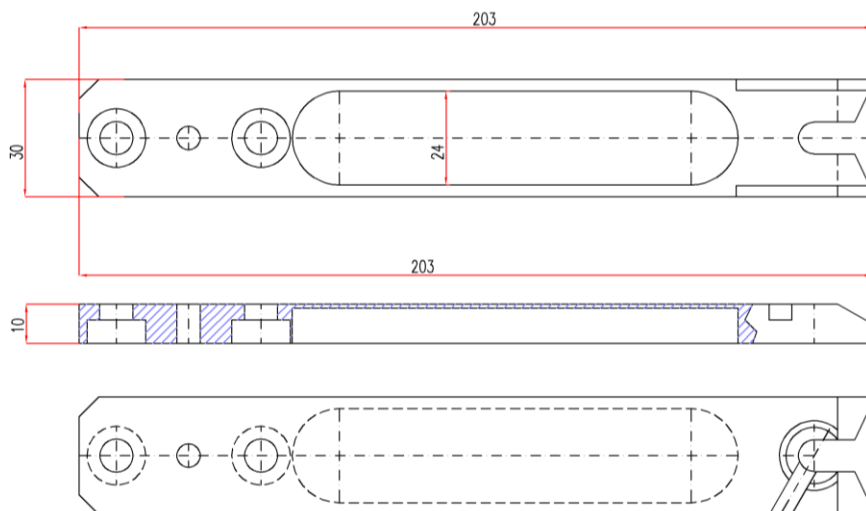
Descrizione	Materiale
BOCCOLA PRESTIRO	PVDF

**M493 - PARACOLPI****M494 - AMMORTIZZATORE**

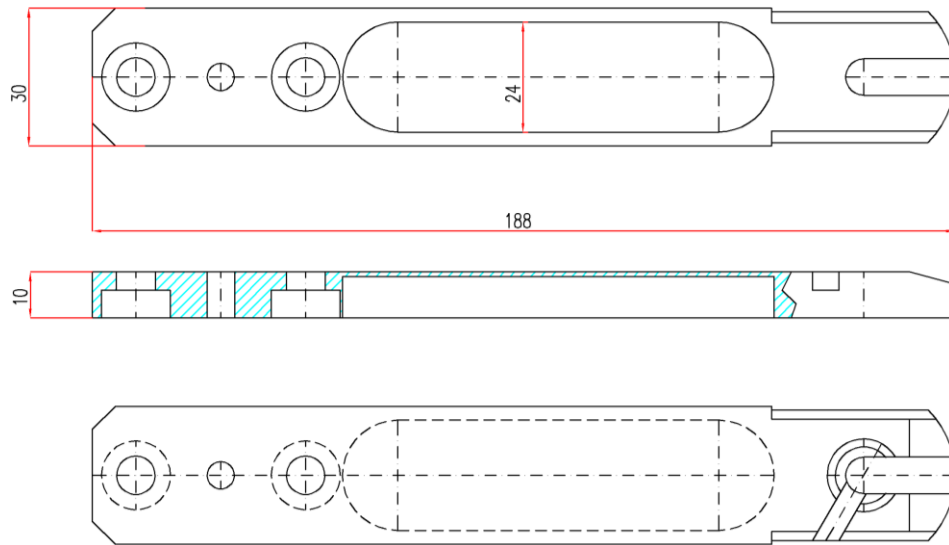
Descrizione	Materiale
AMMORTIZZATORE ASTA STIRO CILINDRO GRANDE	NBR 85/90 SH

**M495 - AMMORTIZZATORE**

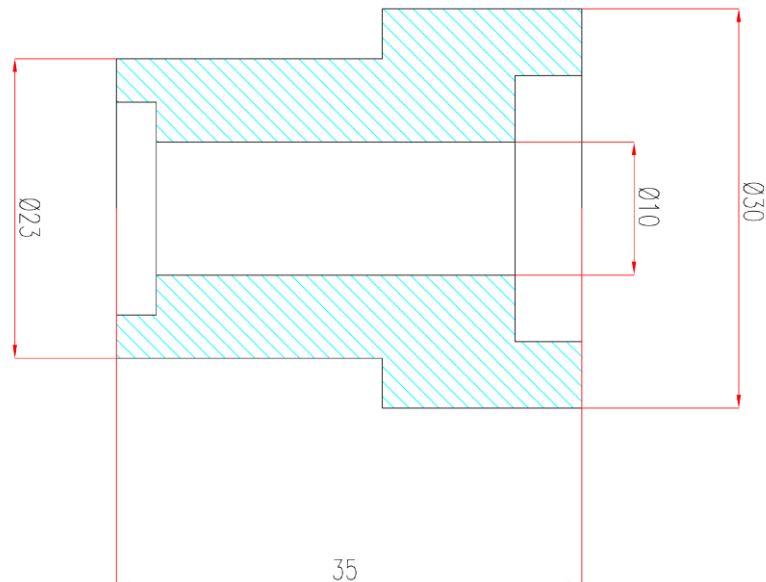
Descrizione	Materiale
AMMORTIZZATORE UGELLO CILINDRO PICCOLO	NBR 85/90 SH

**M927 - LEVA**

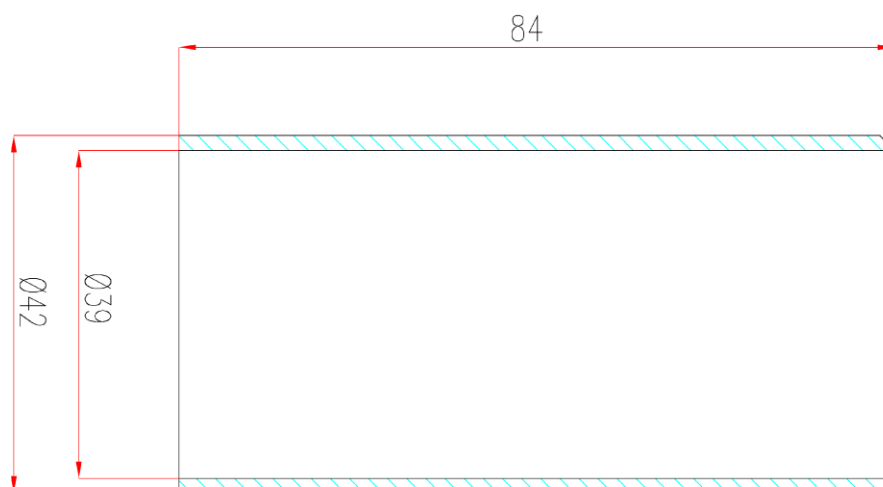
Descrizione	Codice	Materiale
LEVA PINZA	TG 40004727701 0L	AISI 304

**M499 - LEVA**

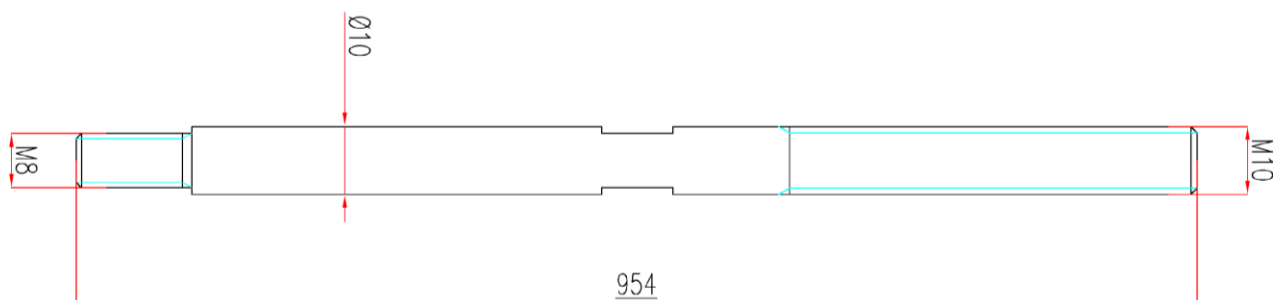
Descrizione	Codice	Materiale
LEVA PINZA	TG 5950590.010A	AISI 304

**M501 - GUIDA ASTA**

Descrizione	Codice	Materiale
GUIDA	TG 595111000	PEEK

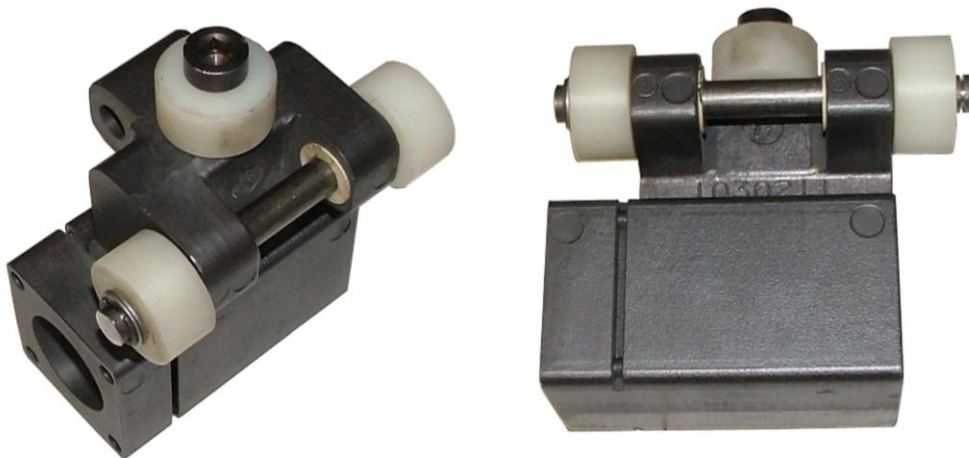
**M502 - DISTANZIALE**

Descrizione	Codice	Materiale
DISTANZIALE TENUTA	TG 595121601	RESINA ACETALICA

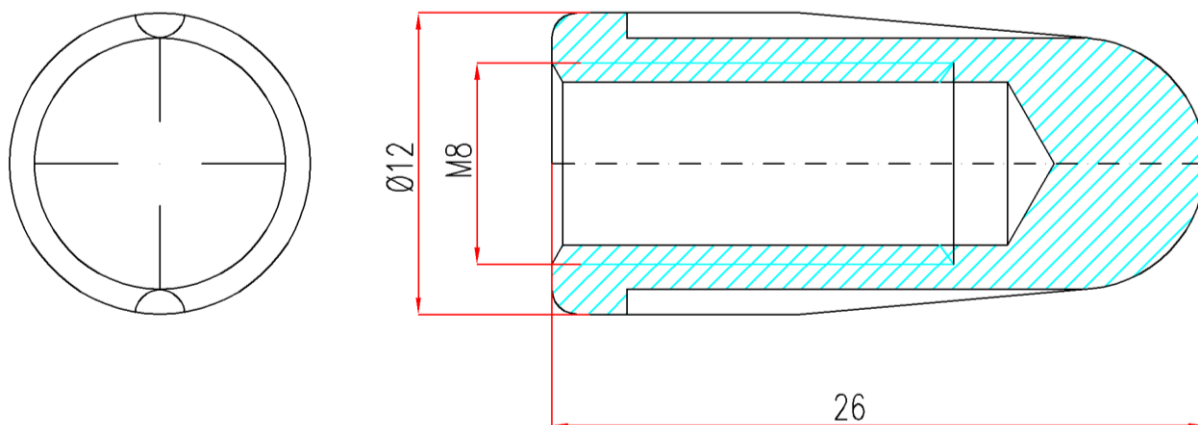
**M503 - ASTA STIRO**

Descrizione	Materiale
ASTA STIRO	AISI 304

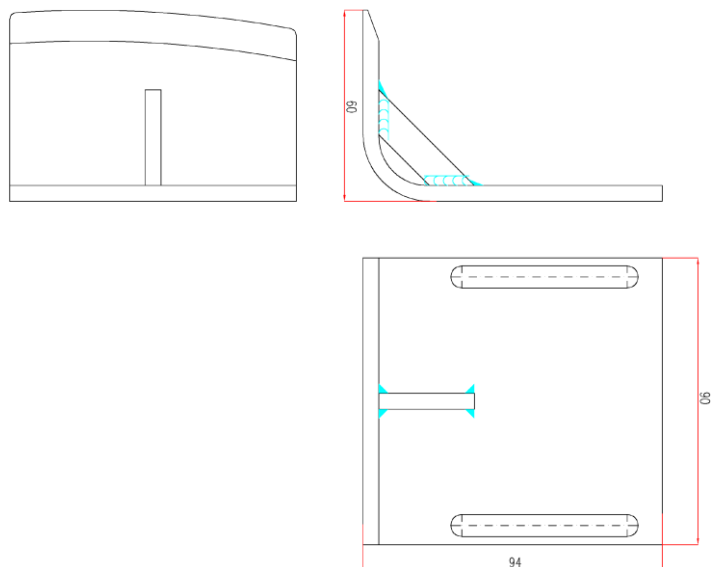
**SUPPORTO CATENE**



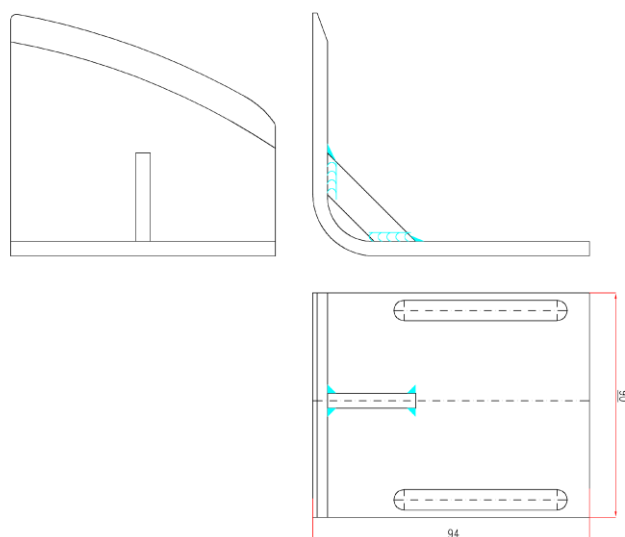
**M538 - PUNTALE**



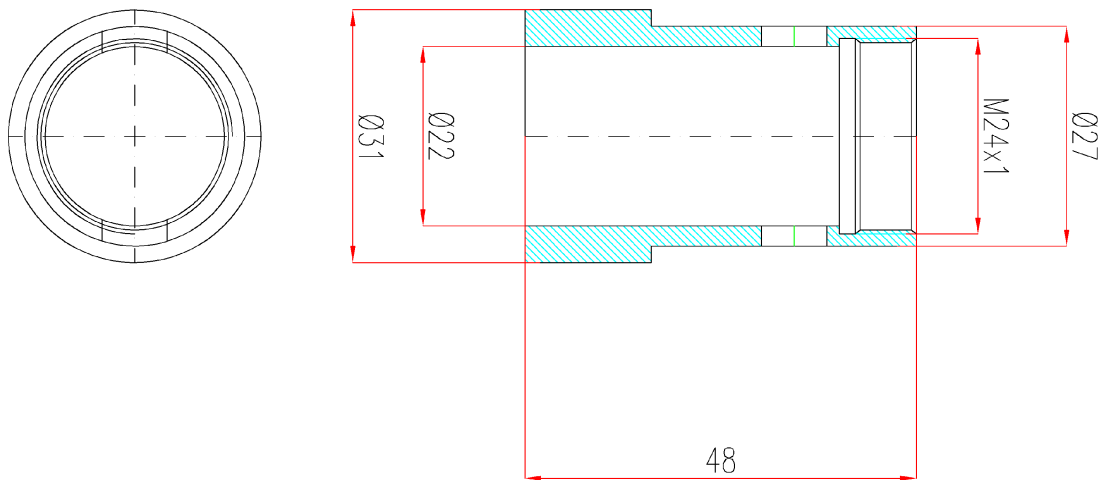
Descrizione	Materiale
PUNTALE ASTA	AISI 304

**M580 – MANINA ESPULSIONE**

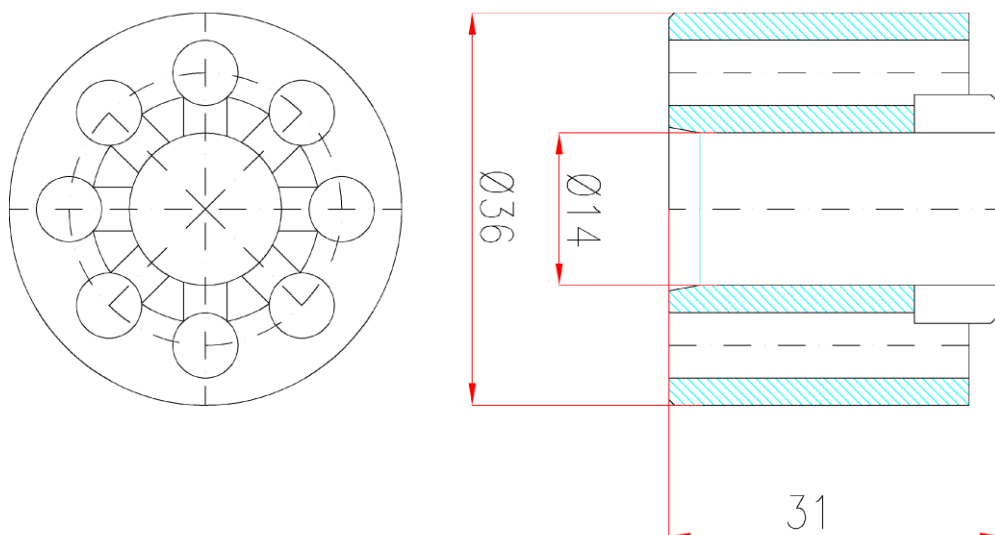
Descrizione	Codice	Materiale
MANINA ESPULSIONE	TG 01073843501b37	ANTICORODAL

**M581 - MANINA ESPULSIONE**

Descrizione	Codice	Materiale
MANINA ESPULSIONE	TG 3-73843601a37	ANTICORODAL.

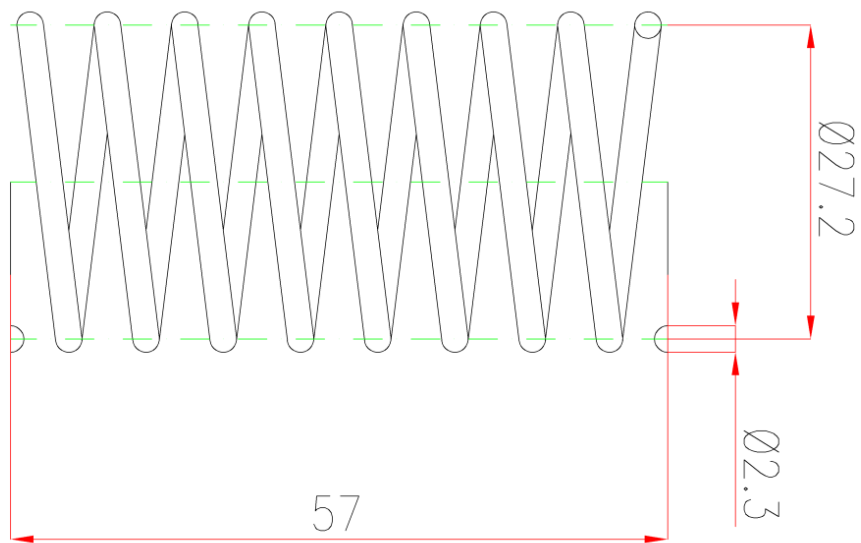
**M582 - MOZZO**

Descrizione	Materiale
MOZZO ASTA STIRO	AISI 304

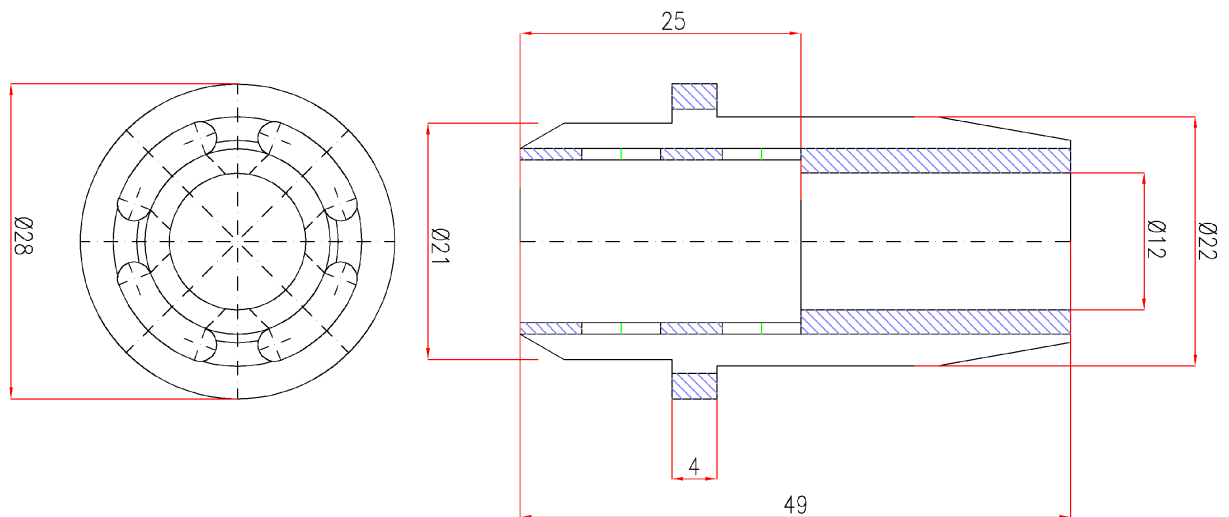
**M585 - BOCCOLA**

Descrizione	Materiale
BOCCOLA ASTA DI STIRO	PEEK

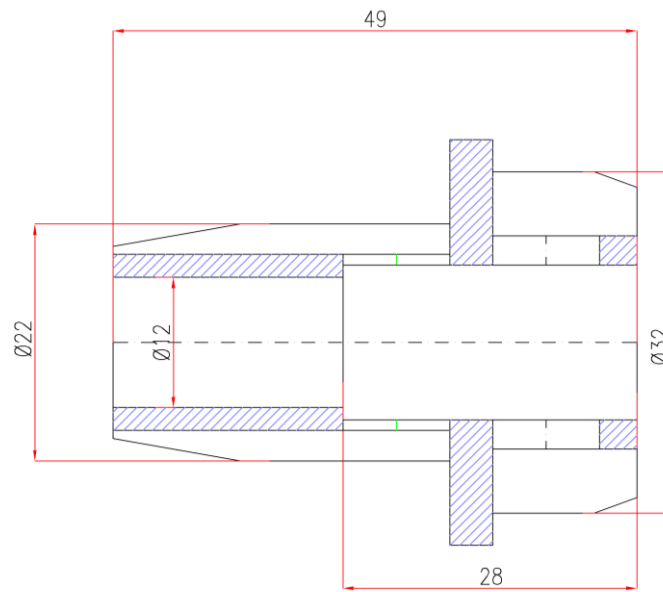


**M586 - MOLLA**

Descrizione	Materiale
MOLLA	ACC INOX

**M938 - BOCCOLA**

Descrizione	Materiale
BOCCOLA PRESTIRO	PVDF

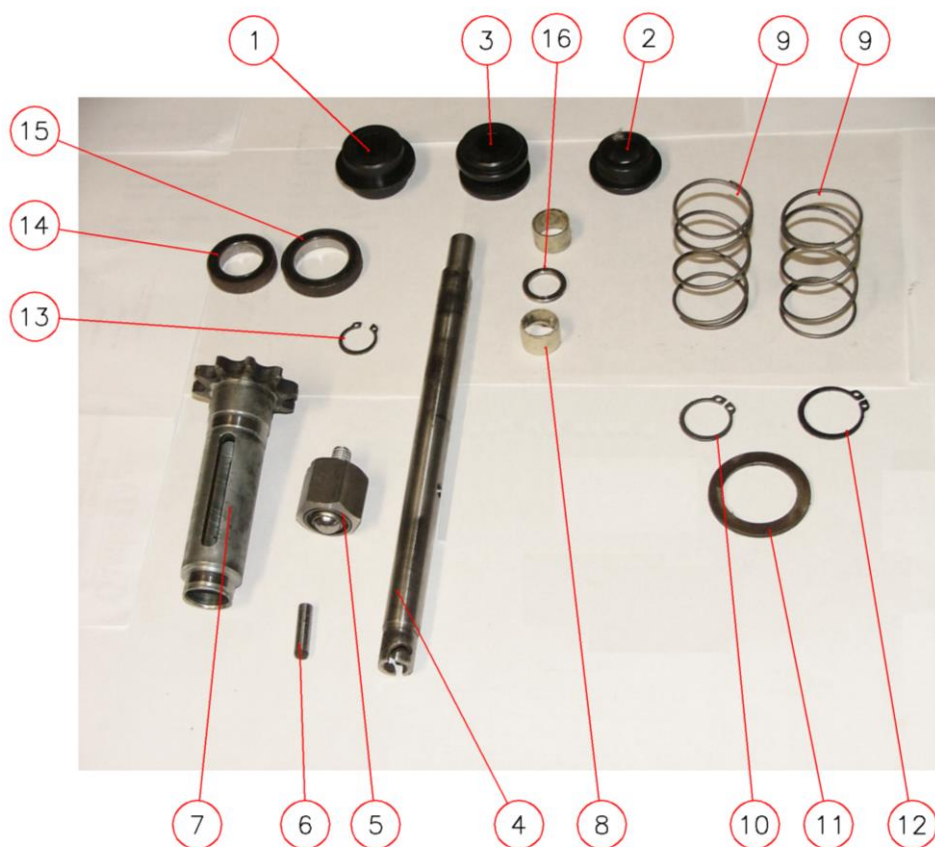
**M939 - BOCCOLA**

Descrizione	Materiale
BOCCOLA PRESTIRO	PVDF

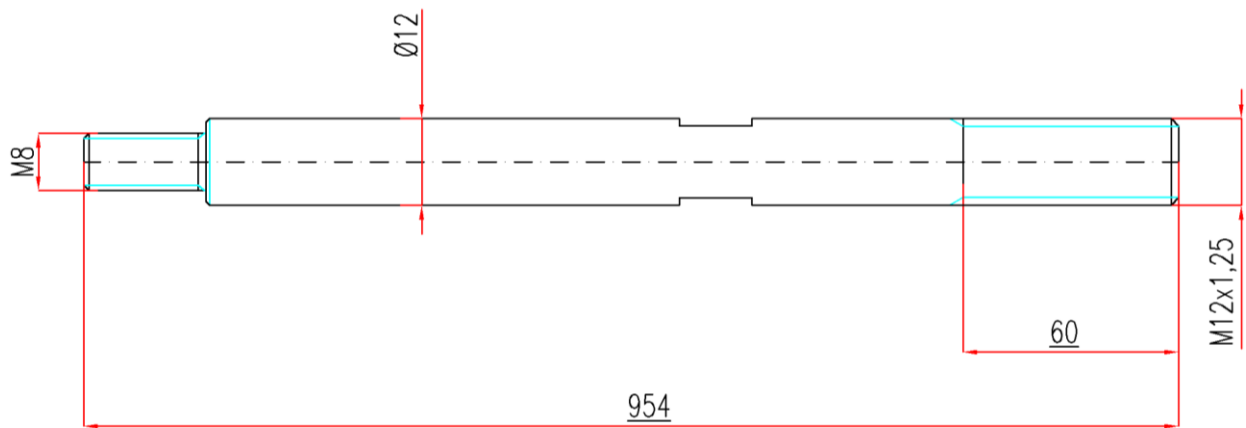
**SPINA**



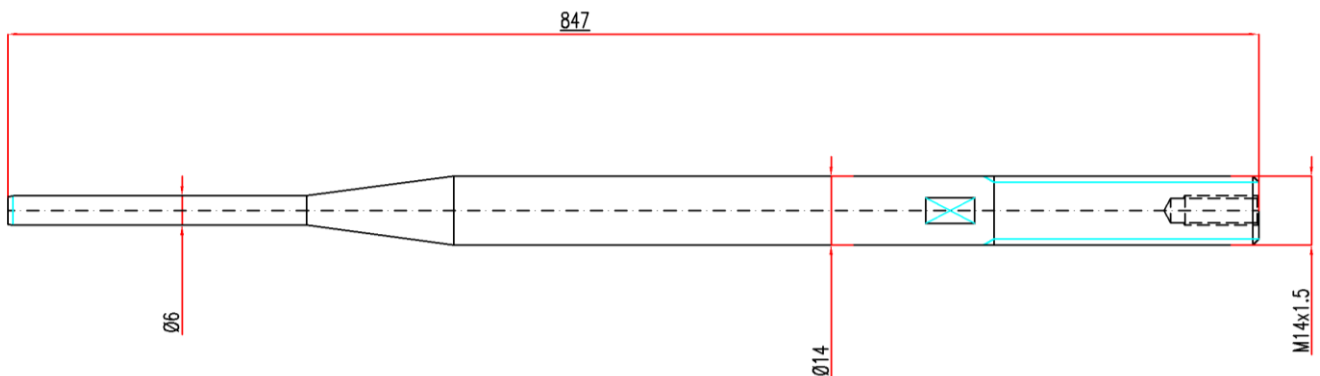
Codice	Materiale
TG 2-785-32-719-0	

**PARTICOLARI SPINA**

Pos.	Codice	Codice Macchina	Descrizione	Materiale	qta
1		TG 1-786-32-454-0	PEZZO INTERMEDIO		
2		TG 1-786-32-455-0	DISPOSITIVO PER IL CENTRAGGIO		
3		TG 1-786-32-321-1	ELEMENTO DI COMMUTAZIONE		
4		TG 1-786-32-318-1	SPINA		
5		TG 1-786-32-557-0	SUPPORTO / MONTAGGIO		
6		TG 0-724-51-432-1	SPINA		
7		TG 1-786-32-319-0	RUOTA PER CATENA		
8		TG 0-900-01-750-6	BOCCOLA		
9		TG 1-099-04-774-0	MOLLA DI PRESSIONE		
10		TG 0-681-72-806-2	ANELLO DI SICUREZZA		
11		TG 0-681-94-708-1	ROSETTA ELASTICA		
12		TG 0-681-73-306-1	ROSETTA ELASTICA		
13			ANELLO DI SICUREZZA		
14		TG 0-405-00-205-0	CUSCINETTO A SFERE		
15		TG 0-400-30-864-1	CUSCINETTO A SFERE		
16		TG 0-681-72-806-2	ANELLO DI SICUREZZA		

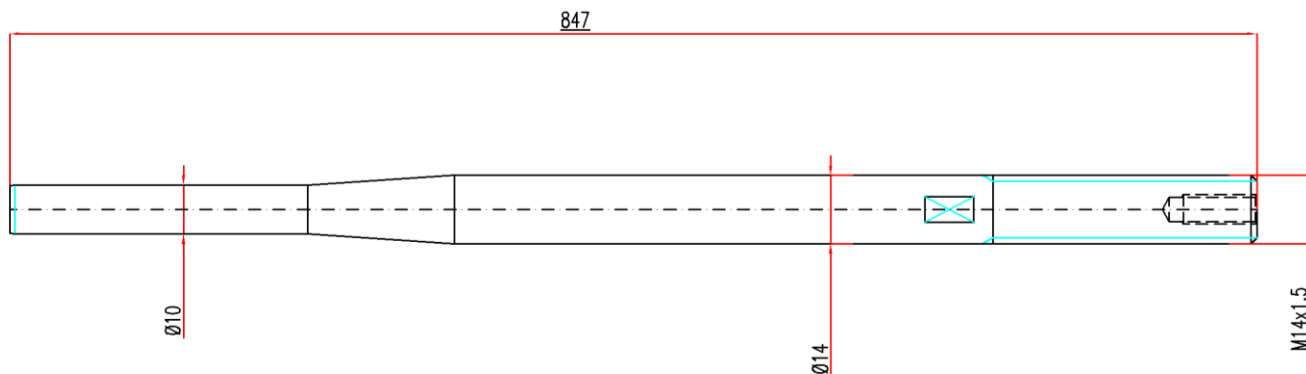
**M1188 - ASTA DI STIRO**

Descrizione	Codice	Materiale
ASTA DI STIRO PER BOTT. lt 0.5	TG 0-902-097-903	ACCIAIO CROMATO

**M1462 - ASTA DI STIRO bott. 0,5 Lt**

Descrizione	Materiale
ASTA DI STIRO	ACCIAIO CROMATO

**M1463 - ASTA DI STIRO bott. 1,5 Lt**

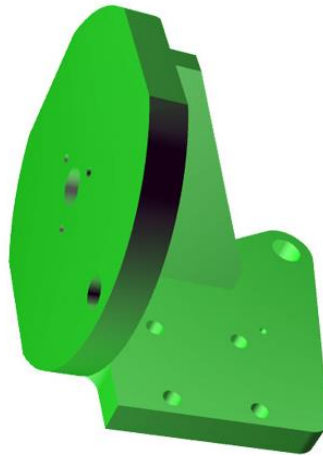


Descrizione	Materiale
ASTA DI STIRO	ACCIAIO CROMATO

**SUPPORTO STAMPO**

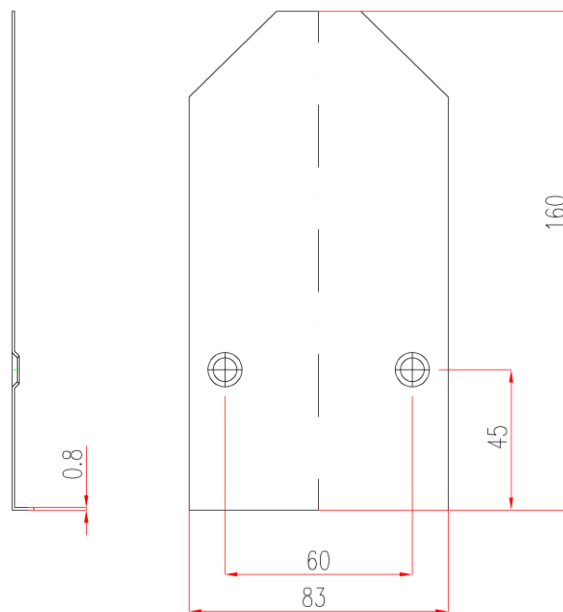


**SUPPORTO STAMPO**

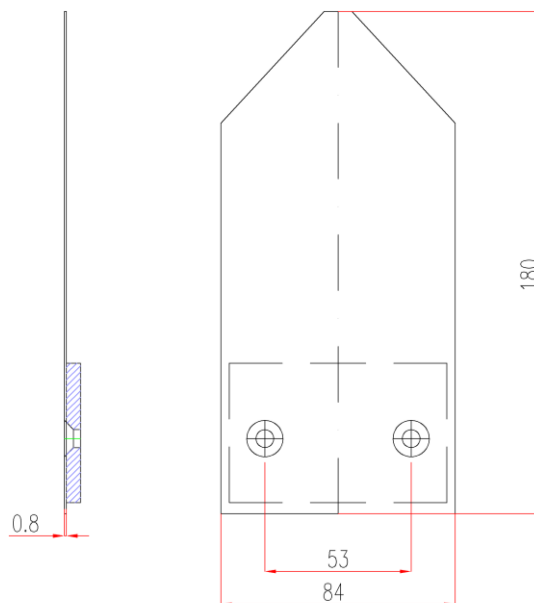




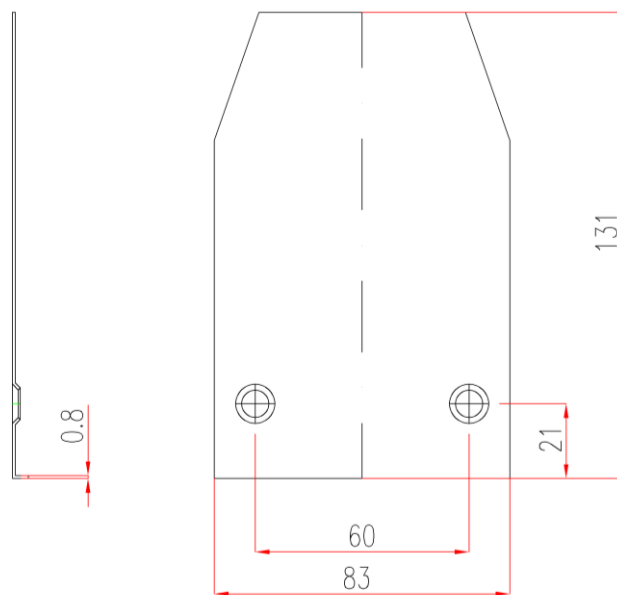


**M151 - LAMELLA**

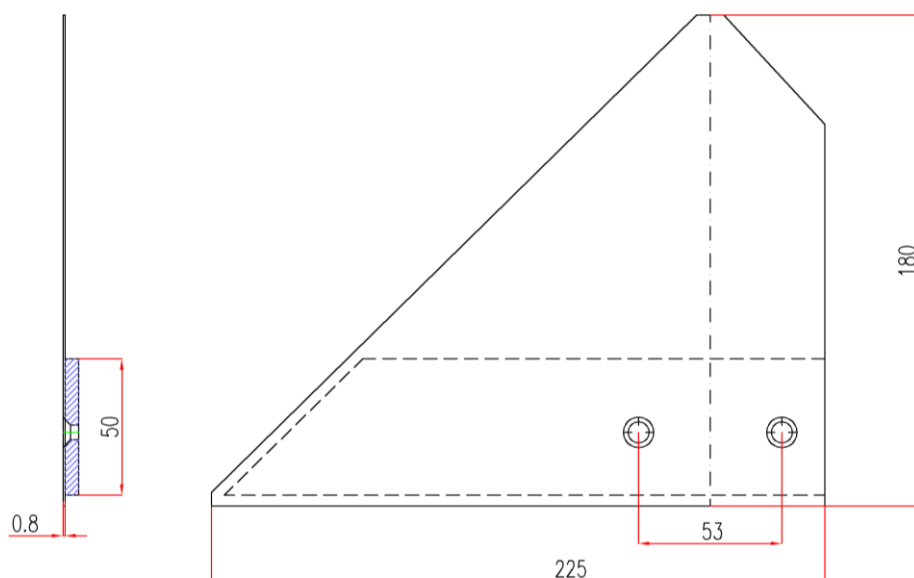
Descrizione	Materiale
LAMELLA DI PASSAGGIO	AISI 304

**M151-1 - LAMELLA DI PASSAGGIO**

Descrizione	Materiale
LAMELLA DI PASSAGGIO	AISI 304

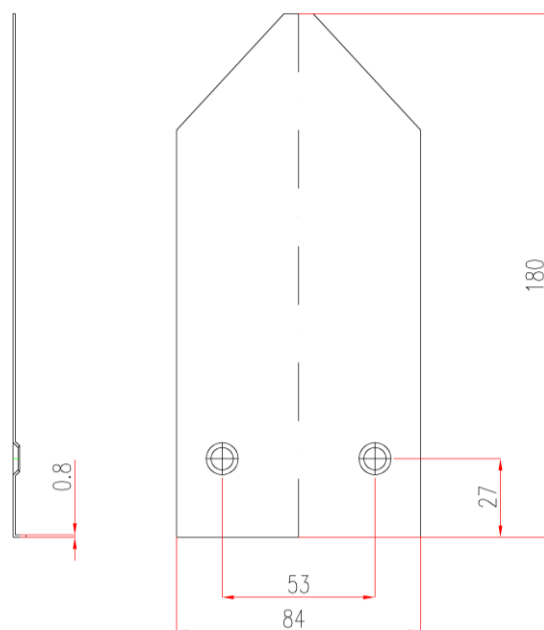
**M160 - LAMELLA**

Descrizione	Materiale
LAMELLA DI PASSAGGIO	AISI 304

**M160-1 - LAMELLA**

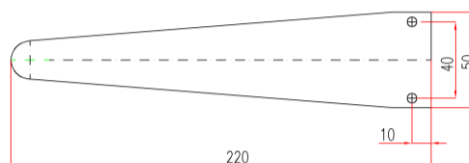
Descrizione	Materiale
LAMELLA DI PASSAGGIO	AISI 304

**M160-2 - LAMELLA**

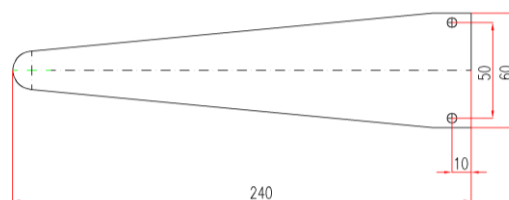


Descrizione	Materiale
LAMELLA DI PASSAGGIO	AISI 304

**M1117 - LAMELLA**



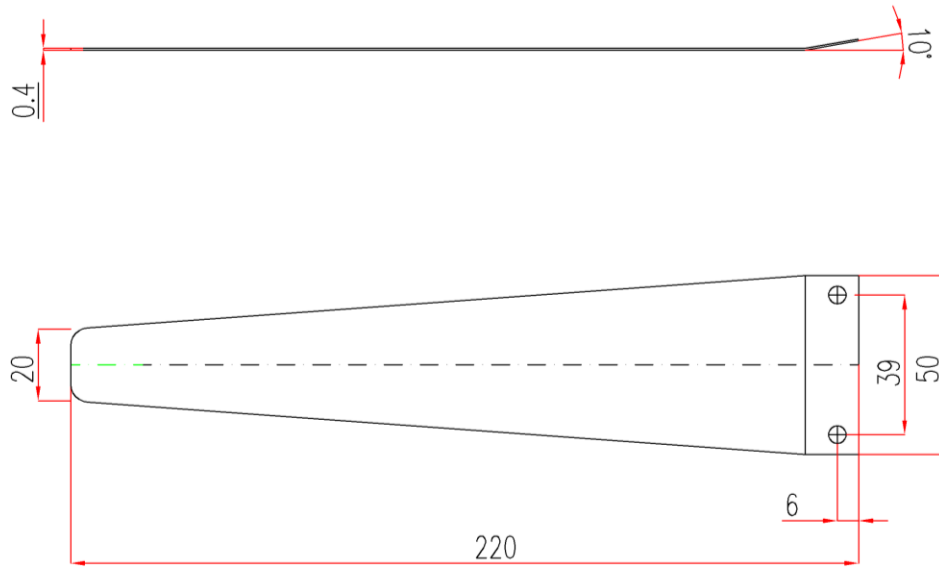
LAMELLA TIPO A



LAMELLA TIPO B

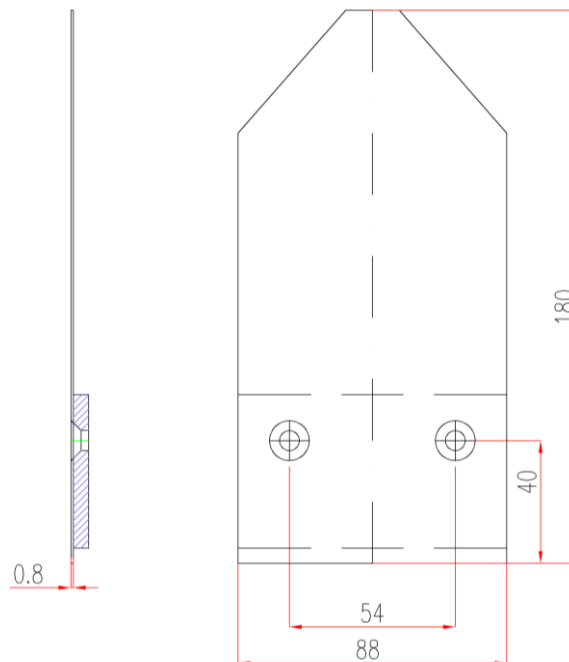
Descrizione	Materiale
LAMELLA CENTRATORE CARTONI	INOX ARMONICO sp=0,4 – 0,5

**M1118 - LAMELLA**



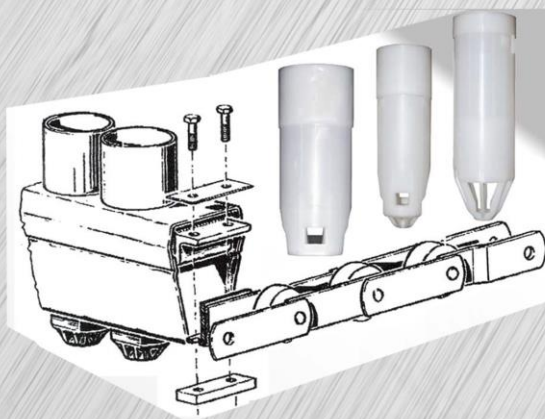
Descrizione	Materiale
LAMELLA CENTRATORE CARTONI	INOX ARMONICO

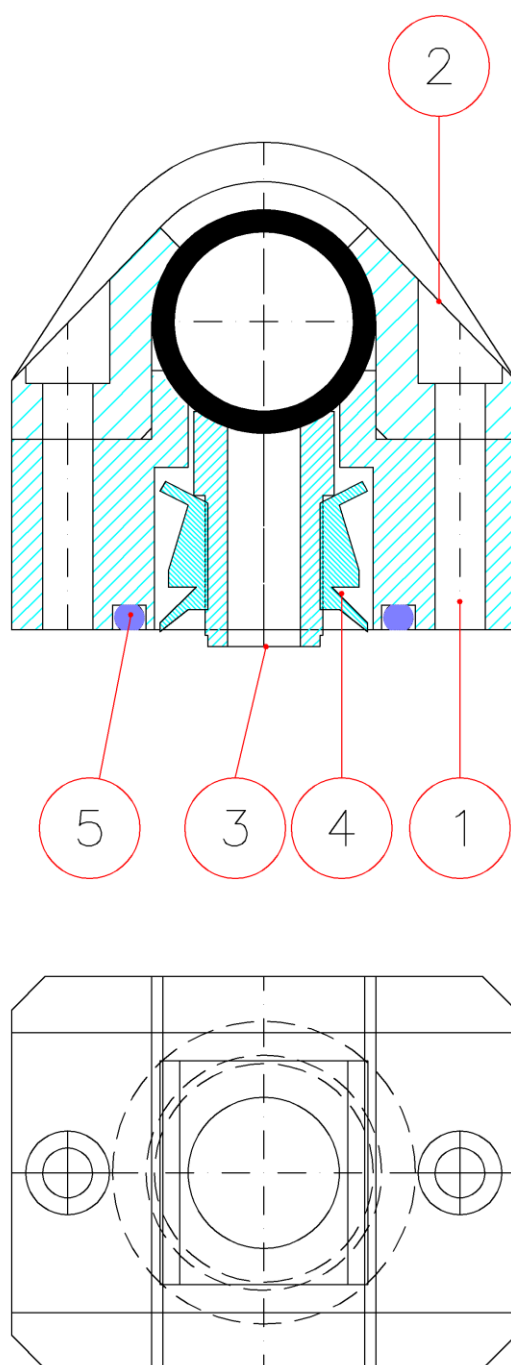
**M1437 - LAMELLA**



Descrizione	Materiale
LAMELLA DI PASSAGGIO	AISI 304

## Parte VI



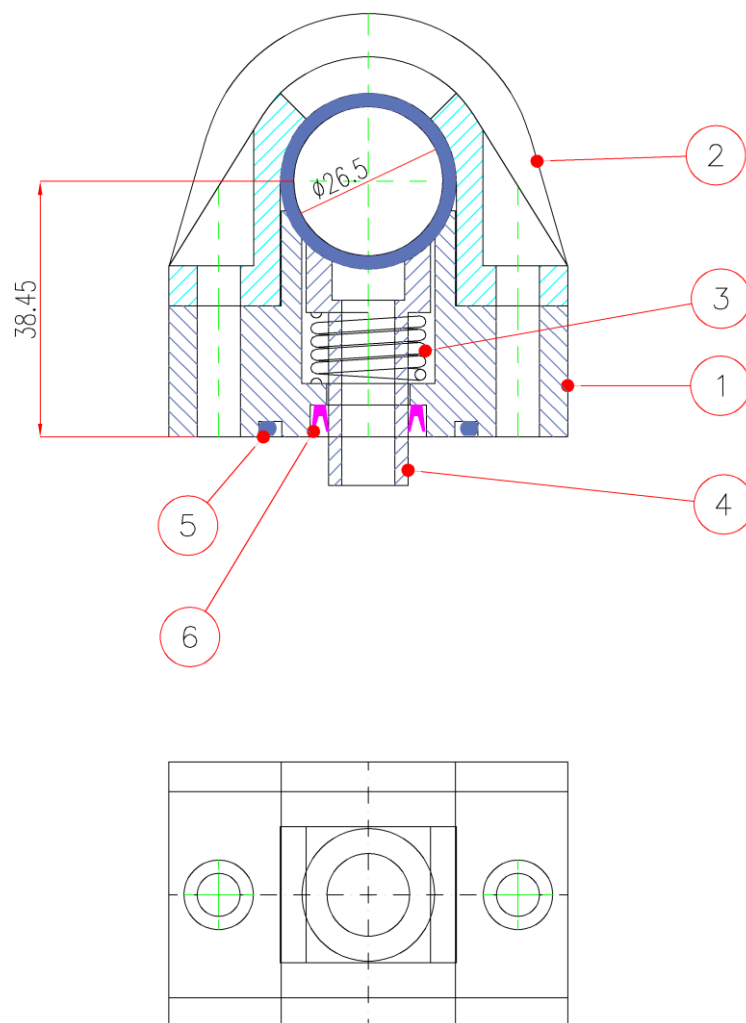
**C021 - SUPPORTO SPRUZZO ROTANTE**

Pos.	Codice	Descrizione	Materiale	qta
1	M388	BASE GIUNTO		1
2	M393	COPERCHIO GIUNTO		1
3	M394	STELO GIUNTO		1
4	M395	GUARNIZIONE GIUNTO		1
5		OR 3081	NBR	1

**CESTELLI**



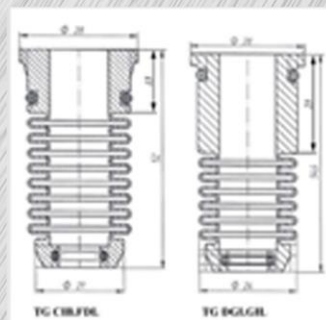
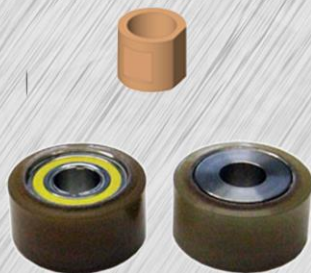
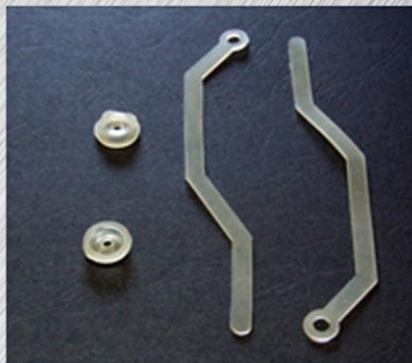
Pos.	Descrizione	Codice
1	M1464	TG 0-248-002-0
2		
3		

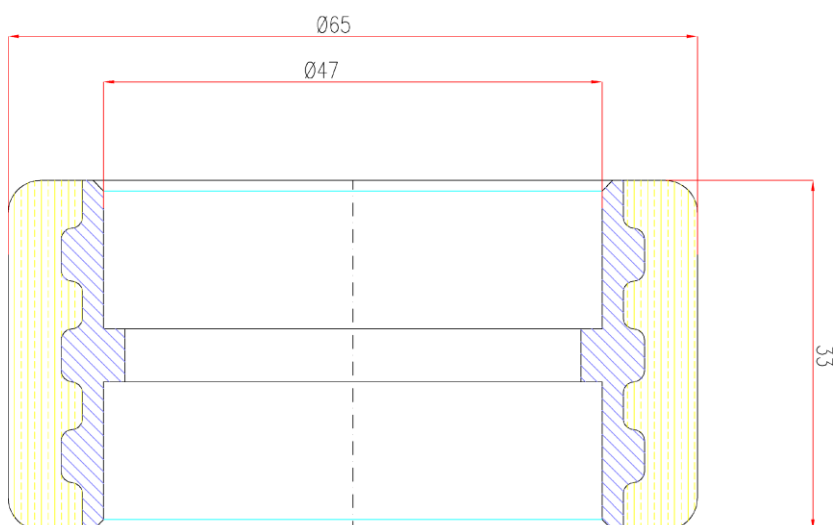
**C039 - SUPPORTO SPRUZZO ROTANTE**

Pos.	Codice	Descrizione	qta
1	M569	BASE GIUNTO	1
2	M570	COPERCHIO GIUNTO	1
3	M769	MOLLA	1
4	M776	STELO INTERNO GIUNTO	1
5	OR 3112	GUARNIZIONE	1
6	UM 12-17-4	GUARNIZIONE	1

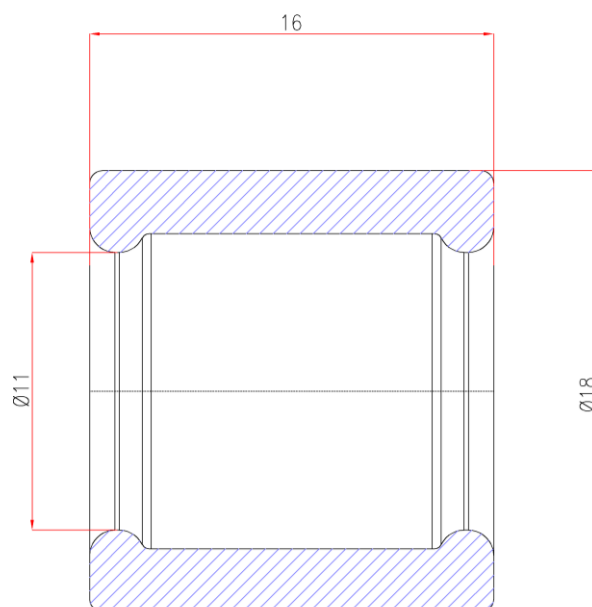


## Parte VII

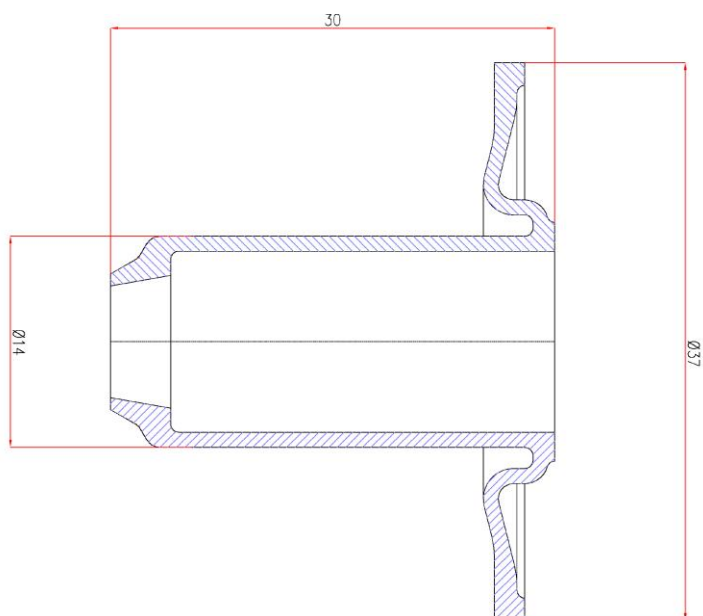


**M1055 - RULLO**

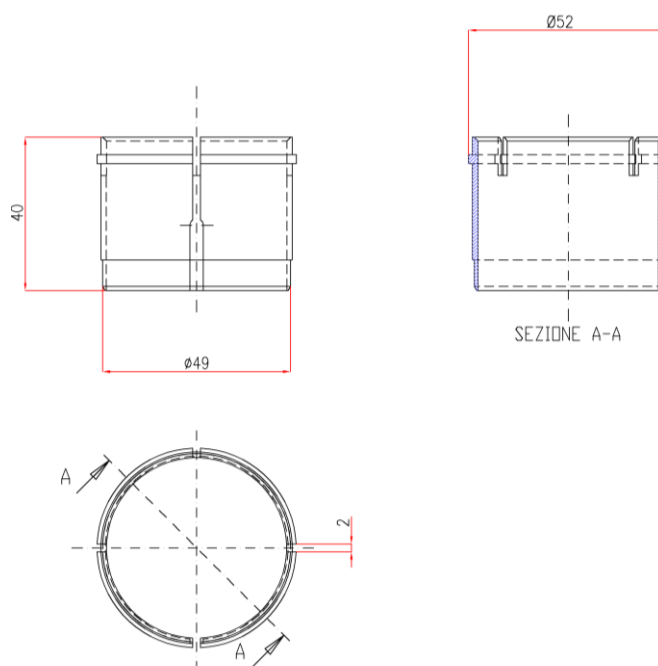
Descrizione	Materiale
RULLO	AISI 304

**M3012-2 - MANICOTTO**

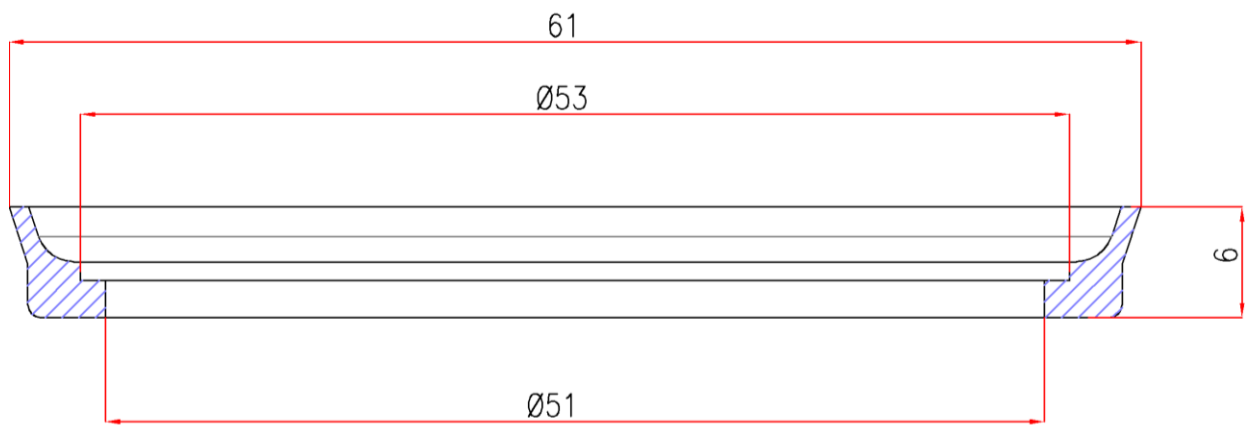
Descrizione	Materiale
MANICOTTO	HPU 95SH ROSSO

**M3014 - MEMBRANA**

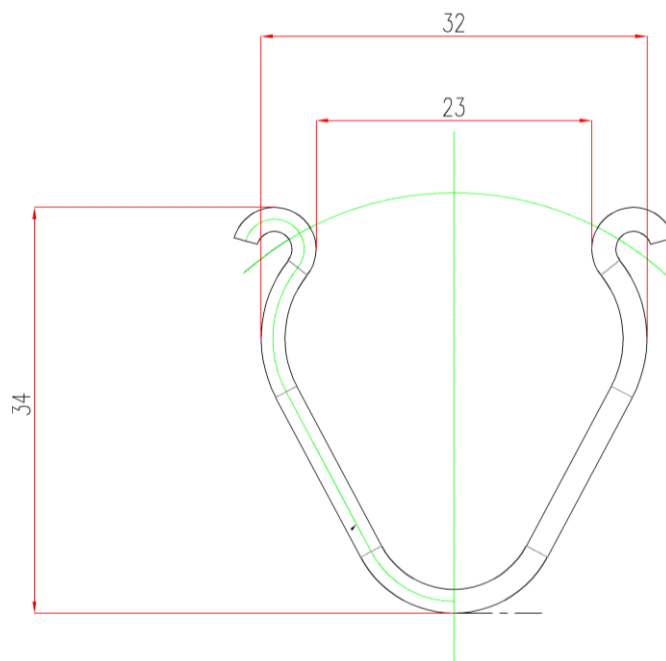
Descrizione	Materiale
MEMBRANA	GMS 70-75 SH NERO

**M3016 - CANOTTO ANTIFRIZIONE**

Descrizione	Materiale
CANOTTO ANTIFRIZIONE	PVDF

**M3017 - COLLARE**

Descrizione	Materiale
COLLARE	HPU 95 SH ROSSO

**M3021 - MOLLA**

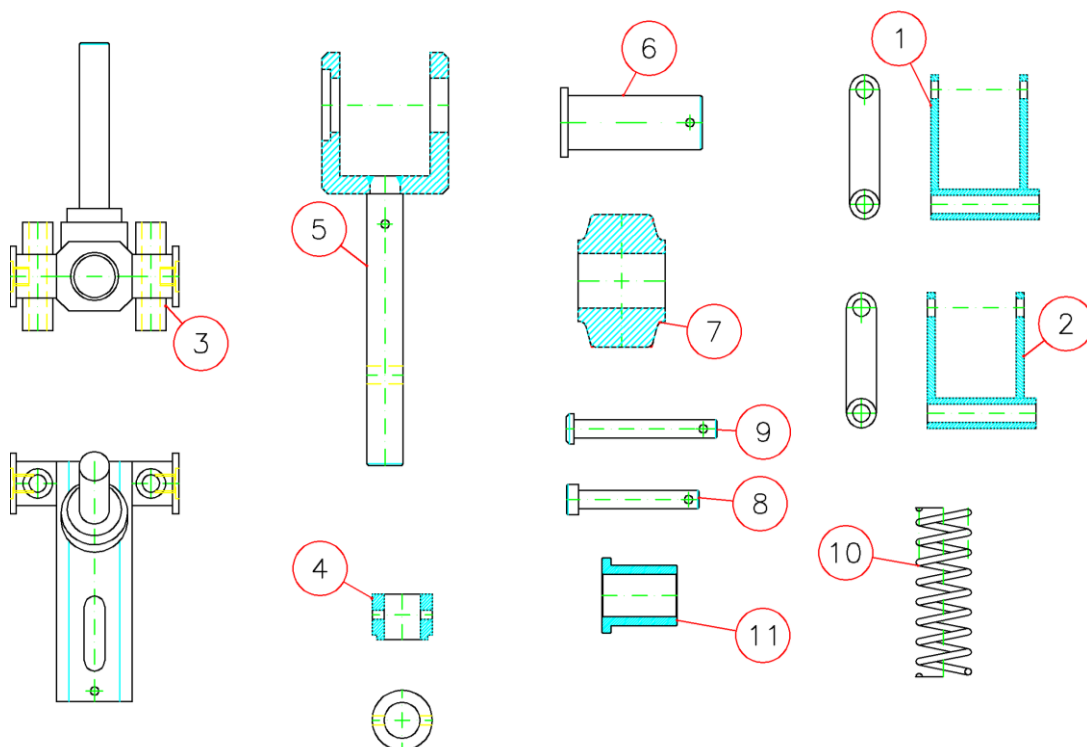
Descrizione	Materiale
MOLLA	INOX



## Parte VIII

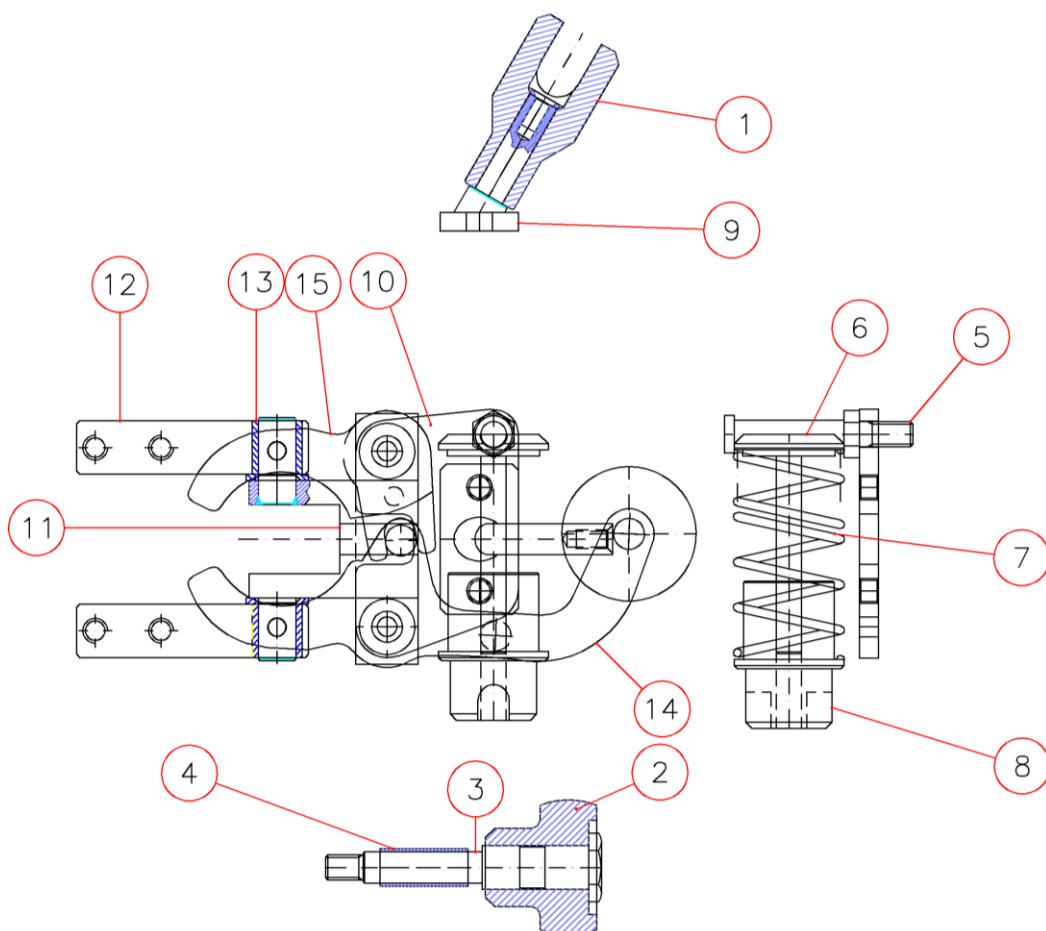


**C033 - GRUPPO PINZA**



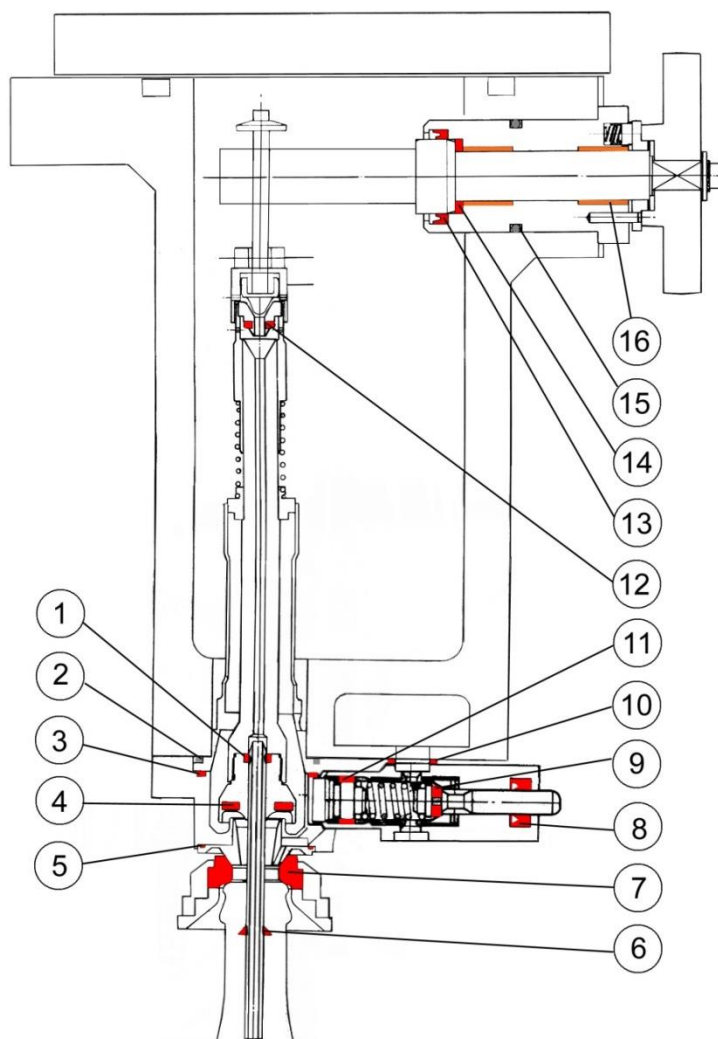
Pos.	Codice	Descrizione	Materiale	qta
1	M137	BRACCI MOBILI	AISI 304	1
2	M138	BRACCI MOBILI	AISI 304	1
3	M139	SUPPORTO PINZA	AISI 304	1
4	M141	BOCCOLA SUPERIORE	POLIZENE	1
5	M142	STELO	AISI 304	1
6	M143	PERNO	AISI 304	1
7	M144	RUOTA	POLIZENE	1
8	M145	SPINOTTO CENTRALE	AISI 304	1
9	M146	PERNO LATERALE	AISI 304	1
10	M704	MOLLA	AISI 304	1
11	-	BOCCOLA		1

**C052 - PINZA SCIACQUATRICE**



Pos.	Codice	Descrizione	qta
1	M1044	FORCELLA	1
2	M1045	ROTELLA	1
3	M1046	PERNO	1
4	M1047	DISTANZIARE	1
5	M1048	PERNO	1
6	M1049	PERNO	1
7	M1050	MOLLA	1
8	M1051	GUIDA	1
9	M1052	SUPPORTO	1
10	M1053	PIASTRINA LATERALE	1
11	M1054	CORPO	1
12	M1062	PIATTO	2
13	M1063	BOCCOLA	2
14	M1059	MANINA	1
15	M1060	MANINA	1

**KIT RUBINETTO VE**



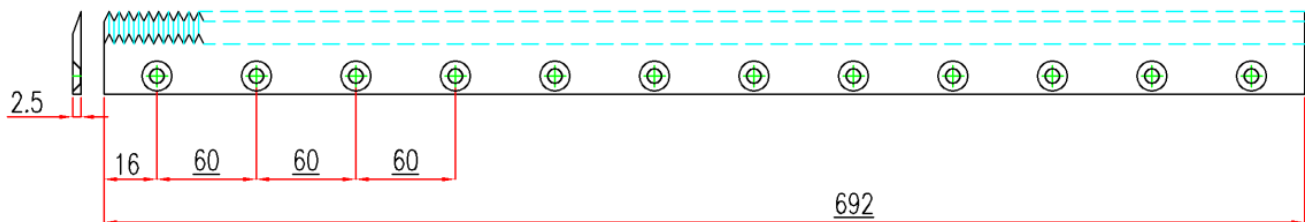
Pos.	Codice	Descrizione	Materiale originale	Materiale nuova generazione	qta
1	TGGBX102	OR PARKER 2.107			1
2	TGGAF150	ANELLO OR			1
3	TGGAL162	ANELLO OR			1
4	TGGEA583	VALVOLA TENUTA LIQUIDO			1
5	TGGBV030	ANELLO OR			1
6	TGGEA561	DEFLETTORE			1
7	TGGEA547	GOMMA DI TENUTA			1
8	TGGDI031	GUARNIZIONE			1
9	TGGEA521	GUARNIZIONE			1
10	TGGAF117	ANELLO OR			1
11	TGBWW526	MOLLA			1
12	TGGEA523	GUARNIZIONE			1
13	TGGDI118	GUARNIZIONE		HPU	1
14	TG102996	RONDELLA			1
15	TGGAM150	ANELLO OR			1
16	TGVCB355	BOCCOLA			2



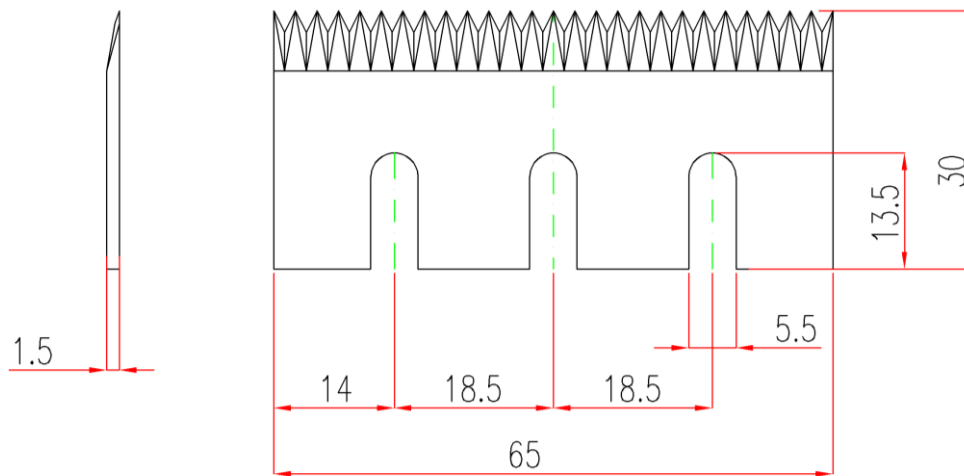
**STELLA DI COMANDO**



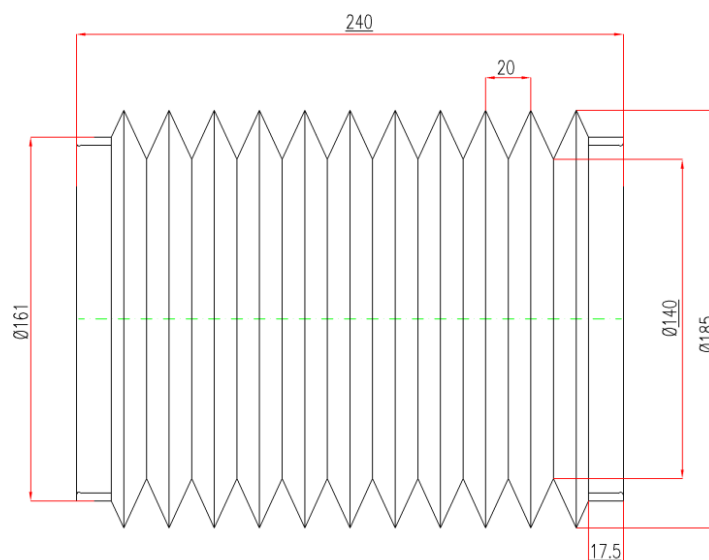
**M116 - LAMA**



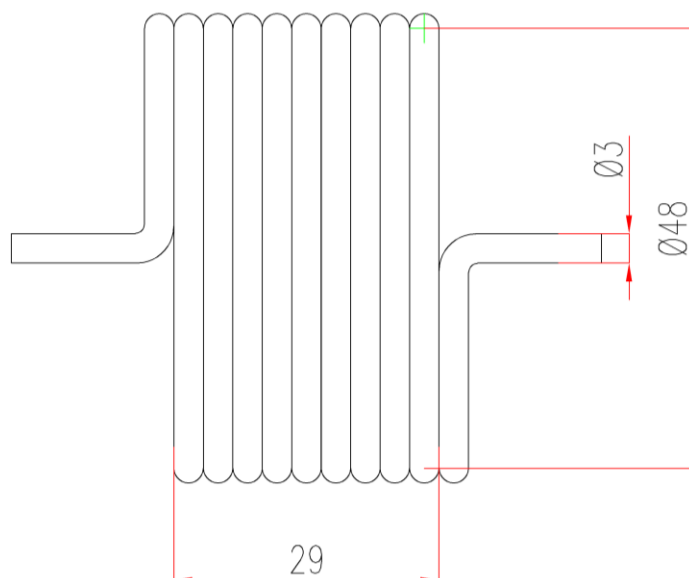
Descrizione	Materiale
LAMA TERMORETRAIBILE	ACCIAIO

**M128 - LAMA**

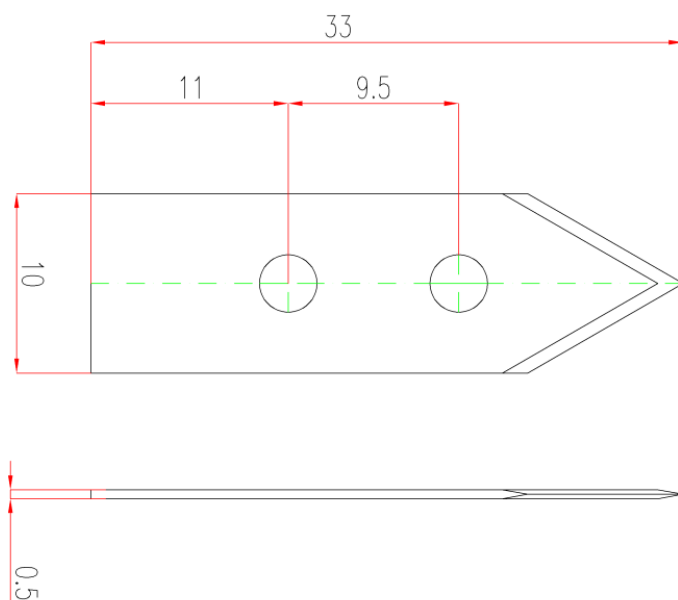
Descrizione	Materiale
LAMA NASTRATICI	ACCIAIO

**M332 - SOFFIETTO**

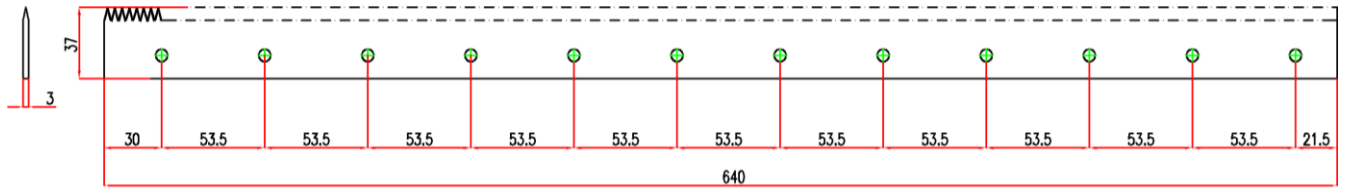


**M799 - MOLLA**

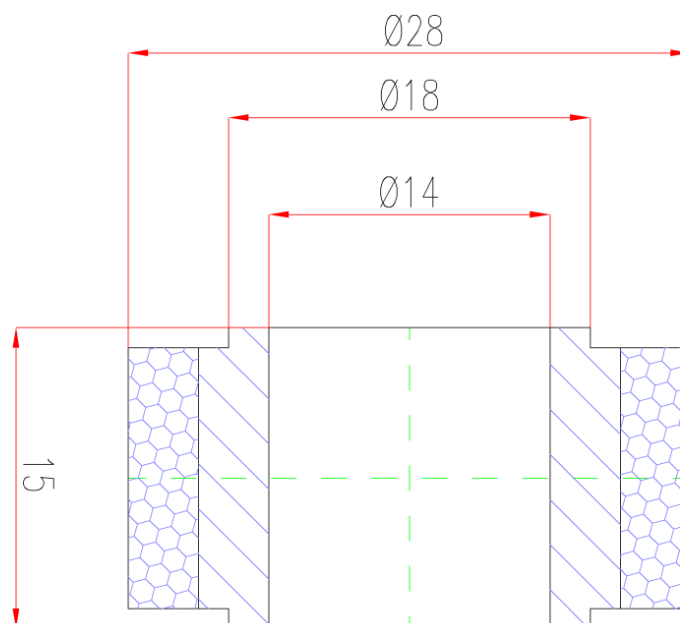
Descrizione	Materiale
MOLLA A TORSIONE	INOX

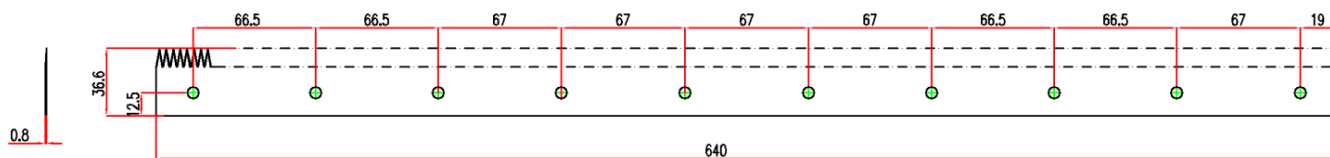
**M922 - CUTTER**

Descrizione	Materiale
CUTTER TAGLIO FILM TERMORETRAIBILE	ACCIAIO

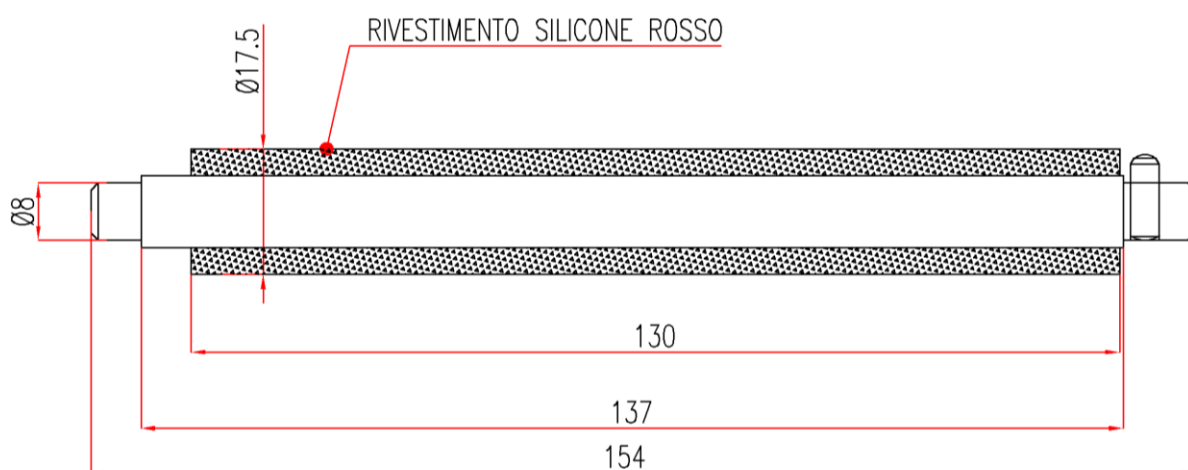
**M923 - LAMA**

Descrizione	Materiale
LAMA TAGLIO FILM	ACCIAIO

**M980 - RULLO ETICHETTATRICE**

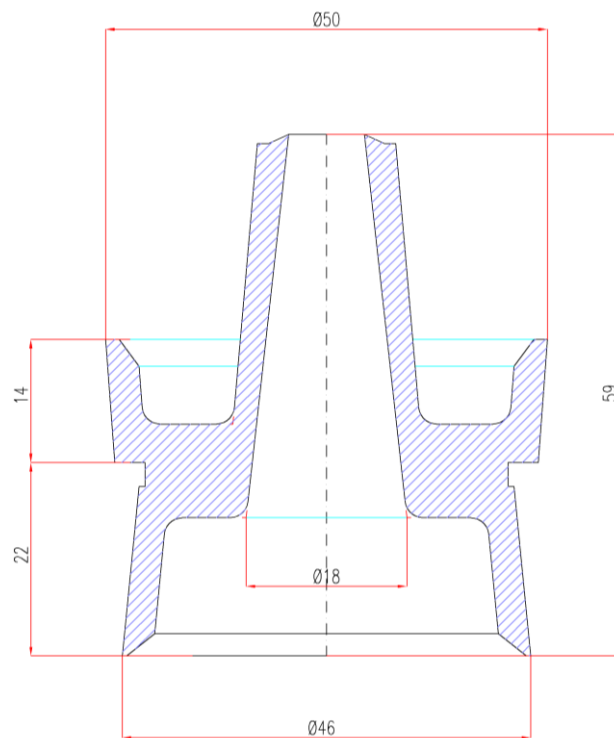
**M992 - LAMA**

Descrizione	Materiale
LAMA TAGLIO FILM	ACCIAIO

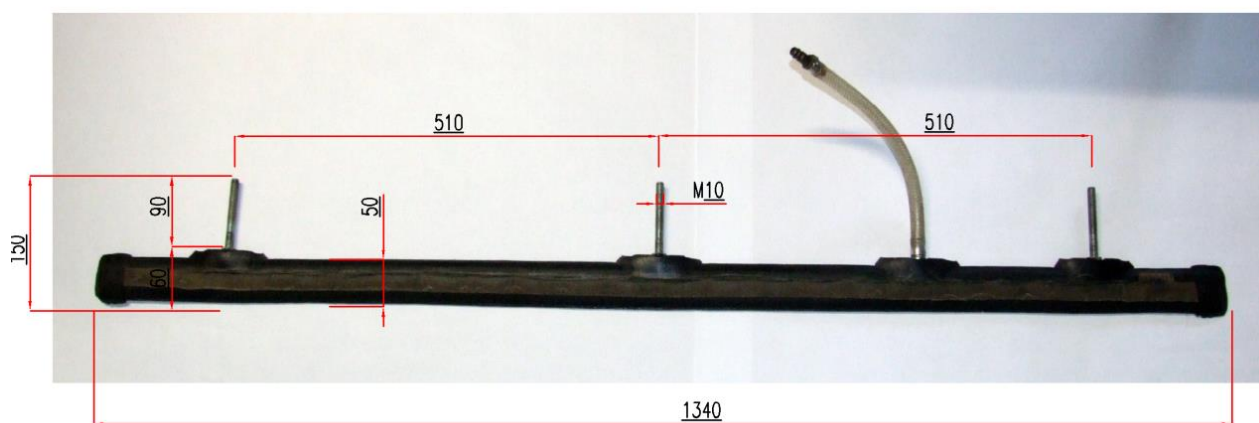
**M1025 - RULLO**

Descrizione	Codice	Materiale
RULLO STIRAETICHETTE	TG57ROL202	AISI 304 + SILICONE

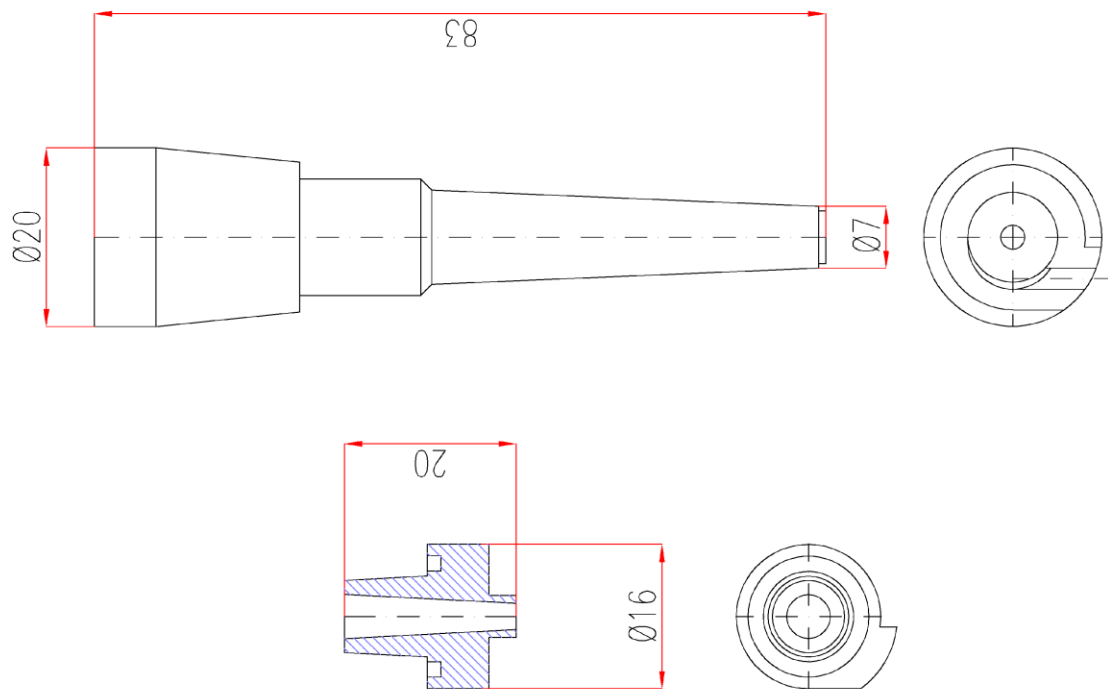
**M1107 - GUARNIZIONE PISTONE**



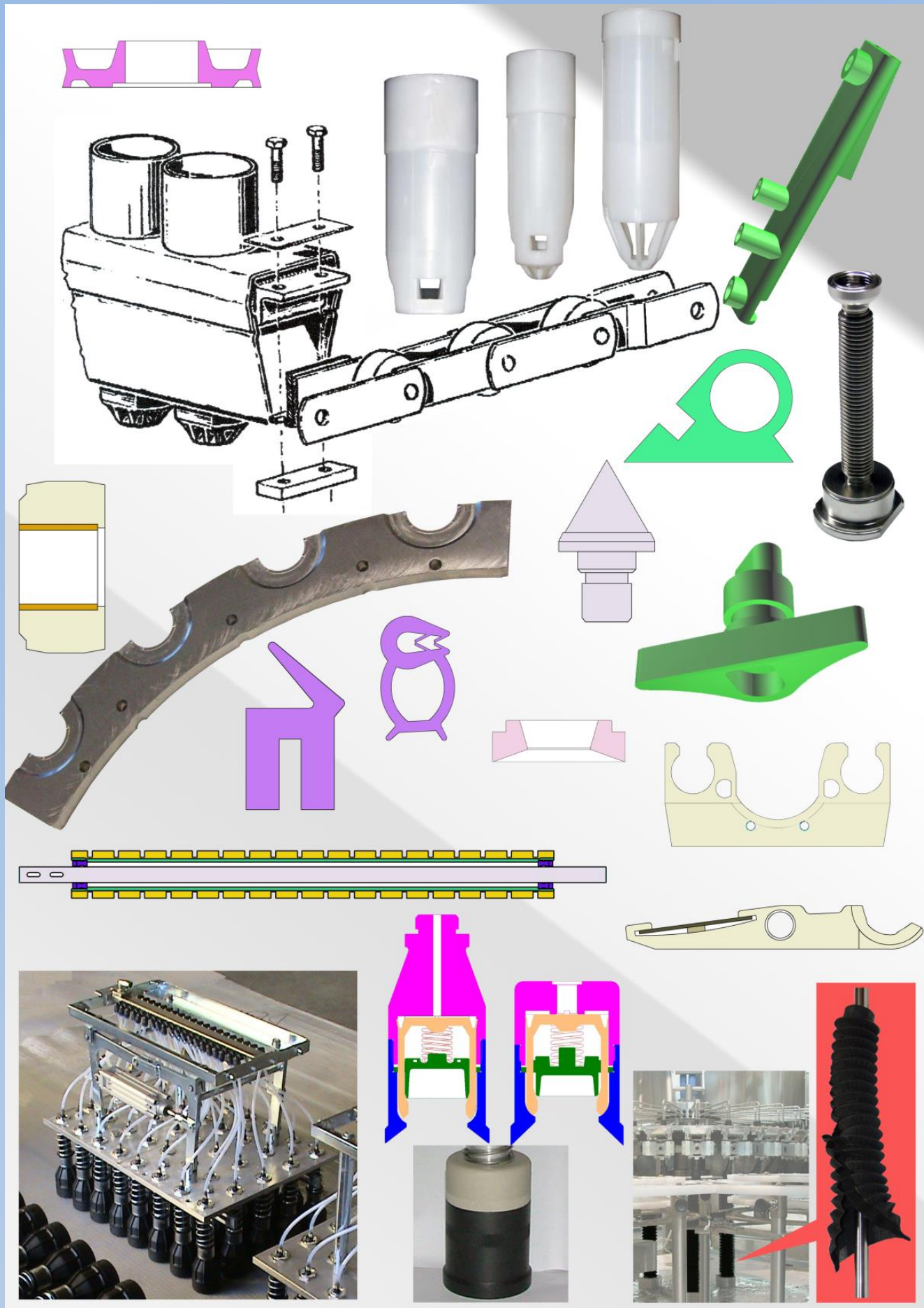
**M1229 - TUBO GONFIABILE PER DEPALETTIZZATORI**



**M1276 - UGELLO FILTRO**







Via Don Sibilloni , 20A - 43040 Felegara (PR) - Italy

Tel. e Fax +39.0525.432088

<http://www.tecnogor.it> e-mail: [info@tecnogor.it](mailto:info@tecnogor.it)